

Operating constructions for PK 1023..., PW 1023-... with galvanic isolation



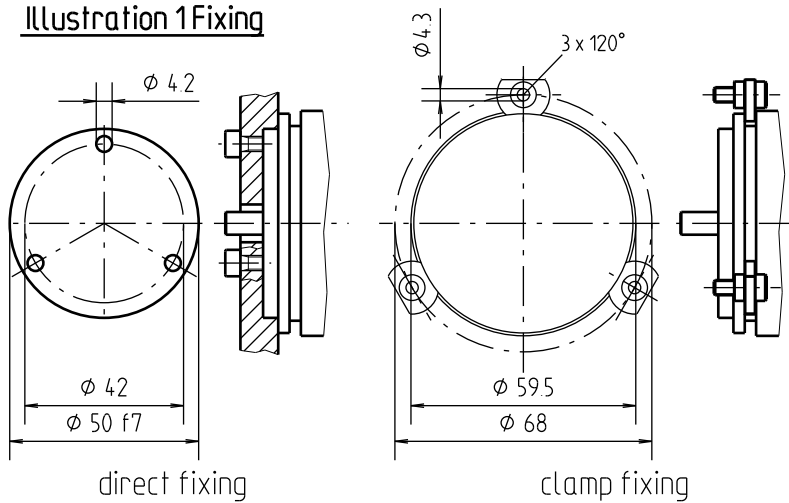
25.10.2010
11.02.2009

0010647
0008312

B

A

Illustration 1 Fixing



1. Attachment and centering according to illustration 1.
2. Wiring possibilities and measurement range please look illustration 2.
3. Driving mechanics is to drive to initial position.
4. Connect transducer with aid of coupler with driving mechanics.
5. Zero point adjustment
Adjust the zero point range through turning of the transmitter housing.
Zero point will be signaled through lighting of the diode.
ATTENTION!
Luminous diode only signalizes the zero point range, electrical zero point determine through examination of the output signal.
Transmitter is to tighten and the output signal with the zero point trimmer is to adjust to 0 or 4 mA.
Zero point trimmer and steepnes trimmer respectively after removal of the protective screw (illustration 3) accessible.
6. End-angle adjustment
Driving mechanics is to drive to 100% position and to adjust with the steepness trimmer to 20 mA.
7. Initial position and final position are to controll and if necessary, you have to iterate the alignment.
8. Protective screws are to fix.

Illustration 2

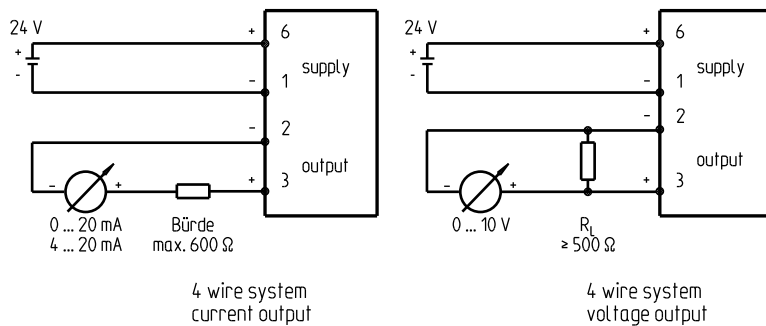


Illustration 3

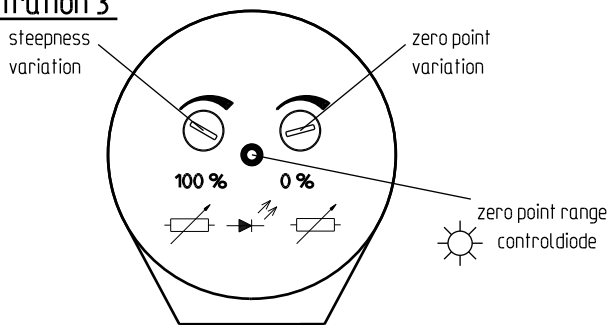
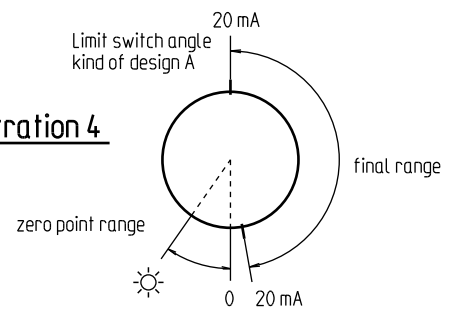
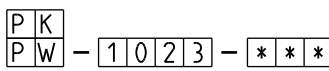


Illustration 4



Type key:



Variant - No. *
Casing - synchro - size
Shaft diameter
Device group

*)Variant-No. will be determined through addition of the single figures.

0	1	2 (3/4) wire system current, 4...20 mA, without galv. isolation
0	2	3/4 wire system current, 0/4...20 mA, without galv. isolation
0	3	4 wire system current, 0/4...20 mA, with galv. isolation
0	4	4 wire system current, ± 20 mA, with galv. isolation
0	5	3/4 wire system voltage, 0...10 V, without galv. isolation
0	6	4 wire system voltage, 0...10 V with galv. isolation
0	7	4 wire system voltage, ± 10 V, with galv. isolation
0	0	clockwise direction of rotation
1	6	clockwise direction of rotation
0	0	continuous rotation
3	2	stops
0	0	circular connector (angeled)
6	4	circular connector (straight)
1	2	8 cable connection
2	5	6 spring release (for Rope Length Transmitter)

*** - The variant no. will be determined by addition of the individual numbers.

Diese Unterlage ist unser Eigentum
Jede Vervielfältigung, Verwertung oder Mitteilung an dritte Personen
oder Konkurrenzfirmen ist strafbar und wird gerichtlich verfolgt.
(Urheberrechtsgesetz, Gesetz gegen unfaire Wettbewerbspraktiken B.G.B.),
FERNSTEUERGERÄTE Kurt Oelsch GmbH

5710Z02-BA:02E

2010	Datum	Name	Maßstab
gez.	25.10.	RODE	--
gepr.	25.10.2010	BAUM	
Ursprung	23.08.04	Butuf/Sta.	

5710Z106