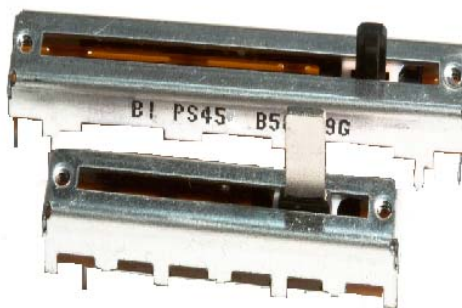


Model PSxx  
 Slide Potentiometer  
 100,000 Cycle Life  
 Metal/Plastic Lever  
 RoHS Compliant



#### MODEL STYLE

Single Gang	PSxx-1
Dual Gang	PSxx-2

#### ELECTRICAL<sup>1</sup>

Resistance Range, Ohms	500 -1M
Standard Resistance Tolerance	± 20%
Resistance Tapers	A,B,C
Residual Resistance	Terminals 1 to 2:Less than 10 ohms Terminals 2 to 3:Less than 30 ohms
Input Voltage, Maximum	Linear B taper: 200 Vac    Other tapers: 150 Vac
Power rating, Watts (Single Unit / Dual Unit)	<b>Linear B taper:</b> 20mm: 0.1W / 0.05W, 30mm: 0.2W / 0.1W 45mm: 0.25W / 0.125W, 60mm:0.2W / 0.2W  <b>Other tapers:</b> 20mm: 0.05W / 0.025W, 30mm: 0.1W / 0.05W 45mm: 0.125W / 0.06W, 60mm:0.1W / 0.1W
Dielectric Strength	300Vac, 1 minute
Insulation Resistance, Minimum	100M ohms at 250Vdc/ 1 minute
Sliding Noise	Less than 100mV
Gang Error	±3dB (-40dB to 0dB)

#### MECHANICAL

Static Stop Strength, Minimum	5.0 Kgf/cm
Operating Force	10gf to 100gf
Detent Slip-out force	30gf to 200gf

#### DURABILITY

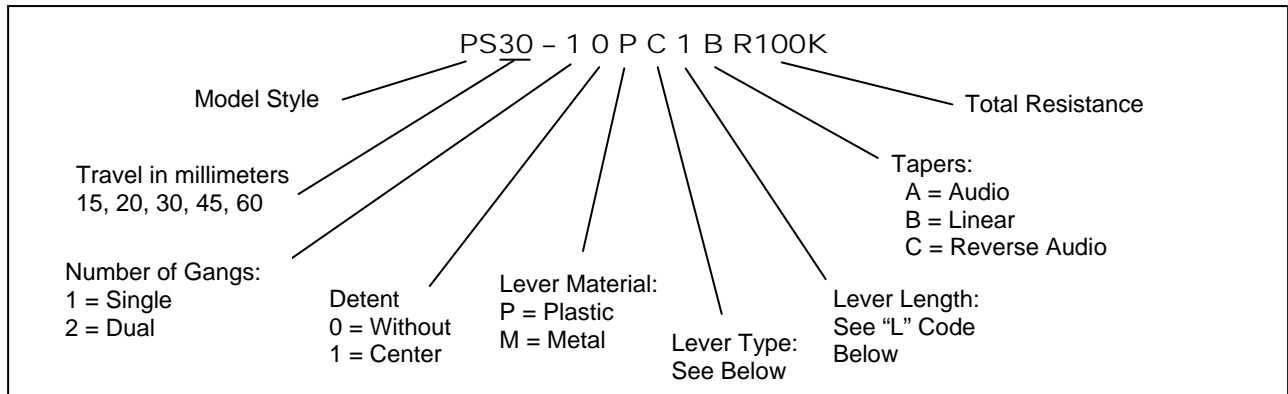
Sliding Life	100,000 cycles
--------------	----------------

<sup>1</sup> Specifications subject to change without notice.

# Model PSxx

## ORDERING INFORMATION<sup>2</sup>

### Model PSxx



## STANDARD RESISTANCE VALUES, OHMS

500	1K	2K	5K	10K	20K	50K	100K	200K	500K	1 MEG
-----	----	----	----	-----	-----	-----	------	------	------	-------

### Plastic Lever Types

D-Type	B-Type	C-Type	A-Type
L 5	L 10	L 10 12.5 15 18 20	L 5 8 10
CODE 1	CODE 1	CODE 1 2 3 4 5	CODE 1 2 3

### Metal Lever Types

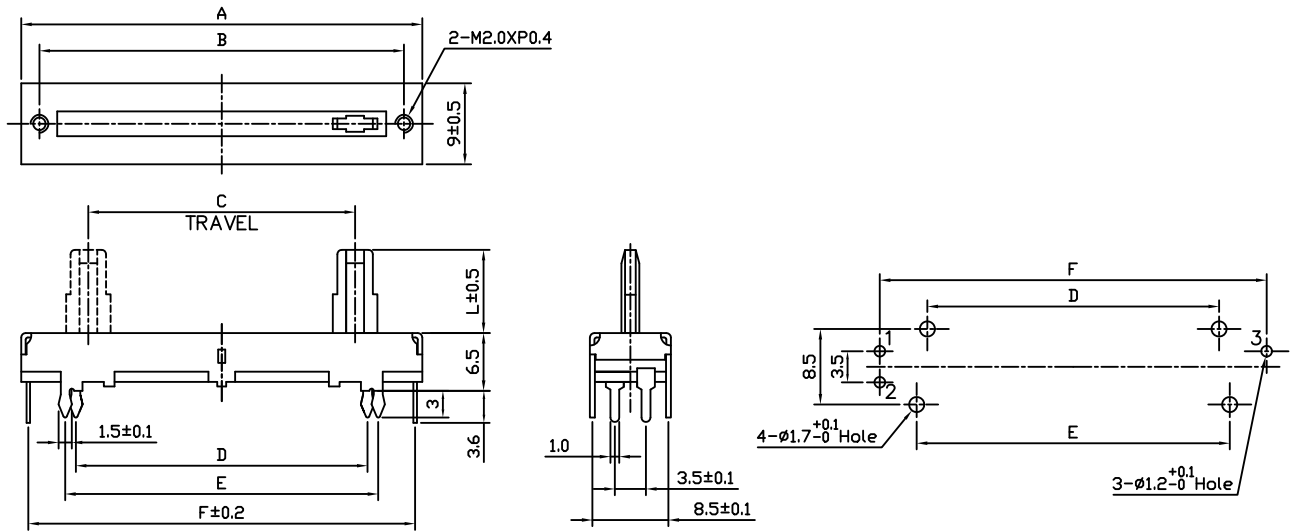
D-Type	B-Type	C-Type	A-Type
L 15 20 25 F 10 10 10	L 6 7 10	L 10 15 17.3 20 25 F 7 10 10 10 10	L 10.4
CODE 1 2 3	CODE 1 2 3	CODE 1 2 3 4 5	CODE 1

<sup>2</sup> Contact our customer service for custom designs and features.

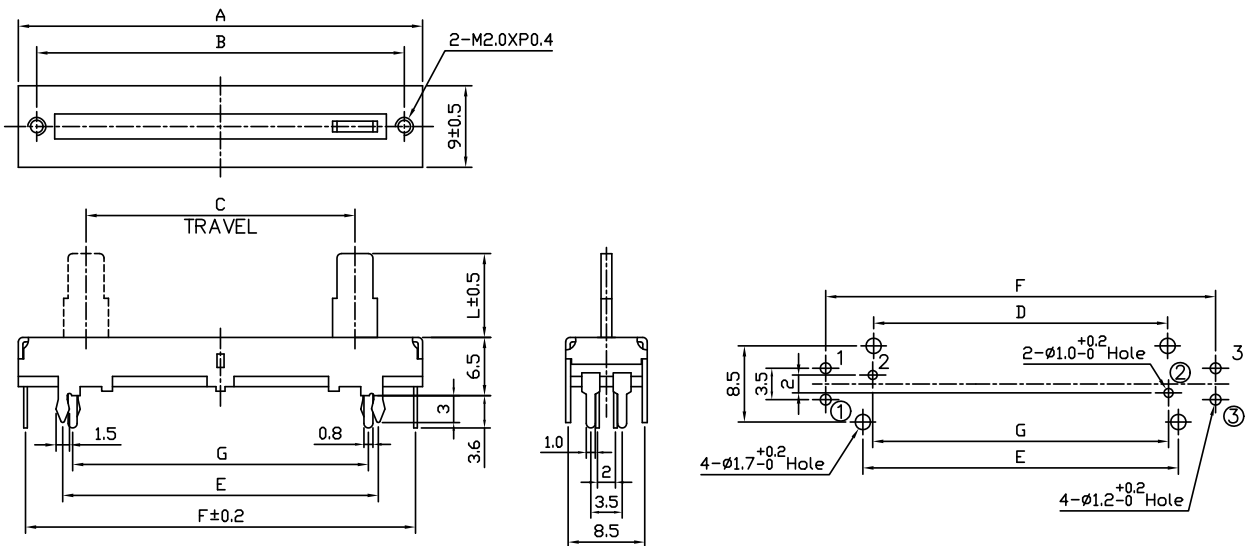
# Model PSxx

## OUTLINE DRAWING

### PSxx-1 Single Gang



### PSxx-2 Dual Gang

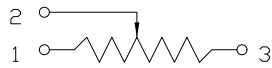


# Model PSxx

MODEL	A	B	C	D	E	F	G
PS15-1	30	26	15	17.8	20.2	28.8	---
PS15-2	30	26	15	17.8	20.2	28.8	18
PS20-1	35	31	20	22.8	25.2	33.8	---
PS20-2	35	31	20	22.8	25.2	33.8	23
PS30-1	45	41	30	32.8	35.2	43.8	---
PS30-2	45	41	30	32.8	35.2	43.8	33
PS45-1	60	56	45	47.8	50.2	58.8	---
PS45-2	60	56	45	47.8	50.2	58.8	48
PS60-1	75	71	60	62.8	65.2	73.8	---
PS60-2	75	71	60	62.8	65.2	73.8	63

## CIRCUIT DIAGRAM

**PSxx-1 Single Gang**



**PSxx-2 Dual Gang**

