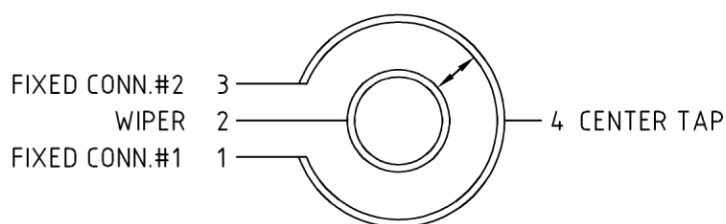


ELECTRICAL CONNECTIONS



BOTTOM VIEW

SPECIFICATIONS POTENTIOMETER P6530s0001

Make:	Novotechnik
Type:	P6530s0001
Part no:	54000005

MECHANICAL DATA

Dimensions:	Refer to page 1
Mounting:	servomount with 3 clamps (included)
Mechanical travel:	360° continuous
Permitted shaft load (axial and radial) static or dynamic force:	45 N
Torque:	$\leq 0,15 \text{ Ncm}$
Maximum operational speed:	10000 rpm
Weight:	80 g

ELECTRICAL DATA

Actual electrical travel:	355° ($\pm 2^\circ$)
Total resistance value:	2K0hm ($\pm 20\%$)
Repeatability:	0.002% (0.007°)
Independent linearity:	$\pm 0,1\%$
Max. permissible applied voltage	50 V
Center tap position:	$\pm 1\%$ ($\pm 1,75^\circ$)
Recommended operating wiper current:	<1uA
Maximum wiper current in case of malfunction:	10mA
Insulation resistance (500VDC, 1bar, 2s):	$\geq 10\text{M}\Omega$
Dielectric strenght (50Hz, 500VAC, 1bar, 2s):	$\leq 100\text{uA}$

ENVIRONMENTAL DATA

Operating temperature range:	-40°C/+100°C
Vibration:	5-2000Hz $a_{\max} = 0,75\text{mm}$ $a_{\max} = 20\text{g}$
Shock:	50g 11ms
Life:	$>100 \times 10^6 \text{ rev.}$
Protection class:	IP40 (DIN 400 50)