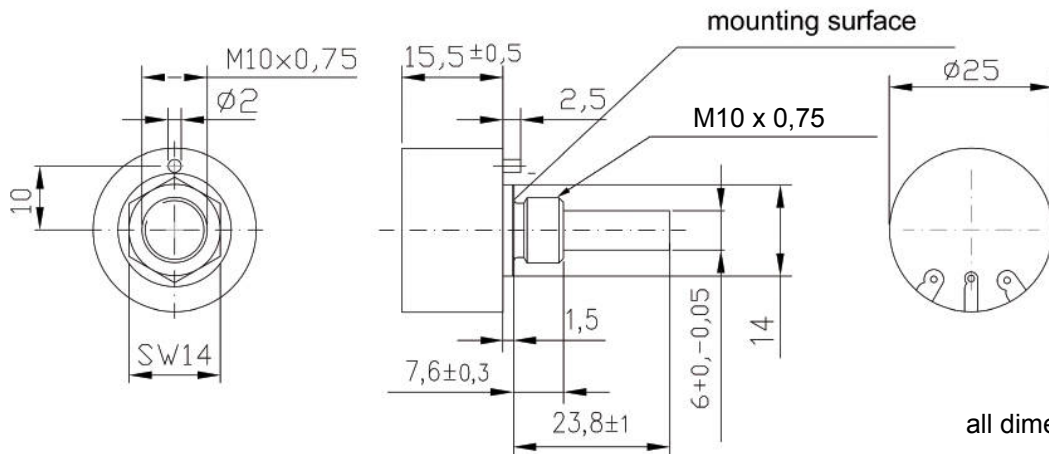


1" (25 mm) 1 Watt, Industrial Single Turn Potentiometer, Bushing Mount, Wirewound

- Wirewound, metric size
- Electrical angle 270°
- tactile feeling operating torque
- Standard resistance range 100Ω - 20kΩ



all dimensions in mm

ELECTRICAL CHARACTERISTICS

| | |
|-----------------------------------|--|
| Resistance element | Wirewound |
| Standard resistance values (Ω) | 100, 500, 1k, 2k, 5k, 10k |
| Standard resistance tolerance (%) | (typ. IEC 60393) ± 10 |
| Standard linearity tolerance (%) | (typ. IEC 60393) ± 1 |
| Type of linearity | Independent linearity |
| Power rating (+70°C) | 1 Watt |
| Electrical travel | 270° ± 5° (MUP1125) 270° ± 5° with endstops (MUP1100) |
| Insulation resistance | 1000 Mohm at 500 VDC |
| Dielectric strength | 500 VAC |
| Noise | <100 Ohm ENR |

RESOLUTION

| Value (Ω) | Turns | Resolution |
|-----------|-------|------------|
| 50 | 144 | 0,69 |
| 100 | 180 | 0,56 |
| 200 | 193 | 0,52 |
| 500 | 256 | 0,39 |
| 1k | 391 | 0,26 |
| 2k | 454 | 0,22 |
| 5k | 580 | 0,17 |
| 10k | 652 | 0,15 |
| 20k | 899 | 0,11 |

MECHANICAL CHARACTERISTICS

| | |
|-------------------------------------|--------------------------|
| Mechanical angle (MUP1125) | 360° ± continuous |
| Mechanical angle (MUP1100) | 285° ± with endstops |
| Torque starting (Ncm) | 1,5 |
| Torque running (Ncm) | 1 |
| Rotational life (shaft revolutions) | (typ. IEC 60393) 100.000 |
| Bearing type | sleeve |
| Operating temperature (°C) | -50°C to +85°C |

MATERIAL

| | |
|-----------|--------------------------------|
| Housing | glass filled thermoset plastic |
| Haft | brass, nickle plated |
| Terminals | phosphorbronze |
| Bushing | brass, nickle plated |

OPTIONS UPON REQUEST

| |
|--------------------------------------|
| Special resistance value |
| IP65 protection (IP65) |
| Special electrical angle of 300° (A) |
| Special shaft up to 30mm (S) |
| With output cable and connector (CC) |

Application: Semi - precision potentiometer for universal use. These medium life preset potentiometers offer several possibilities. With a good resolution and good rotational life are these components suitable for industrial applications.

ORDERING INFORMATION

| | | | | | |
|---------|-----|-----------|---------------|---------------|---------|
| MUP1125 | 10k | L5% | A300 | S30mm | IP65-CC |
| Typ | Ω | Linearity | Special Angle | Special Shaft | Options |