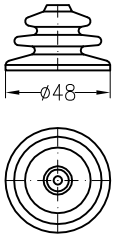
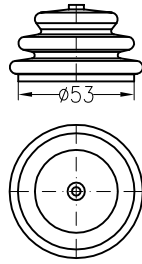
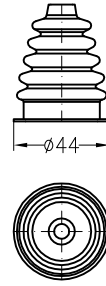
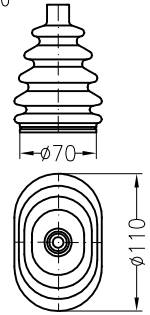
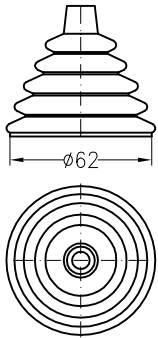
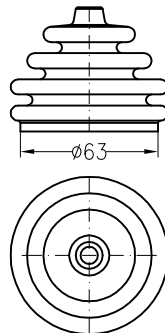
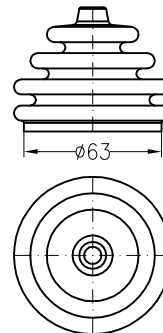
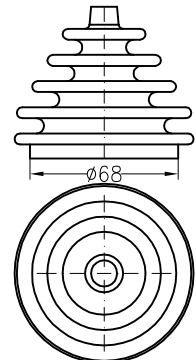
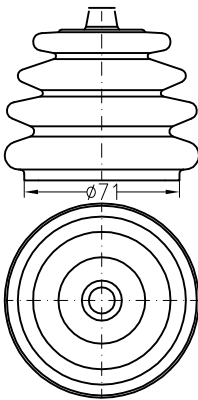
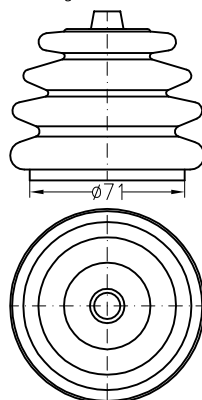
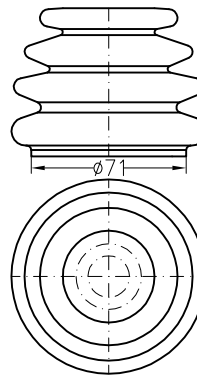
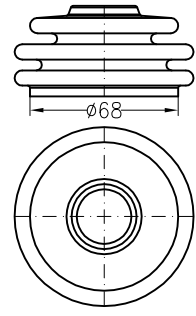
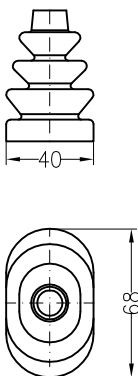
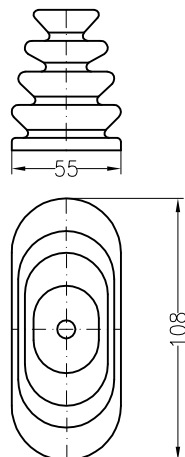
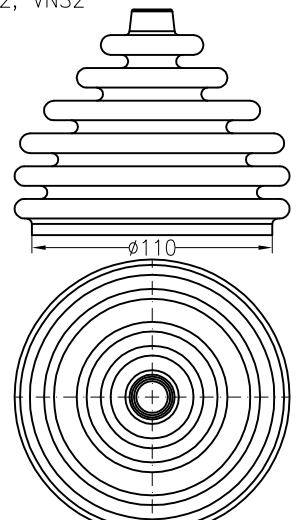


E 1/1
2014Gummi- und Lederstulpen
Rubber and leather bootE 1/1
2014M024A10316
für Meisterschalter M0, MON
GMON, SMONM024Z12024
M0, MON, GMON, SMONST0-0712651
ST0ST2-0423810
ST2V040KE12210
für Meisterschalter VCS0,
CS1 mit Rosette 72x72 mm,
VCS0 mit Stulpenhalterring S0V040KE228748
CS0, CS1, VNS0, NNS0V040KE2-K30285
CS0, CS1, VNS0, NNS0
kältebeständig bis -40°V041K11426
CS1_S, VCS0_S mit
StulpenhalterringV041N11960
für Meisterschalter VCS0, VNS0,
NS3 mit Rosette 96x96 mmV041NK30283
VCS0, VNS0, NS3
mit Rosette 96x96 mm
kältebeständig bis -40°V041N-UG23220, V041N-UGA23588
V041N-UGC23588
V041N-UGD13222
V041N-UGN16372
VCS0, VNS0V041K-G928747
VCS0, VNS0 mit G9 GriffNS0-GG013233
für Meisterschalter NS0-GGV184GG18147
NS2-GGV041L18076 W041L-1228414
VCS0, VNS0 mit
Rosette 96x96 mmV184K11700
NS2, VNS2
Spohn + Burkhardt
Elektrotechnische Fabrik Blaubeuren

 Mauergasse 5
89143 BLAUBEUREN
GERMANY

 Tel. +49 7344 171-0 info@spobu.de
Fax +49 7344 171-99 www.spobu.de