

KEYSTON HDMI-HDMI BK



OPIS:

Adapter gniazdo HDMI na gniazdo HDMI, przeznaczony do montażu w miejscu standardowych gniazd typu keystone (RJ45), rozwiązanie idealne w przypadku potrzeby wykonania instalacji multimedialnej, kolor czarny.

WŁAŚCIWOŚCI:

Złącze HDMI 19pin żeńskie, styki złożone 15 μ m,
izolacja: PVC
Obudowa: ABS
Możliwość wyboru kolorów na zamówienie
Kompatybilny z modułem uniwersalnym do wtyków keystone

Parametry elektryczne:

Rezystancja izolacji: $\geq 20M\Omega$

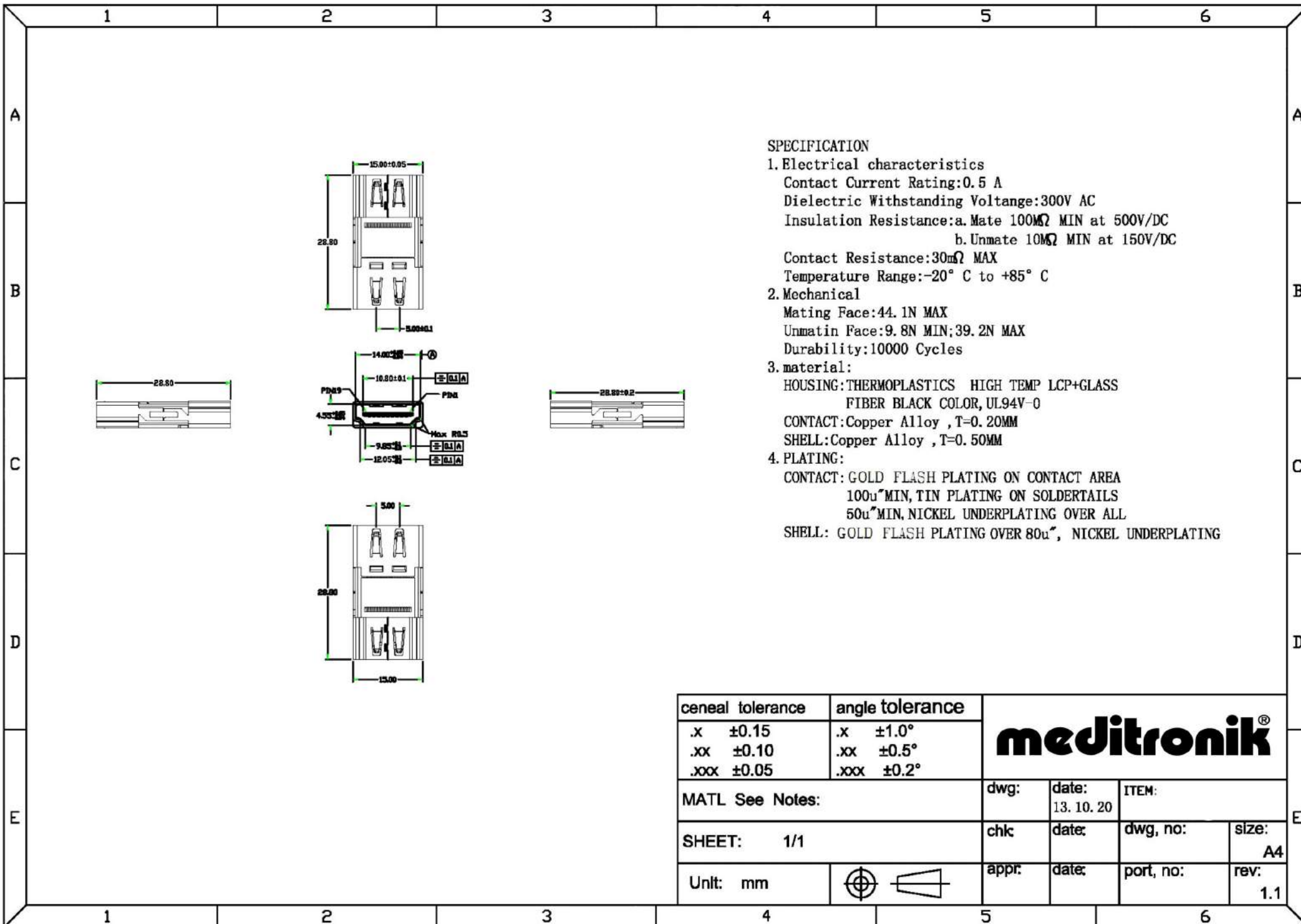
Rezystancja styków : $\leq 3\Omega$

Dopuszczalne napięcie: 300 V DC/0.1S

Spełnia kryteria specyfikacji HDMI 1.4

HDMI[®]
HIGH DEFINITION MULTIMEDIA INTERFACE





SPECIFICATION

1. Electrical characteristics

Contact Current Rating:0.5 A

Dielectric Withstanding Voltage:300V AC

Insulation Resistance:a. Mate 100MΩ MIN at 500V/DC

b. Unmate 10MΩ MIN at 150V/DC

Contact Resistance:30mΩ MAX

Temperature Range:-20° C to +85° C

2. Mechanical

Mating Face:44.1N MAX

Unmating Face:9.8N MIN;39.2N MAX

Durability:10000 Cycles

3. material:

HOUSING:THERMOPLASTICS HIGH TEMP LCP+GLASS

FIBER BLACK COLOR, UL94V-0

CONTACT:Copper Alloy , T=0.20MM

SHELL:Copper Alloy , T=0.50MM

4. PLATING:

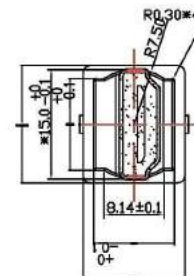
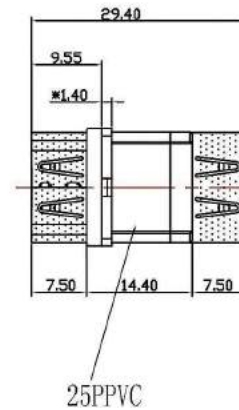
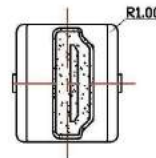
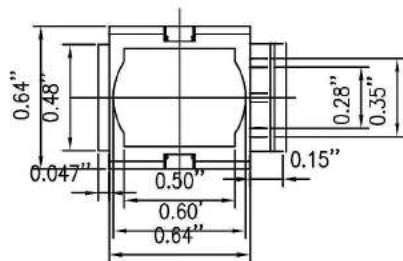
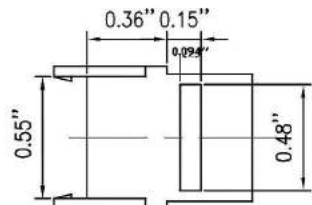
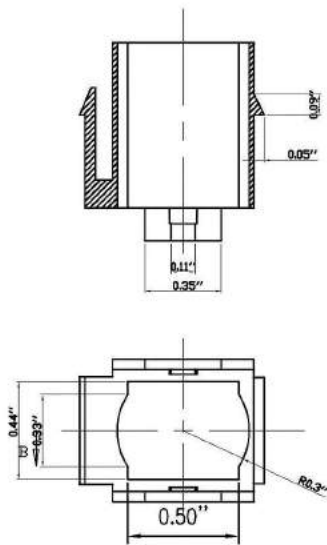
CONTACT: GOLD FLASH PLATING ON CONTACT AREA

100u"MIN, TIN PLATING ON SOLDER TAILS

50u"MIN, NICKEL UNDERPLATING OVER ALL

SHELL: GOLD FLASH PLATING OVER 80u", NICKEL UNDERPLATING

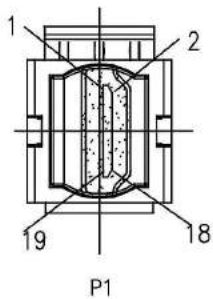
ceneral tolerance		angle tolerance		meditronik®			
.x	±0.15	.x	±1.0°				
.xx	±0.10	.xx	±0.5°	13. 10. 20			
.xxx	±0.05	.xxx	±0.2°				
MATL See Notes:				chc	date:	dwg, no:	size:
SHEET: 1/1				appr:	date:	port, no:	rev:
Unit: mm							A4
							1.1



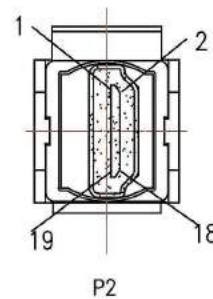
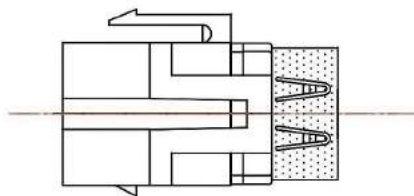
PIN OUT

- | | | |
|-------|-------|-------|
| | P1 | P2 |
| 1 | _____ | 1 |
| 2 | _____ | 2 |
| 3 | _____ | 3 |
| 4 | _____ | 4 |
| 5 | _____ | 5 |
| 6 | _____ | 6 |
| 7 | _____ | 7 |
| 8 | _____ | 8 |
| 9 | _____ | 9 |
| 10 | _____ | 10 |
| 11 | _____ | 11 |
| 12 | _____ | 12 |
| 13 | _____ | 13 |
| 14 | _____ | 14 |
| 15 | _____ | 15 |
| 16 | _____ | 16 |
| 17 | _____ | 17 |
| 18 | _____ | 18 |
| 19 | _____ | 19 |
| SHELL | _____ | SHELL |

MODULE DRAWING(UNIT:INCH)



P1



P2



TOLERANCE							
	INCHES	M/M					
.X	.015	.30					
.XX	.010	.10	SCALE	NONE		REV	E
.XXX	.005	.05	UNIT	INCH			
DRAWN BY			SHEET	1/2	DWG NO.		
CHECK BY			DATE	09/14/10	TITLE		
APPD BY			TITLE		HDMI19P F/F		
			PART NO.		KEYSTON HDMI-HDMI BK		

meditronik®