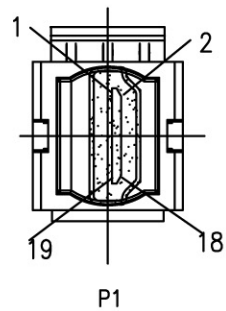
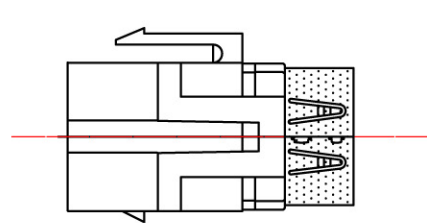


Printing FOR Snap in module

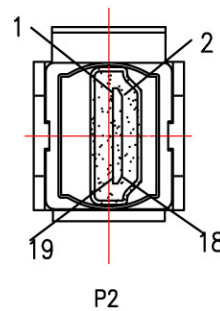
MODULE DRAWING(UNIT:INCH)



P1



ASSEMBLY DRAWING



P2

25P PVC

PIN OUT

P1	P2
1	1
2	2
3	3
4	4
5	5
6	6
7	7
8	8
9	9
10	10
11	11
12	12
13	13
14	14
15	15
16	16
17	17
18	18
19	19
SHELL	SHELL

NOTE:

- 1.Adapter: HDMI 19P F/F Adapter,Insulation:Black;Gold Plated Shell.
- 2.Module: Snap in module, PC+ ABS.
- 3.Molding 25P PVC .(Molding PVC Color Same With Module)
- 4.TEST: 100% ELECTRICAL TESTING.
- 5.support for 7680*4320 60 Hz ,HDCP 2.2 in addition to HDMI 2.1, Color space 4:4:4,HDR
- 6.Equalizes and extends HDMI signal up to 9 feet at 8K/60Hz using 28AWG HDMI 2.1 cable.(“DISPLAY” with 3FT”; “SOURCE”with 6FT”)

