



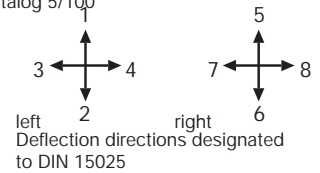
The multi-axis controller V11 is a rugged switching device according IEC 947-5-1 EN 60947 DIN VDE 0660-200 for hoisting applications. The modular design enables the switching device to be used universally. The V11 is resistant to oil, maritime climate ozone and UV radiation.

Contact complement 2 A 250 V AC 15 res. 1 A 24 V DC 13 (standard)
or 4 A 250 V AC 15 (special)

Mechanical life 10 million (operating cycles)
Permissible ambient temperature Operation -40° C to + 60° C
Storage -50° C to + 80° C

Climate resistance
Damp heat constant DIN IEC 68 part 2-3
Damp heat cyclic DIN IEC 68 part 2-30
Degree of protection front IP 54 IEC 529 DIN 40050
Technical data look catalog 5/100

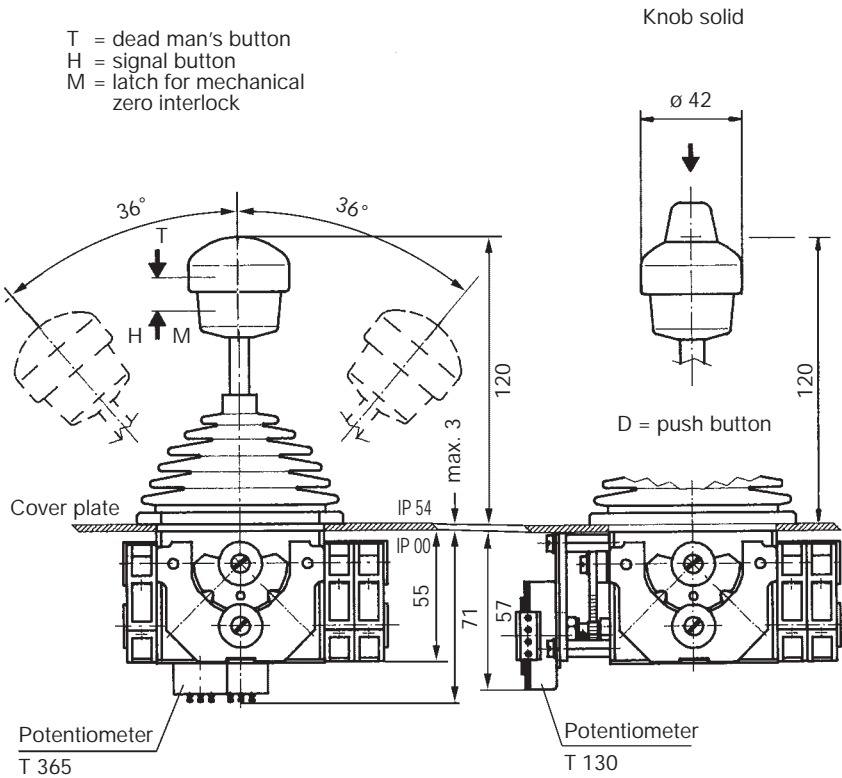
Spindle block with schematic representation of the master controller installation and deflection directions. Version shown for Left-hand side installation (right-hand side installation is mirror image).



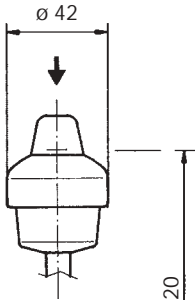
Pos.	V 11.1	V 11	Type	Weight gramm	Price EURO
1			V 11.1	400	
2					
3			V 11	500	
4					
5					
10	Gate cross-shaped	(prohibits diagonal shifting)	P	60	
11	Gate special-shaped	(for e. H-gate)	P	60	
12	Spring return in 0-position	(for each direction)	Z	25	
13	Friktion brake	(for each direction)	R	20	
14					
20	Control-handle with knob solid		M	50	
21	Control-handle with latch for mechanical zero interlock		T	100	
22	Control-handle with dead man's button 1 NO		H	100	
23	Control-handle with signal button 1 NO		D	110	
24	Control-handle with push button 1 NO		DV	110	
25	Control-handle with flat push button 1 NO		B 1	40	
26	Control handle with palm grip B 1		B 1T	60	
27	Control handle with palm grip B 1 with push button top 1 NO				
28	Control handle long or short 140, 100 mm				
29	More knobs, grips and T-grips with and without signal devices look catalog 1/280...				
30	Masterswitch switching sequence 4-0-4	No. of contacts 2	01	70	
31		4	02	130	
32	Direction 1-2 and 3-4 each 1 masterswitch	6	03	190	
33	Switching program according contact-arrangement MS... look catalog 5/001				
34	or to your contact-arrangement				
35					
36					
40	Potentiometer e.t.c. each masterswitch with mounted Conductive-plastic-potentiometer T 365, with centre tap linear Life 10 ⁷ switching cycles resistance 2 x 5 kOhm, 0,5 Watt wiper current max. 1 mA		P	70	
41	Prepared for mounting potentiometer shaft 6 mm adjusting-angle 2 x 150°		(P)		
42	Prepared for mounting potentiometer e.t.c. adjusting-angle variable.		(P)		
43	more Potentiometer e.t.c. look catalog 1/240...				
50	Plastic housing I 160 x 240, masterswitch max. size 03		I	800	
51					
52	More housing look catalog 1/250				
60	Indicating labels not engraved with 2 or 4 arrows				
61	Engraved each 10 characters				
62					
70	Command and indicating devices look catalog 1/260				



T = dead man's button
H = signal button
M = latch for mechanical zero interlock

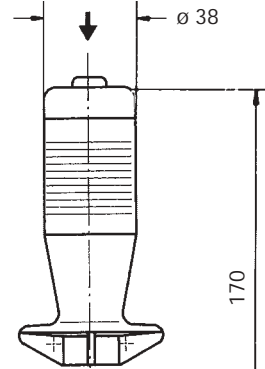


Knob solid

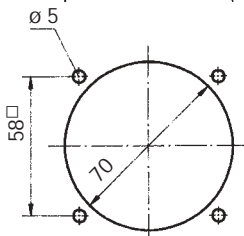
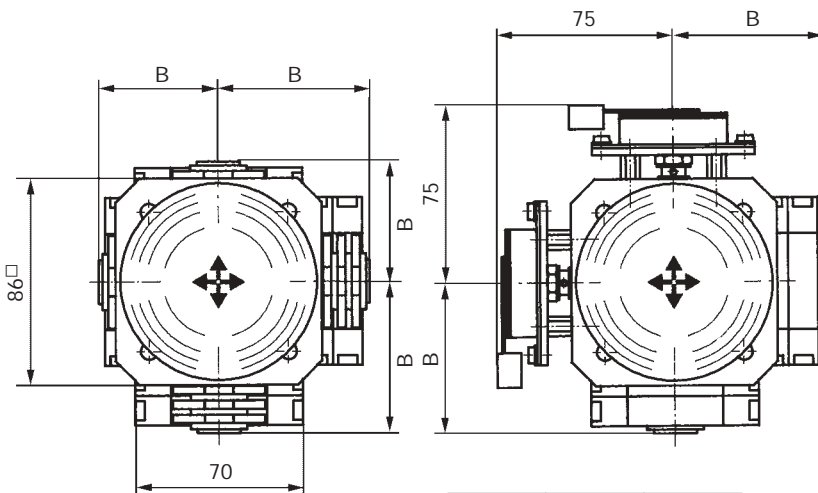
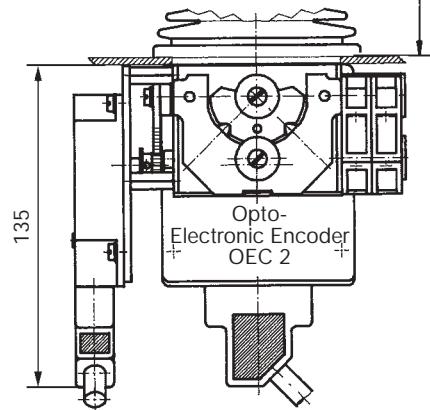


D = push button

palm grip B 1



B1T = dead man's button

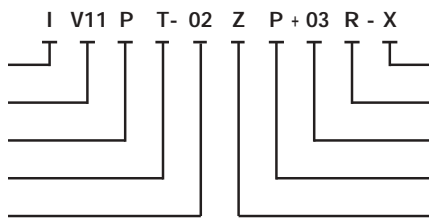


Hole pattern

Type	No. of contacts	Dimension B
01	2	51
02	4	64
03	6	76

Example for type-sign

- Plastic housing
- Multi-axis controller
- Gate
- Dead man's button
- Masterswitch direction 1-2



- Special please to describe
- Friction brake direction 3-4
- Masterswitch direction 3-4
- Potentiometer e.t.c. direction 1-2
- Spring return direction 1-2