

The single-axis controller S 6 is a rugged switching device according IEC 947-5-1 EN 60947 DIN VDE 0660-200 for hoisting applications. The modular design enables the switching device to be used universally. The S 6 is resistant to oil, maritime climate ozone and UV radiation.

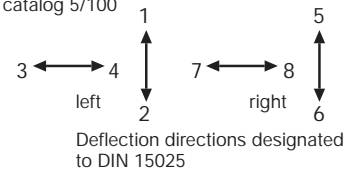
Contact complement 2 A 250 V AC 15 res. 1 A 24 V DC 13 (standard) or 4 A 250 V AC 15 (special)

Mechanical life 10 million (operating cycles)
Permissible ambient temperature Operation -40° C to + 60° C
Storage -50° C to + 80° C

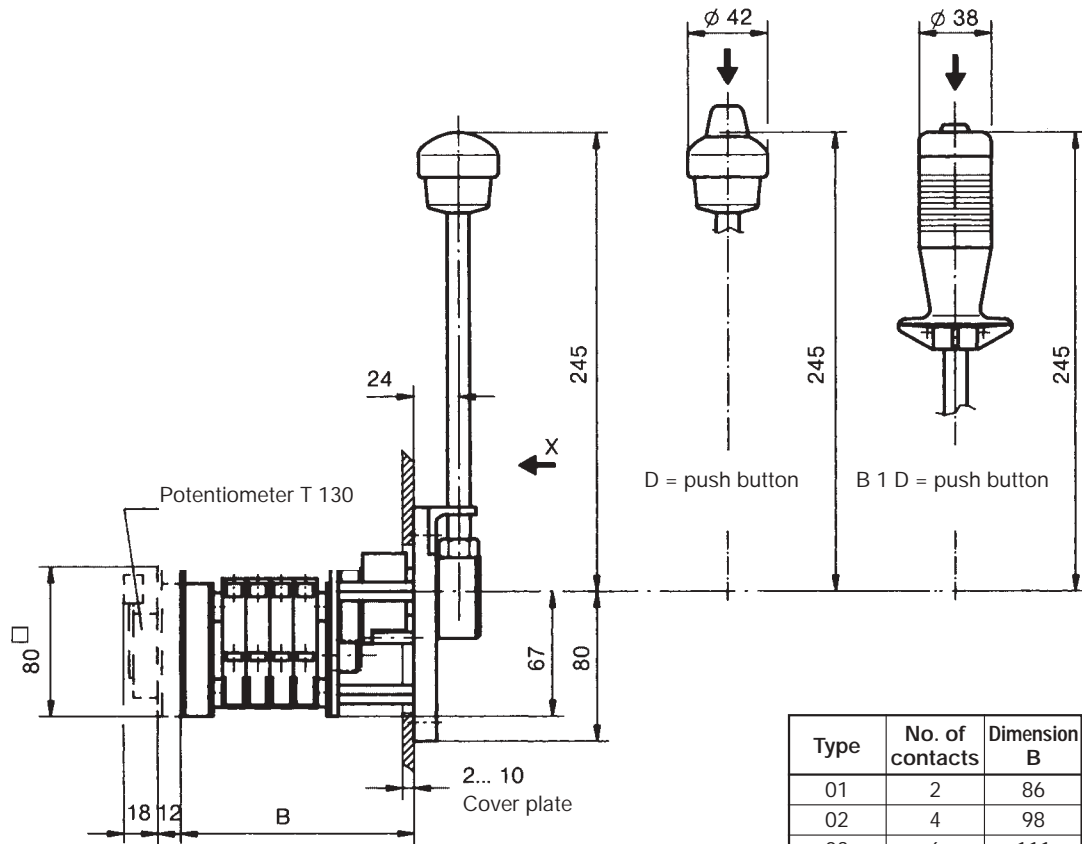
Climate resistance
Damp heat constant DIN IEC 68 part 2-3
Damp heat cyclic DIN IEC 68 part 2-30
Degree of protection front IP 54 IEC 529 DIN 40050

Technical data look catalog 5/100
Description data look catalog 5/002

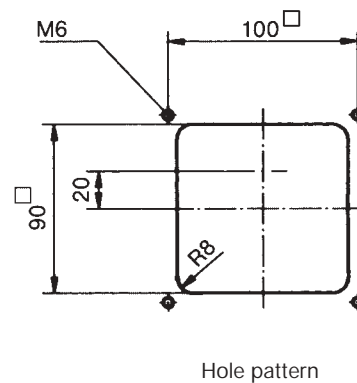
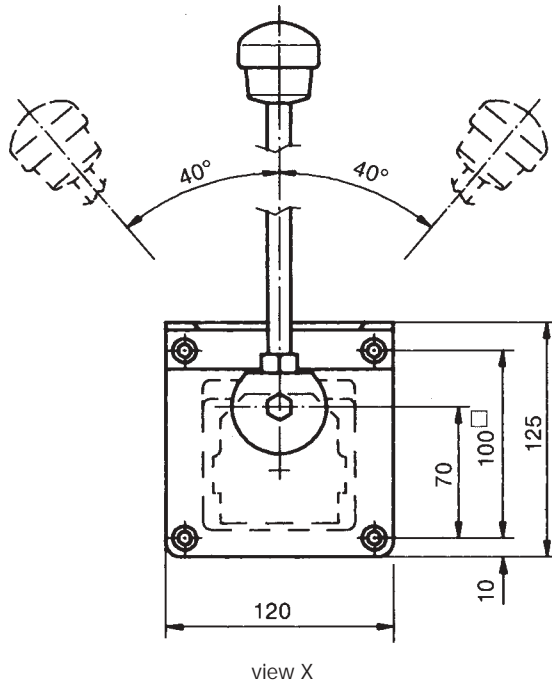
Spindle block with schematic representation of the master controller installation and deflection directions. Version shown for Left-hand side installation (right-hand side installation is mirror image).



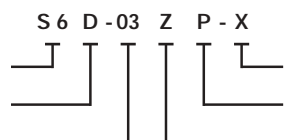
Pos.	S 6	Type	Weight gramm	Price EURO	
1		S 6	960		
2					
3					
4					
5					
10	Spring return in 0-position Friktion brake	Z	110		
11		R	30		
12					
13					
14					
20	Control-handle with push button 1 NO with flexible cable	D	110		
21					
22					
23					
24					
25					
26		Control handle with palm grip B 1	B 1	40	
27		Control handle with palm grip B 1 with push button top 1 NO	B 1D	60	
28		Control handle long or short 265, 225 mm			
29					
30	Masterswitch switching sequence 4-0-4	No. of contacts 2	01	290	
31		4	02	350	
32		6	03	410	
33		8	04	470	
34		10	05	530	
35		12	06	590	
36		Switching sequence 5-0-5 or 6-0-6			
40	Potentiometer e.t.c. each masterswitch with mounted Wire-wound potentiometer T 130, with centre tap linear Life 10 ⁷ switching cycle resistance 2 x 0,5/1/2/5/10 kOhm, 1,5 Watt wiper current max. 10 mA	P	70		
41	Prepared for mounting potentiometer shaft 6 mm adjusting-angle 2 x 150°	(P)			
42	Prepared for mounting potentiometer e.t.c. adjusting-angle variable.	(P)			
43	more Potentiometer e.t.c. look catalog 1/240...				
50	More housing look catalog 1/250				
51					
52					
60	Indicating labels not engraved with 2 arrows				
61	Engraved each 10 characters				
62					
70	Command and indicating devices look catalog 1/260				



Type	No. of contacts	Dimension B
01	2	86
02	4	98
03	6	111
04	8	123
05	10	136
06	12	148



Example for type-sign
Single-axis controller
Push button
Masterswitch direction 1-2



Special please to describe
Potentiometer e.t.c.
Spring return