

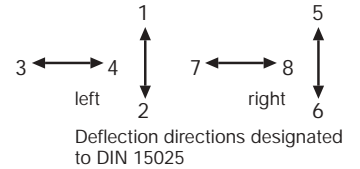
The single-axis controller S 2 is a rugged switching device according IEC 947-5-1 EN 60947 DIN VDE 0660-200 for electro-hydraulic applications. The modular design enables the switching device to be used universally. The S 2 is resistant to oil, maritime climate ozone and UV radiation.

**Contact complement 2 A 250 V AC 15 res. 3 A 24 V DC 13**

Mechanical life 6 million (operating cycles)  
Permissible ambient temperature Operation -40° C to + 60° C  
Storage -50° C to + 80° C

Climate resistance  
Damp heat constant DIN IEC 68 part 2-3  
Damp heat cyclic DIN IEC 68 part 2-30  
Degree of protection front IP 54 IEC 529 DIN 40050  
Technical data look catalog 5/100

Spindle block with schematic representation of the master controller installation and deflection directions. Version shown for Left-hand side installation (right-hand side installation is mirror image).



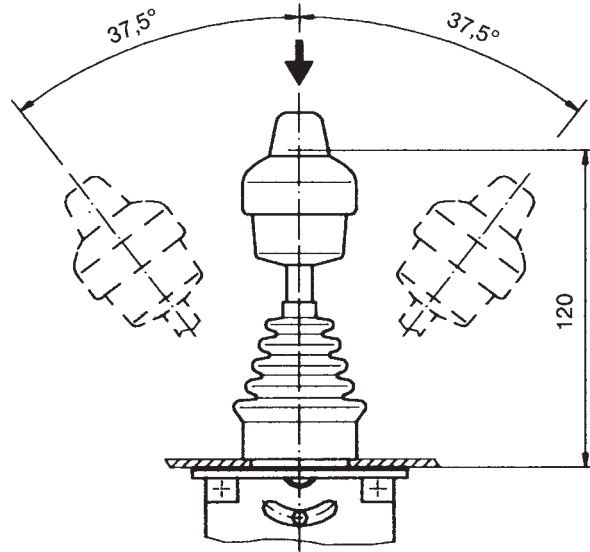
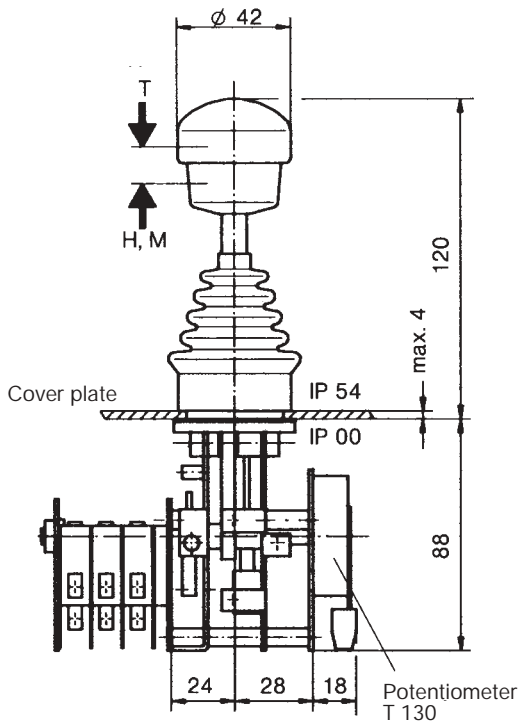
Pos.	S 2	Type	Weight gramm	Price EURO
1		S 2	600	
2				
3				
4				
5				
10	Gate special-shaped (for position view) M 1699 Spring return in 0-position Friktion brake	P	60	
11		Z	20	
12		R	20	
13				
14				
20	Control-handle with knob solid Control-handle with latch for mechanical zero interlock Control-handle with dead man's button 1 NO Control-handle with signal button 1 NO Control-handle with push button 1 NO Control-handle with flat push button 1 NO Control handle with palm grip B 1 Control handle with palm grip B 1 with push button top 1 NO Control handle long or short 140, 100 mm More knobs, grips and T-grips with and without signal devices look catalog 1/280...	M	50	
21		T	50	
22		H	50	
23		D	60	
24		DV	60	
25		B 5	40	
26		B 5T	60	
27				
28				
29				
30	Masterswitch switching sequence 5-0-5 No. of contacts Switching program according contact-arrangement MS... look catalog 5/001 or to your contact-arrangement Micro change over contact (MZT1) positive opening (additional price)	3	02	300
31		5	03	330
32		7	04	360
33		9	05	390
34				
35				
36				
37				
40	Potentiometer e.t.c. each masterswitch with mounted Wire-wound potentiometer T 130, with centre tap linear Life 10' switching cycle resistance 2 x 0,5/1/2/5/10 kOhm, 1,5 Watt wiper current max. 10 mA Prepared for mounting potentiometer shaft 6 mm adjusting-angle 2 x 150° Prepared for mounting potentiometer e.t.c. adjusting-angle variable. more Potentiometer e.t.c. look catalog 1/240...	P	70	
41		(P)		
42		(P)		
43				
50	Steel sheet housing B 200 masterswitch Gr. 05 More housing look catalog 1/250	B	1300	
51				
52				
60	Indicating labels not engraved with 2 arrows Engraved each 10 characters			
61				
62				
70	Command and indicating devices look catalog 1/260			



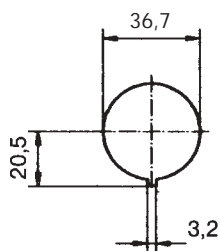
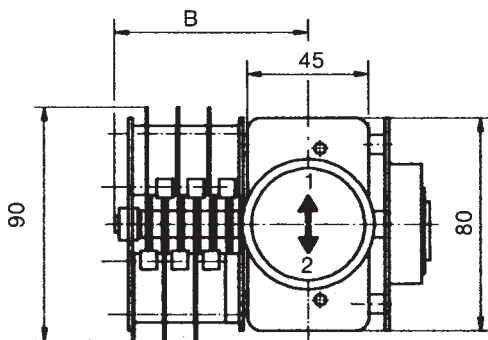
T = dead man's button  
H = signal button  
M = latch for mechanical zero interlock

Knob solid

D = -push button

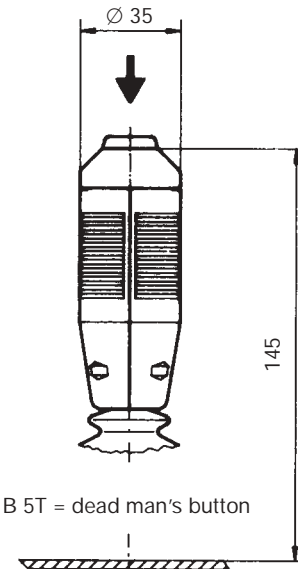


Type	No. of contacts	Dimension B
02	3	62
03	5	72
04	7	83
05	9	93

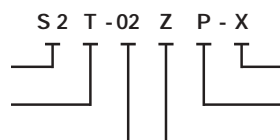


Hole pattern

palm grip B 5



Example for type-sign  
Single-axis controller  
Dead man's button  
Masterswitch direction 1-2



Special please to describe  
Potentiometer e.t.c.  
Spring return