



The single-axis controller S 14 is a rugged switching device according IEC 947-5-1 EN 60947 DIN VDE 0660-200 for remote control and hoisting applications.

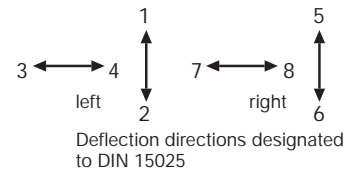
The S 14 is resistant to oil, maritime climate ozone and UV radiation.

Contact complement 2 A 250 V AC 15 res. 1 A 24 V DC 13

Mechanical life 6 million (operating cycles)
Permissible ambient temperature Operation -40° C to + 60° C
Storage -50° C to + 80° C

Climate resistance
Damp heat constant DIN IEC 68 part 2-3
Damp heat cyclic DIN IEC 68 part 2-30
Degree of protection front IP 65 IEC 529 DIN 40050
Technical data look catalog 5/100

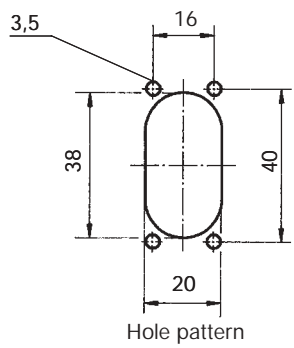
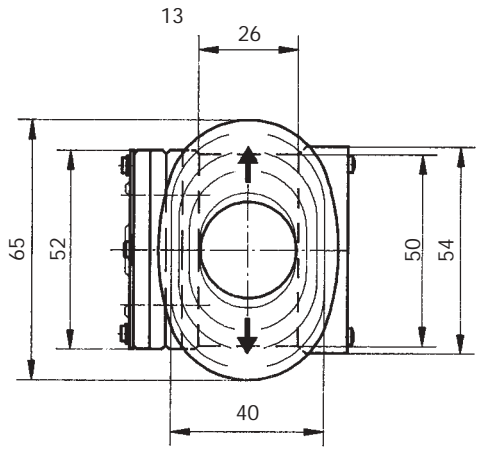
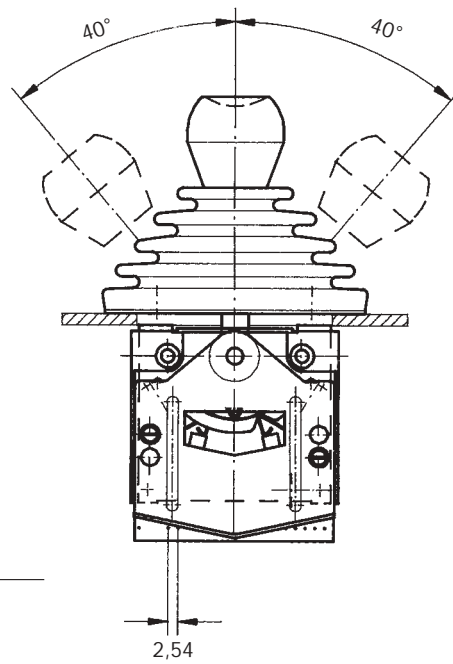
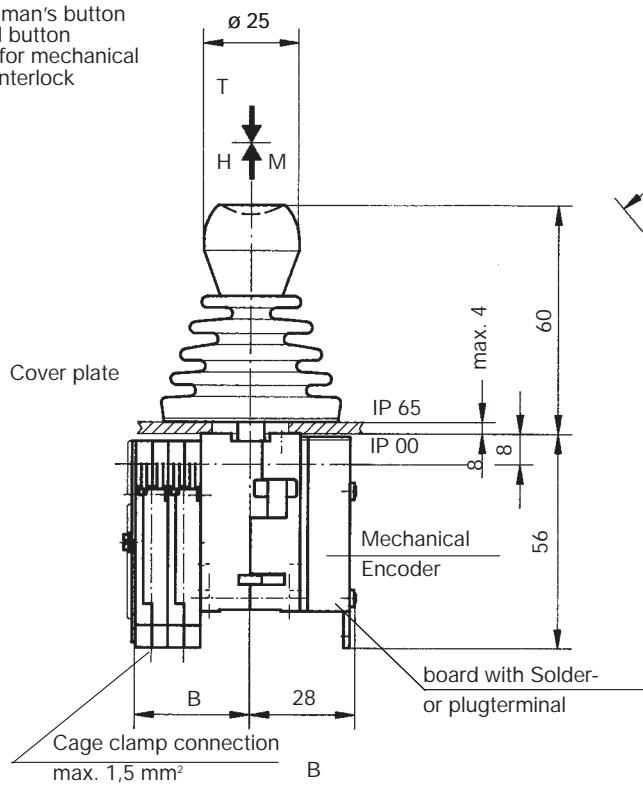
Spindle block with schematic representation of the master controller installation and deflection directions. Version shown for Left-hand side installation (right-hand side installation is mirror image).



Pos.	S 14	Type	Weight gramm	Price EURO
1		S 14	150	
2				
3				
4				
5				
10 11 12 13 14	Spring return in 0-position (include in the spindle block)	Z		
20	Control-handle with knob solid	M	50	
21	Control-handle with latch for mechanical zero interlock	T	80	
22	Control-handle with dead man's button 1 NO	H	80	
23	Control-handle with signal button 1 NO			
24				
25				
26				
27				
28	Control-handle long 80 mm			
29				
30	Masterswitch switching sequence 4-0-4 adjustable (with encoder 6-0-6)	No. of contacts	2	
31			4	01 70
32	Direction 1-2 or 3-4		6	02 130
33	Switching program according contact-arrangement MS... look catalog 5/001			03 190
34	or to your contact-arrangement			
35				
36				
44	Mechanical Encoder with mounted direction 1-2 and 3-4 each 1 Encoder life 5 x 10 ⁶ switching cycles, 0,5 Watt wiper current max. 1 mA Mechanical Encoder MEC 1-2 male connector EA/02-10 contact-arrangement MS 26-0 look catalog 5/001 Conductive-plastic-potentiometer with centre tap linear resistance 2 x 10 kOhm	P	20	
45	Mechanical Encoder MEC 1-7 male connector EA / 10-10 contact-arrangement MS 26-0-1 look catalog 5/001 Conductive-plastic-potentiometer with centre tap linear resistance 2 x 5 kOhm	P	20	
46	Mechanical Encoder MEC 1-6 male connector EA / 09-10, 6 Bit Gray-Code	P	30	
47	Mechanical Encoder MEC 1-6-5 male connector ER / 36-10 powersupply 24 V DC, output power impressed 4-20 mA	P	30	
48	Mechanical Encoder MEC 1-6-8 male connector ER / 36-10 powersupply 24 V DC, output power impressed 0-20 mA	P	30	
52	Housing look catalog 1/250			
60	Indicating labels not engraved with 2 or 4 arrows			
61	Engraved each 10 characters			
70	Command and indicating devices look catalog 1/260			



T = dead man's button
H = signal button
M = latch for mechanical zero interlock



Type	No. of contacts	Dimension A
01	2	24
02	4	33
03	6	42

Example for type-sign

Single-axis controller

Dead man's button

Masterswitch direction 1-2

S 14 T - 01 Z P - X



Special please to describe

Mechanical Encoder MEC direction 1-2

Spring return direction 1-2