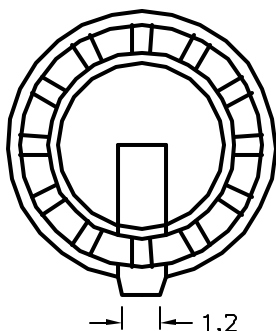
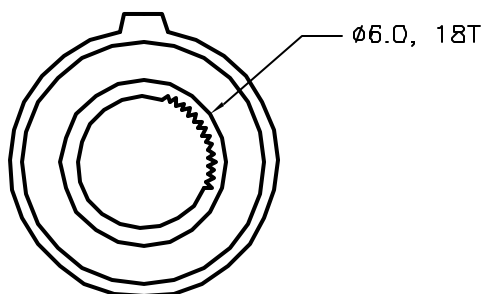
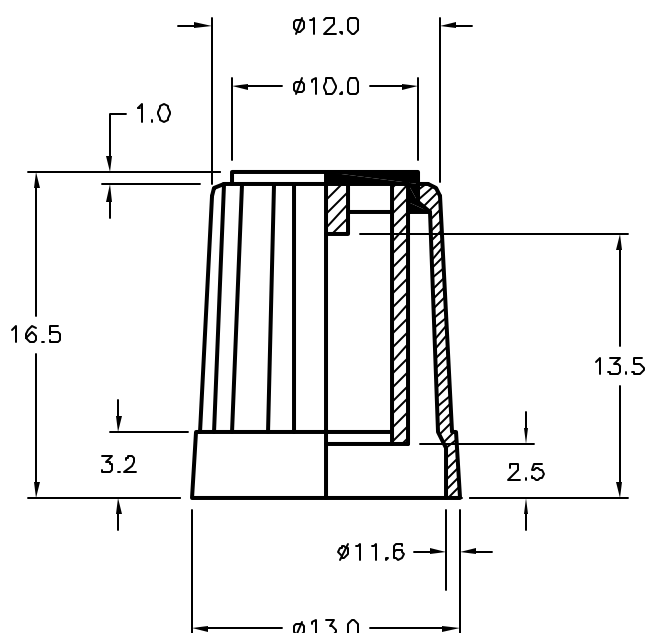


REVISIONS				DOC. NO. SPC-F004 * Effective: 7/8/02 * DCP No: 1398					
DCP #	REV	DESCRIPTION		DRAWN	DATE	CHECKD	DATE	APPRVD	DATE
1933	A	RELEASED		EO	08/07/08	JN	10/10/08	JN	10/10/08



	Cap Color
1063	Red
1064	Yellow
1065	Blue
1066	Green
1067	Grey



### SPECIFICATIONS

1. MATERIAL: ABS
2. SHAFT HOLE: 6.0mm Splined shaft (18 teeth)
3. BODY COLOR: Black

SPC-F004.DWG

TOLERANCES:  UNLESS OTHERWISE SPECIFIED, DIMENSIONS ARE FOR REFERENCE PURPOSES ONLY.	DRAWN BY:	DATE:	DRAWING TITLE:						
	EKLAS ODISH	09/07/08	Dial Type Knobs, Knurled Tapered Sides, Top/Side Indicator Line, ABS w/Color Cap, Push On						
	CHECKED BY:	DATE:	SIZE	DWG. NO.			ELECTRONIC FILE		REV
	Jason Nash	10/10/08	A						A
	APPROVED BY:	DATE:	SCALE: NTS		U.O.M.: MILLIMETERS		SHEET: 1 OF 1		

ALL RIGHTS RESERVED. NO PORTION OF THIS PUBLICATION, WHETHER IN WHOLE OR IN PART CAN BE REPRODUCED WITHOUT THE EXPRESS WRITTEN CONSENT OF SPC TECHNOLOGY. DISCLAIMER: ALL STATEMENTS AND TECHNICAL INFORMATION CONTAINED HEREIN ARE BASED UPON INFORMATION AND/OR TESTS WE BELIEVE TO BE ACCURATE AND RELIABLE. SINCE CONDITIONS OF USE ARE BEYOND OUR CONTROL, THE USER SHALL DETERMINE THE SUITABILITY OF THE PRODUCT FOR THE INTENDED USE AND ASSUME ALL RISK AND LIABILITY WHATSOEVER IN CONNECTION THEREWITH.