

MODEL 20HP

● Wirewound ● Bushingmount ● Servomount ● RoHS Compliant



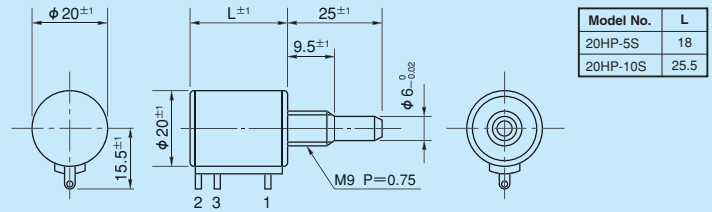
Model 20HP-10S

Standard Model Numbers

| Bushingmount type | |
|-------------------|-----------|
| 5-turn models | 20HP-5S |
| 10-turn models | 20HP-10S |
| Servomount type | |
| 5-turn models | 20HPS-5S |
| 10-turn models | 20HPS-10S |

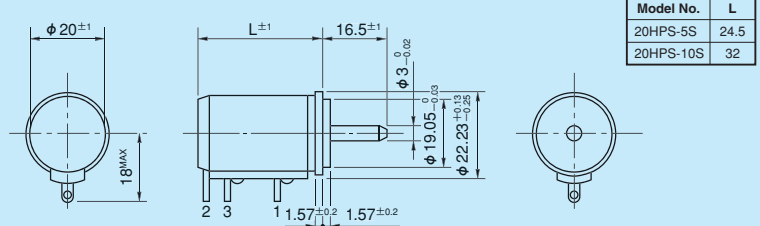
Standard Dimensions

Bushingmount type



Note: 1 pc. inner teeth washer and 2 pcs. hex nuts are attached.

Servomount type



General Specifications

| | | |
|---------------------------------|---|-------------------|
| Standard Resistance Range | 100Ω to 50kΩ (5-turn, 10-turn) | |
| Max. Practical Resistance Value | 100kΩ (5-turn) 150kΩ (10-turn) | |
| Total Resistance Tolerance | Standard Class ±3% (H) Precision Class ±1% (F) | |
| Independent Linearity Tolerance | 5-turn | 10-turn |
| | Standard Class | ±0.3% ±0.2% |
| | Precision Class | ±0.2% ±0.1% |
| | (Within 5kΩ) | (±0.25%) (±0.15%) |
| Power Rating | 1.0W (5-turn) 2.0W (10-turn) | |
| Noise | Within 100Ω E.N.R. | |
| Electrical Travel | 360° × n ± 5° (n: No. of turns) | |

| | |
|------------------------------------|---|
| Mechanical Travel | 360° × n $\begin{matrix} +10^\circ \\ 0^\circ \end{matrix}$ (n: No. of turns) |
| Insulation Resistance | Over 100MΩ at 1,000V.D.C. |
| Dielectric Strength | 1 minute at 1,000V.A.C. |
| Starting Torque | Within 5mN · m (50gf · cm) (Bushingmount type) |
| | Within 3mN · m (30gf · cm) (Servomount type) |
| Stopper Strength | Approx. 0.9N · m (9kgf · cm) (Bushingmount type) |
| | Approx. 0.6N · m (6kgf · cm) (Servomount type) |
| Resistance Temperature Coefficient | ±20p.p.m./°C |
| Mass | Approx. 20g (5-turn) |
| | Approx. 25g (10-turn) |

Standard Resistance Values ■ No. of Wire Turns ■ Resistance Wire Used

| Resist. Value (Ω) | 100 | 200 | 500 | 1k | 2k | 5k | 10k | 20k | 50k | 100k |
|-------------------|--------------|-------|-------|-------|-------|--------------|-------|-------|--------|----------|
| 20HP-5S | 1,100 | 1,500 | 2,000 | 2,500 | 2,400 | 3,200 | 3,900 | 4,800 | 5,500 | ※ 6,500 |
| 20HP-10S | 1,800 | 2,200 | 3,200 | 4,000 | 5,000 | 5,000 | 6,400 | 7,800 | 10,000 | ※ 11,000 |
| Resist. Wire Used | Cu-Ni System | | | | | Ni-Cr System | | | | |

Note: Mark※ shows special high resistance value.

Special Specifications Available

(In case of the potentiometer with special specifications, the general specifications and environmental specifications may change. Please consult us in advance.)

- 3-turn type (S20HP-3S) ● Lower resistance values (10Ω, 20Ω, 50Ω) ● Extra tap (Available up to 1 tap)
- Multi-ganged (Available up to 2 gangs) ● Shaft with front and rear extension (Rear shaft with 2mm dia. and 10mm length)
- Shaft dia. (φ 6.35mm) & bushing with inch dimension ● Special machining on the shaft
- Simple sealed housing (except servomount type) ● Slipping-clutch incorporated type (S20HP-10S-1782, 20mN · m ~ 60mN · m)
- With a limit-switch adaptor ● With pin terminals for p.c. board (20HP-5P, 20HP-10P)