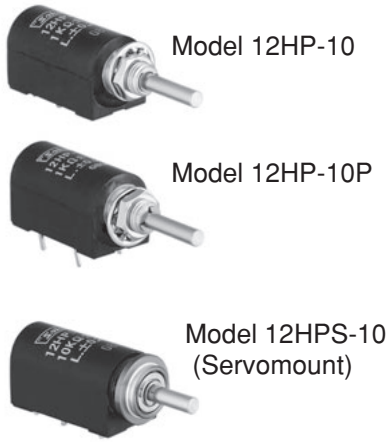


# MODEL 12HP

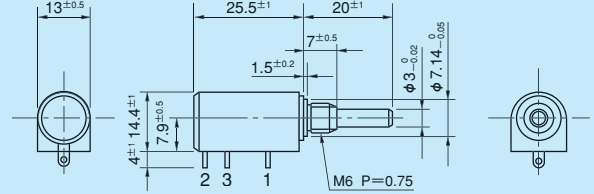
- Wirewound
- Bushingmount
- Servomount
- RoHS Compliant

(With metric dimensions)

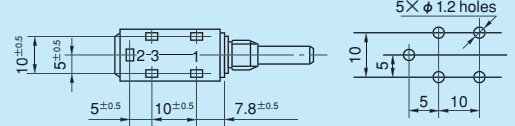


## Standard Dimensions

- Bushingmount type
- With lug terminals

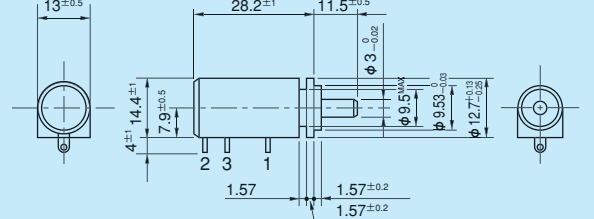


- With pin terminals for p.c. board
- Terminal Holes Layout



Note: 1. 1 pc. each inner teeth washer and hex nut are attached.  
2. Please process the mounting hole on the panel.  
The diameter should be  $7.14\text{mm} + 0.05_0$ .

- Servomount type



Note: 1. Outer dimensions of 5-turn version are same as those of 10-turn.  
2. Servomount type with pin terminals for p.c. board is also available.

## Standard Model Numbers

Bushingmount type	
With lug terminals	
5-turn models	12HP-5
10-turn models	12HP-10
With pin terminals for p.c. board	
5-turn models	12HP-5P
10-turn models	12HP-10P
Servomount type	
5-turn models	12HPS-5
10-turn models	12HPS-10

## General Specifications

Standard Resistance Range	100Ω to 50kΩ (5-turn, 10-turn)	
Max. Practical Resistance Value	70kΩ (5-turn) 100kΩ, 150kΩ (10-turn)	
Total Resistance Tolerance	Standard Class ±3% (H) Precision Class ±1% (F)	
Independent Linearity Tolerance	5-turn	10-turn
	Standard Class	±0.35% ±0.25%
	Precision Class	±0.2% ±0.1%
	(Within 5kΩ)	(±0.25%) (±0.15%)
Power Rating	0.75W (5-turn)	
	1.5W (10-turn)	
Noise	Within 100Ω E.N.R.	
Electrical Travel	360° × n ± 5° (n: No. of turns)	

Mechanical Travel	360° × n + 15° <sub>0</sub> (n: No. of turns)
Insulation Resistance	Over 1,000MΩ at 500V.D.C.
Dielectric Strength	1 minute at 1,000V.A.C.
Starting Torque	Within 3mN · m (30gf · cm) (Bushingmount type)
	Within 2mN · m (20gf · cm) (Servomount type)
Stopper Strength	Approx. 0.15N · m (1.5kgf · cm)
Appropriate fastening torque of the nut	Within 0.8N · m (8kgf · cm)
Resistance Temperature Coefficient	±20p.p.m./°C
Mass	Approx. 10g (Both 5-turn and 10-turn)

## Standard Resistance Values ■ No. of Wire Turns ■ Resistance Wire Used

Resist. Value (Ω)	100	200	500	1k	2k	5k	10k	20k	50k	100k
12HP-5	920	1,190	1,250	1,510	1,790	2,380	3,120	3,800	5,430	—
12HP-10	1,690	1,850	2,560	2,500	3,030	4,170	4,760	6,250	8,330	※10,870
Resist. Wire Used	Cu-Ni System			Ni-Cr System						

Note: Mark ※ shows special high resistance value.

## Special Specifications Available

(In case of the potentiometer with special specifications, the general specifications and environmental specifications may change. Please consult us in advance.)

- 3-turn type (S12HP-3)
- Lower resistance values (20Ω, 50Ω)
- Shaft with front and rear extension (Rear shaft with 0.8mm dia. and 10mm length)
- Special machining on the shaft, Simple sealed housing (in case of servomount type, the housing length becomes longer by 1.2mm)