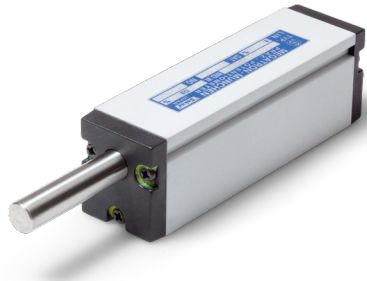


Data Sheet for Linear Sensors

Potentiometric Linear Transducer (Conductive Plastic)

Series CLP21 / CLPR21



The CLP21 series is used in applications where a robust and compact displacement sensor is required.

- Linear potentiometer (conductive plastic) with almost infinite resolution
- Measuring lengths from 15 mm to 100 mm
- Compact dimensions
- Long lifetime (up to 40 million movements)
- With and without spring return

This compact displacement sensor with robust aluminium housing offers many options and covers a wide range of applications. The sensor can be mounted with clamps or by thread holes.

Electrical Data	CLP(R)21-15	CLP(R)21-30	CLP(R)21-50	CLP(R)21-100
Effective electrical travel 1.)	15 ±0,5 mm	30 ±0,5 mm	50 ±0,5 mm	100 ±0,5 mm
Total resistance 1.)	0,5, 1, 2, 5, 10 kOhm			1, 2, 5, 10, 20 kOhm
Resistance tolerance	±10%			
Independent linearity (best straight line) 1.)	±0,7% (±0,5%)		±0,4%(±0,25%)	±0,3% (±0,2%)
Theoretical resolution 1.)	Almost infinite			
Backlash (Hysteresis) 1.)	≤ 0,1 mm			
Max. / recommended wiper current1.)	1 mA (@ 40°C, 1 min im Fehlerfall) / 2 µA			
Power rating @ 40°C (0W @ 55°C)	≤ 0,3 W	≤ 0,6 W	≤ 0,75 W	≤ 1,25 W
Isolation voltage 1.)	1000 VAC, 1min			
Isolation resistance 1.)	1000 MOhm @ 1000 VDC			

Mechanical Data, Environmental Conditions, Miscellaneous	CLP(R)21-15	CLP(R)21-30	CLP(R)21-50	CLP(R)21-100
Mechanical stroke 1.)	15 +2 mm	30 +2 mm	50 +2 mm	100 +2 mm
Lifetime (90% effective electrical travel) 2.)	40 / 20 Mio. movements (CLP21 / CLPR21)			
Max. operational speed	< 5 m/s			
Operational force @ RT 1.) 2.)	< 0,3 N		< 1 N	
End stop force in case of failure	< 90 N			
Operational temperature	-30..+105°C			
Storage temperature	-30..+105°C			
Protection grade (IEC60529)	IP40 (optional IP54)			
Vibration (IEC 68-2-6, Test Fc)	15 g (10..2000 Hz, 0,75mm, 12h)			
Shock (IEC 68-2-27, Test Ea)	50 g, halfsine, 11 ms (18x)			
Housing length IP40	50 ±1 mm	65 ±1 mm	85 ±1 mm	135 ±1 mm
Housing length IP54	56 ±1 mm	71 ±1 mm	91 ±1 mm	141 ±1 mm

Data Sheet for Linear Sensors

Potentiometric Linear Transducer (Conductive Plastic)

Series CLP21 / CLPR21

Mechanical Data, Environmental Conditions, Miscellaneous	CLP(R)21-15	CLP(R)21-30	CLP(R)21-50	CLP(R)21-100
Mass	ca. 60 g	ca. 70 g	ca. 100 g	ca. 140 g
Mounting parts (included in delivery)	4 x screws / tooth washer			
Material housing	Aluminium			
Material push rod	Stainless steel			
Connection type	Soldering tail			

1.) According IEC 60393

2.) Determined by climatic conditions according to IEC 68-1, para. 5.3.1 without load collectives

Please note: Max. permissible supply voltage <75 VDC respectively <50 VAC in addition the max. power rating must be observed

Order Code

Description

Selection: standard=black/bold, possible options=grey/cursive

Series: Without spring return With spring return outside	CLP21 CLPR21				
Effective electrical travel:					
15 mm		15			L0,7% (L0,5%)
30 mm		30			L0,7% (L0,5%)
50 mm		50			L0,4% (L0,25%)
100 mm		100			L0,3% (L0,2%)
Total resistance: <i>Option 500 Ohm (not for CLP(R)21-100)</i>					
1 kOhm <i>Option 2 kOhm</i>					
5 kOhm 10 kOhm <i>Option 20 kOhm only CLP(R)21-100</i>					
			<i>R0,5k</i> R1k <i>R2k</i> R5k R10k <i>R20k</i>		
Resistance tolerance : ±10%				W10%	
Independent linearity: Standard depends on electrical travel <i>Option depends on electrical travel</i>					see above <i>see above</i>
Protection class: Standard IP40 <i>Option IP54</i>					- IP54

Accessory (not included in delivery):

1 set of mounting clamps 4 pcs.

For higher quantities or on-going demand, additional options are available as described below on request

For example:

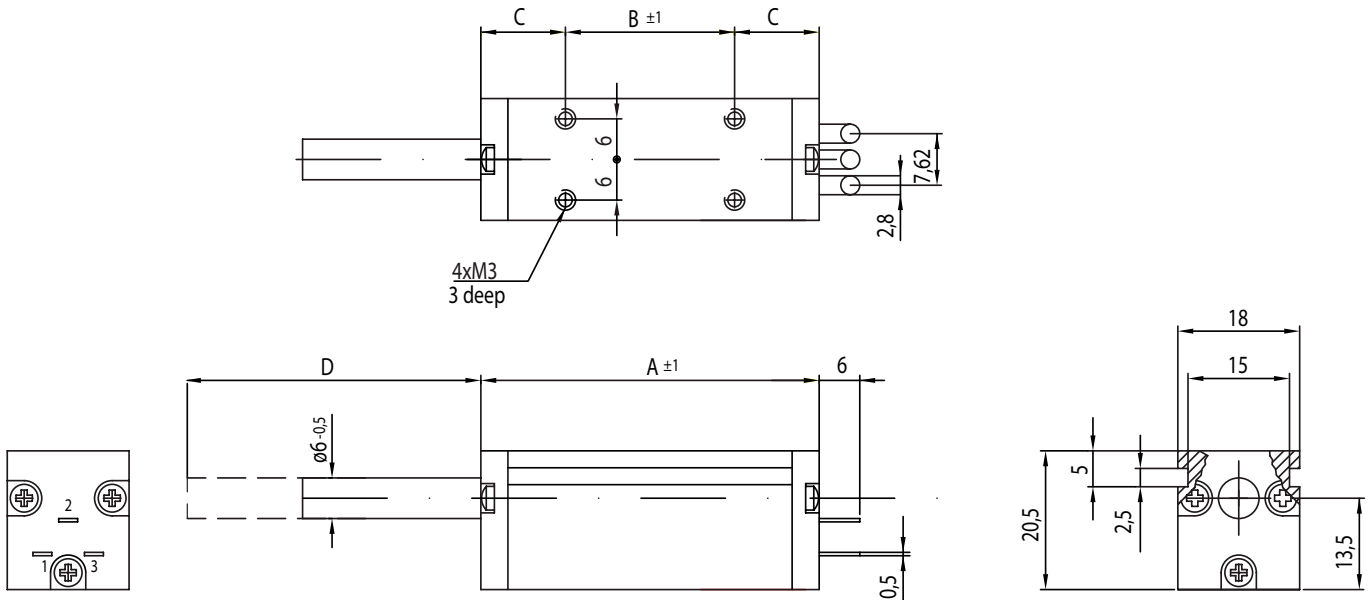
- Assembled leads and cables with / without connector
- Probe, special axis length and much more

Data Sheet for Linear Sensors

Potentiometric Linear Transducer (Conductive Plastic)

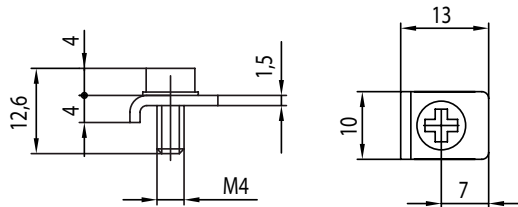
Series CLP21 / CLPR21

Drawing

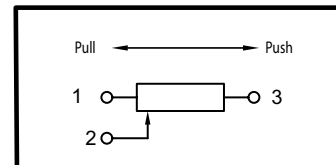


Also version with spring return outside housing available

Servomount clamps (not included in delivery)
(1 set = 4 pcs.)



Connection diagram



Dimensions in mm

Dimensions	CLP21-15	CLP21-30	CLP21-50	CLP21-100
A (IP40) [± 1 mm]	50	65	85	135
A (IP54) [± 1 mm]	56	71	91	141
B [± 1 mm]	25	40	50	100
C [± 1 mm]	12,5	12,5	17,5	17,5
D min. [+2 mm]	25	25	25	25
D max. [+2 mm]	40	55	75	125