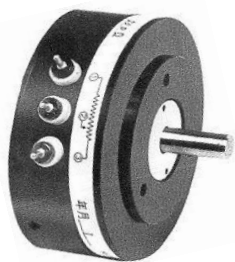


Wire Wound Angle Sensor

CP-6 Series

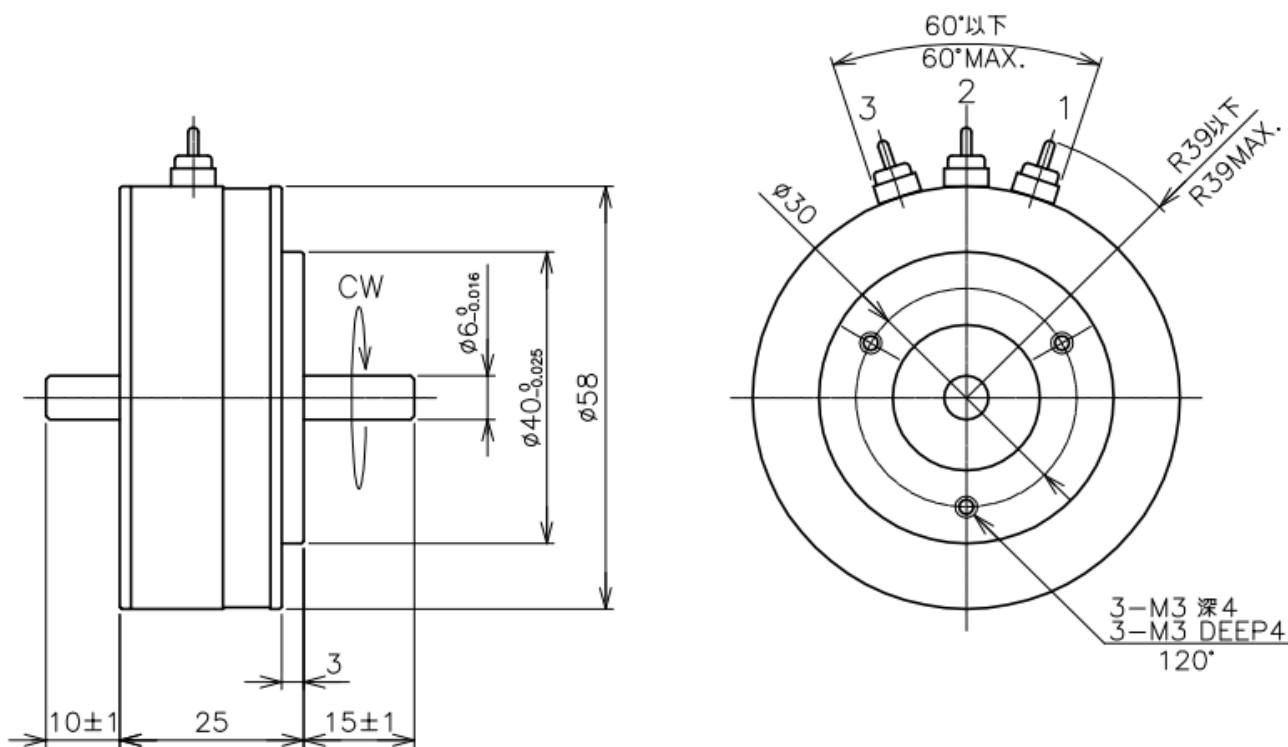


- Wire Wound Angle Sensor
- Effective Electrical Travel: 355°(MIN. 1kΩ)/350°(Less than 1kΩ)
- Independent Linearity : ±0.15%(MIN. 200Ω)/±0.2%(Less than 200Ω)
- Screw Mount

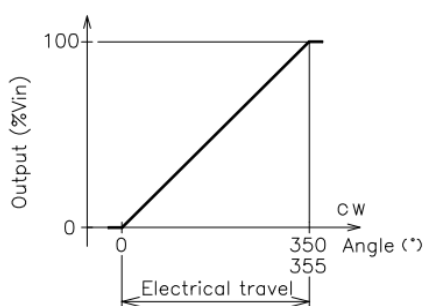
【Material】

- Housing : Aluminum
- Shaft : Stainless Steel
- Bearing : Stainless steel

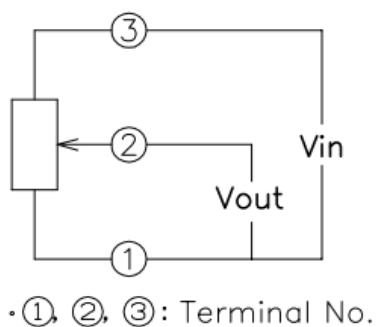
Dimension [mm]



Output Characteristics

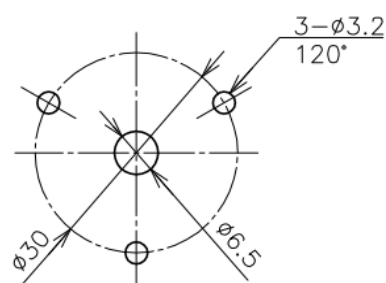


Schematic



• ①, ②, ③: Terminal No.

Mounting



【Model No.】	CP-6
--------------------	-------------

【Total Resistance】		
Total Resistance	Resolution	Input Voltage
0.1kΩ	0.12%	15V(40°C)
0.2kΩ	0.10%	20V(40°C)
0.5kΩ	0.07%	30V(40°C)
1kΩ	0.06%	40V(40°C)
2kΩ	0.06%	60V(40°C)
5kΩ	0.045%	100V(40°C)
10kΩ	0.035%	150V(40°C)
20kΩ	0.031%	200V(40°C)
30kΩ	0.027%	200V(40°C)

【Electrical Data】		
Effective Electrical Travel	355 +1, -2(MIN. 1kΩ) 350 +2, -3(Less than 1kΩ)	°
Total Resistance Tolerance	±5	%
Independent Linearity	±0.15(MIN. 200Ω) ±0.2(Less than 200Ω)	%
Rated Dissipation	2.5(40°C)	W
Insulation Resistance	MIN. 100/DC1000V	MΩ
Dielectric Strength	AC1000/1 Minute	V
Temperature Coefficient of Resistance	±20	ppm/K

【Mechanical Specifications】		
Total Mechanical Travel	360 Endless	°
Torque	MAX. 3(MIN. 1kΩ) MAX. 4(Less than 1kΩ)	mN·m
Thrust Load Tolerance	5	N
Radial Load Tolerance	12	N
Mass	110 Approx.	g