

Conductive Plastic Angle Sensor

CP-2FABSJ Series

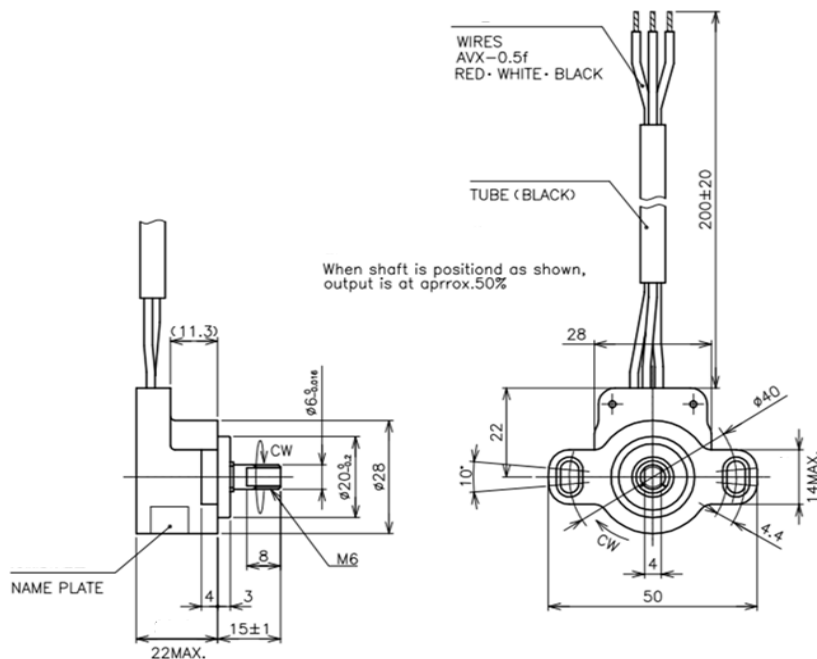


- Conductive Plastic Angle Sensor
- Effective Electrical Travel : 90°
- Independent Linearity : ±3%
- with Return Spring (Spring Return Direction: CW)
- IP 65

[Material]

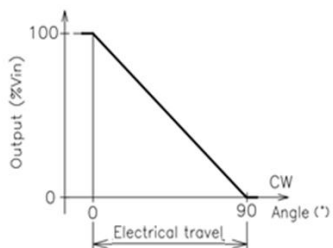
- Housing : PBT
- Shaft : Stainless Steel
- Bearing : Copper Alloy

■ Dimension (mm)

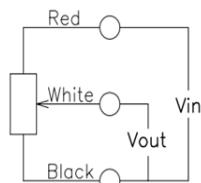


* Spring return direction : CW

■ Output Characteristics



■ Schematic



• Red, White, Black indicate wire colors.

■ Mounting

