



Features

- Carbon element
- Red, orange and green LED colors
- Center detent option
- Assortment of resistance tapers
- Various travel lengths
- Various lever sizes

Applications

- Mixing consoles
- Drum machines
- Keyboards and synthesizers
- Equalizers

PTL Series Slide Potentiometer w/LED

Electrical Characteristics

Standard Resistance Range1K ohms to 1 megohm
 Standard Resistance Tolerance±20 %
 End Resistance
 20 mm Travel10 ohms max.
 30 mm Travel20 ohms max.
 45 mm Travel20 ohms max.
 60 mm Travel30 ohms max.
 Insulation Resistance @ 250 VDC
100 megohms min.
 Dielectric Withstanding Voltage
300 VAC
 Standard Taper.....Linear, Audio
 Power Rating - Linear
 20 mm Travel0.05 watt
 30 mm Travel0.1 watt
 45 mm Travel0.125 watt
 60 mm Travel0.2 watt
 Power Rating - Audio
 20 mm Travel0.025 watt
 30 mm Travel0.05 watt
 45 mm Travel0.06 watt
 60 mm Travel0.1 watt
 Slider Noise200 mV max.

Environmental Characteristics

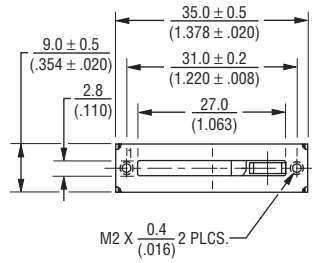
Operational Life.....15,000 cycles
 TR Shift.....±15 %
 Operating Temperature Range
-10 °C to +55 °C
 Resistance to Solder Heat±5 %

Mechanical Characteristics

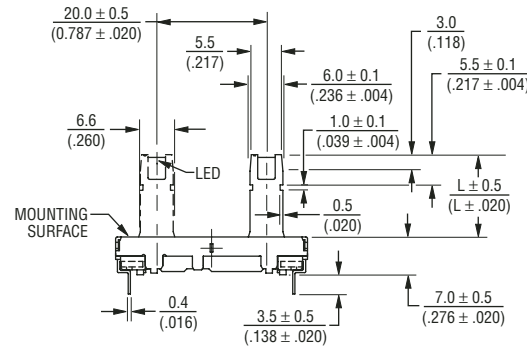
Mechanical Travel.....Length ±0.5 mm
 Operating Force.....30 gf to 250 gf
 Center Detent Force20 gf to 200 gf
 Stop Strength5 kgf min.
 Shaft Axial Force.....5 kgf min.
 Shaft Wobble....2(2 x L/20) mm p-p max.
 Soldering Condition
 Manual.....300 °C ±5 °C for 3 sec.
 Wave260 °C ±5 °C for 5 sec.
 WashNot recommended

Product Dimensions

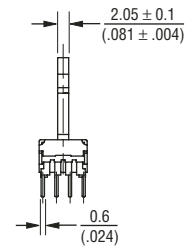
20 mm Length of Travel



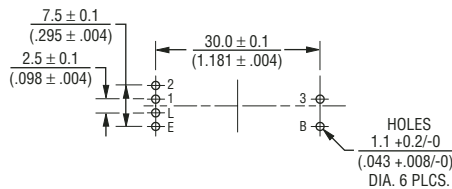
Lever Length
10.0 (.394)
15.0 (.591)
19.0 (.748)



DIMENSIONS: $\frac{MM}{(INCHES)}$



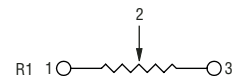
Mounting Hole Detail



Standard Resistance Table

Resistance (Ohms)	Resistance Code
1,000	102
2,000	202
5,000	502
10,000	103
20,000	203
50,000	503
100,000	104
200,000	204
500,000	504
1,000,000	105

Schematic



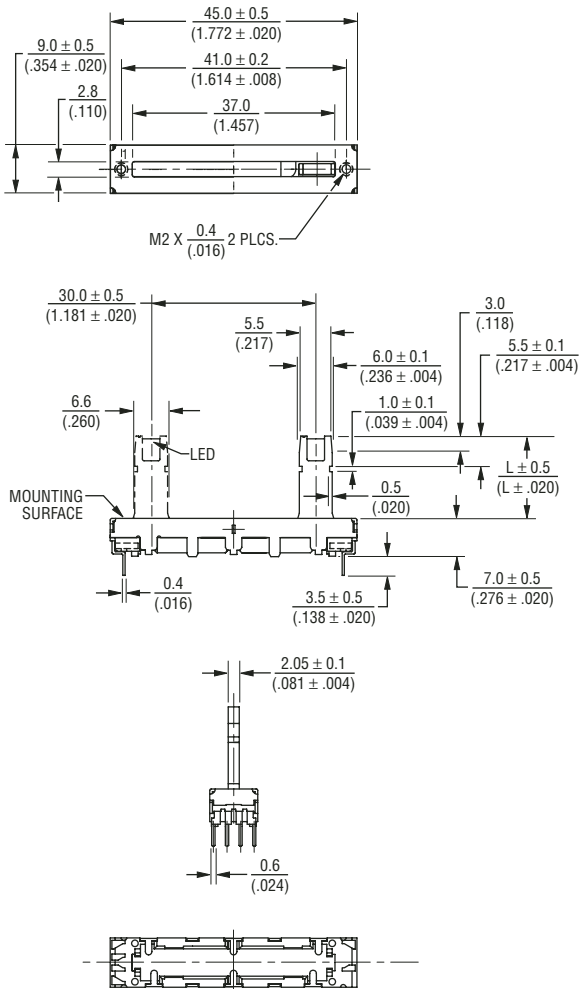
*RoHS Directive 2002/95/EC Jan 27 2003 including Annex. Specifications are subject to change without notice. Customers should verify actual device performance in their specific applications.

PTL Series Slide Potentiometer w/LED

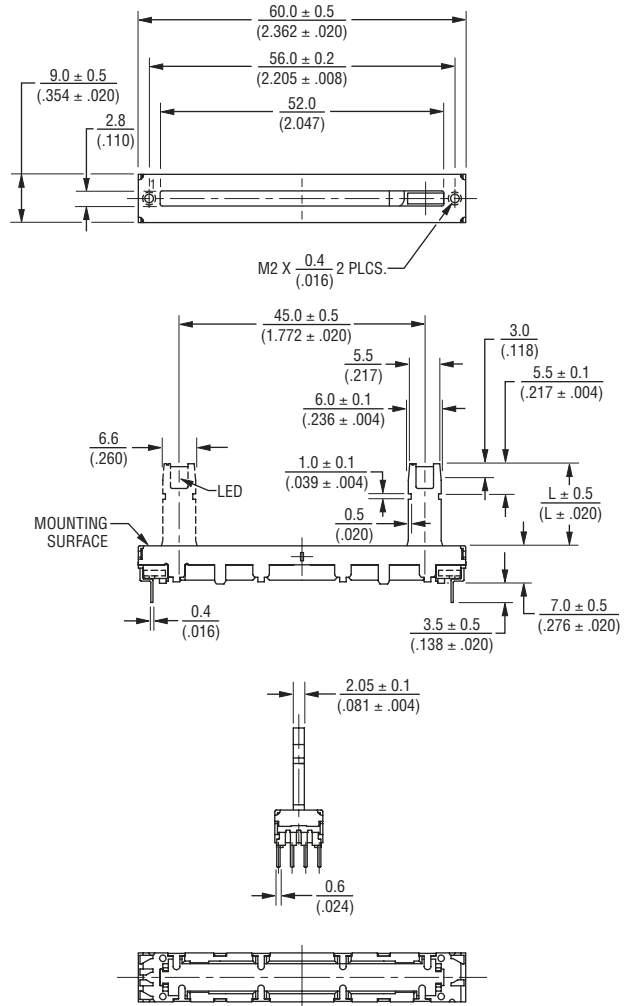
BOURNS®

Product Dimensions

30 mm Length of Travel



45 mm Length of Travel



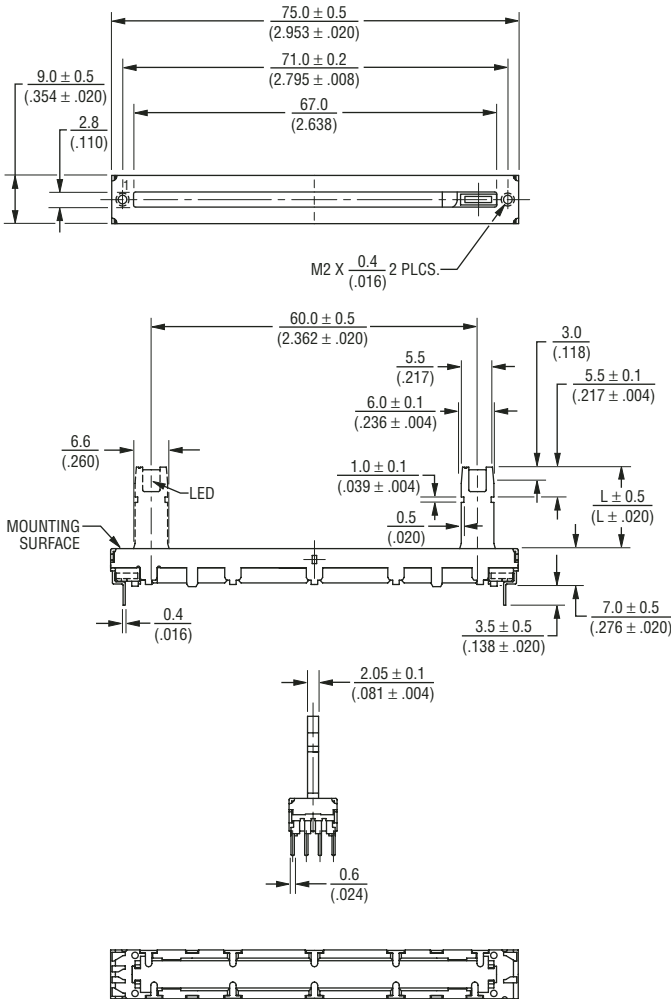
Specifications are subject to change without notice. Customers should verify actual device performance in their specific applications.

PTL Series Slide Potentiometer w/LED

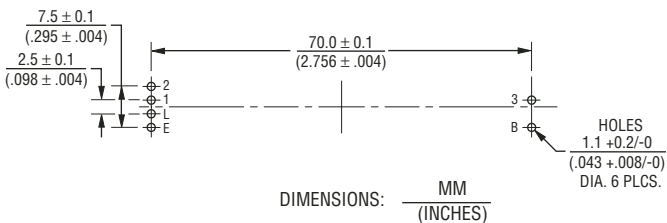
BOURNS®

Product Dimensions

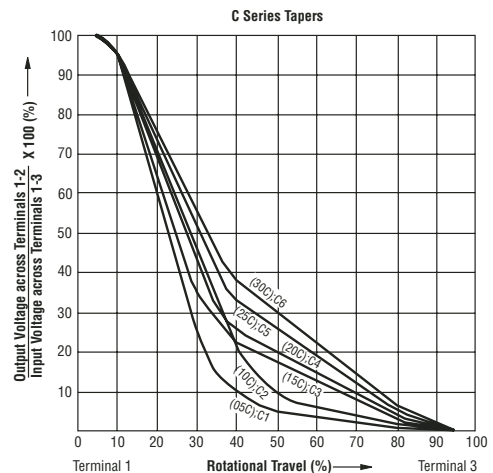
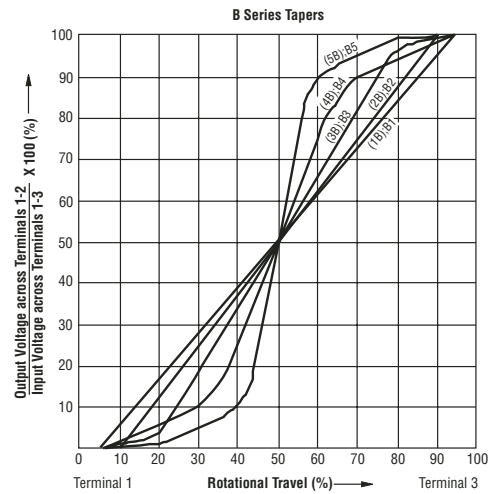
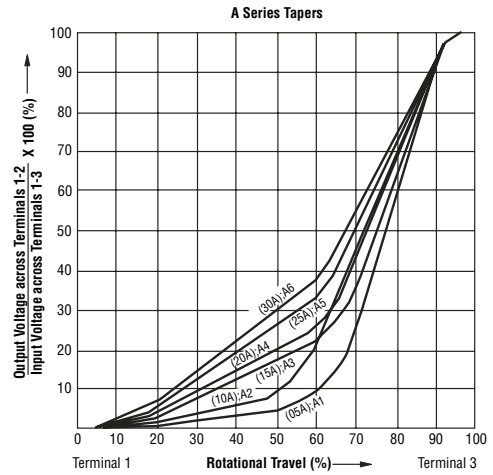
60 mm Length of Travel



Mounting Hole Detail



Tapers



Specifications are subject to change without notice.
Customers should verify actual device performance in their specific applications.

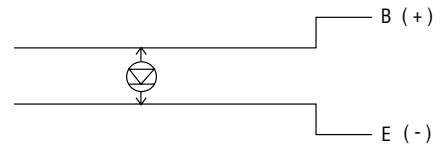
PTL Series Slide Potentiometer w/LED

BOURNS®

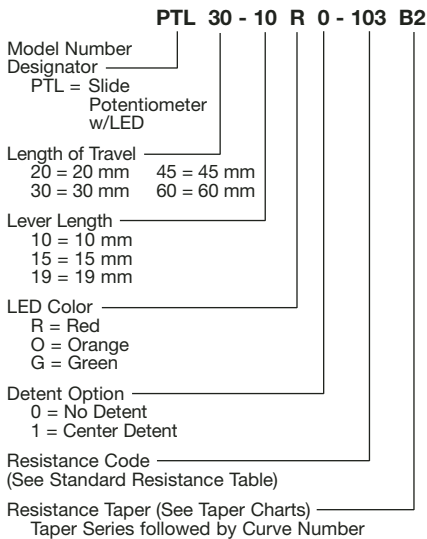
L.E.D. Characteristics

Emitted Color	Item	Symbol	Test	Min.	Typ.	Max.	Unit
			Conditions				
Red (Red Clear)	Forward Voltage	VF	IF = 10 mA	0.3	2.1	2.5	V
	Luminous Intensity	IV	IF = 10 mA				
Orange (Orange Clear)	Forward Voltage	VF	IF = 20 mA	1.5	3.0	2.5	V
	Luminous Intensity	IV	IF = 20 mA				
Green (Green Clear)	Forward Voltage	VF	IF = 20 mA	0.6	1.2	2.5	V
	Luminous Intensity	IV	IF = 20 mA				

Circuit



How To Order



Sensors & Controls Division

Asia-Pacific:

TEL +886-2 25624117
 FAX +886-2 25624116

Europe:

TEL +41-41 7685555
 FAX +41-41 7685510

The Americas:

TEL +1-951 781-5500
 FAX +1-951 781-5700

www.bourns.com