

REFERENCE: MPCL DWG B-MPD-B74

REVISION

C.O.N	SYM	DESCRIPTION	DATE	DRAWN	APPR'D
B		1) FIGURE 2: RED ---- BLACK WAS BLACK ---- RED(DWG ERROR CORRECTION)	7/23/97	TSUGAWA	NAKAMURA
C		1) PRODUCT "LP-50F-63" ADDED.	10/26/98	TSUGAWA	NAKAMURA
D		1) WAS "26".	6/24/99	T.TSUGAWA	
E		1) TOLERANCE FOR MECHANICAL STROKE WAS ±1 mm .	02/05/03	T.TSUGAWA	
F		1) RESISTANCE VALUE, 0.5k AND 30k REMOVED AND 20k WAS STD. 2) WAS -40°C to +125°C (3) WAS 100 gm MAX. (4) WAS 26±0.5	08/10/03	T.TSUGAWA	

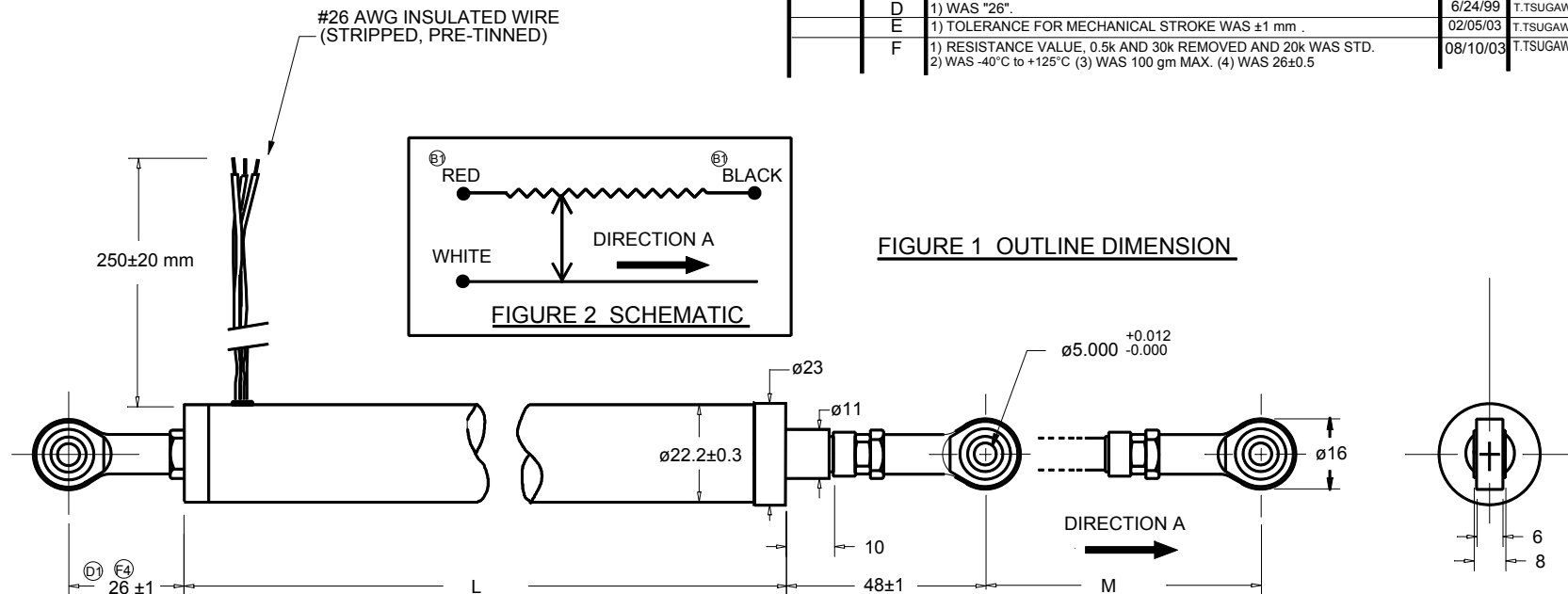


FIGURE 1 OUTLINE DIMENSION

SPECIFICATIONS

MODEL NO.:	<sup>Ⓒ1</sup> LP-50F-63	LP-100F-63	LP-150F-63	LP-200F-63	LP-250F-63	LP-300F-63	LP-400F-63
ELECTRICAL STROKE:	50 mm	100 mm	150 mm	200 mm	250 mm	300 mm	400 mm
MECH. STROKE ( M ): <sup>Ⓒ2</sup>	53 ±2 mm	103 ±2 mm	153 ±2 mm	203 ±2 mm	253 ±2 mm	303 ±2 mm	403 ±2 mm
<sup>Ⓒ3</sup> RESISTANCE in KOHMS (±20%):	1, 2, 5	1, 2, 5, 10	1, 2, 5, 10	1, 2, 5, 10 (20 AVAILABLE)	2, 5, 10 (20 AVAILABLE)	2, 5, 10 (20 AVAILABLE)	5, 10
POWER RATING:	1.5 W @ 70°C	2.5 W @ 70°C	3 W @ 70°C	4 W @ 70°C	4 W @ 70°C	4 W @ 70°C	4.5 W @ 70°C
HOUSING LENGTH ( L ):	95 ±1 mm	145 ±1mm	195 ±1mm	245 ±1mm	295 ±1mm	345 ±1mm	445 ±1mm
INDEPENDENT LINEARITY:	±0.5% (±0.2% AVAILABLE)	±0.3% (±0.1% AVAILABLE)	±0.3% (±0.1% AVAILABLE)	±0.3% (±0.1% AVAILABLE)	±0.3% (±0.1% AVAILABLE)	±0.3% (±0.1% AVAILABLE)	±0.1%
OUTPUT SMOOTHNESS:	0.1% MAX.						
INSULATION RESISTANCE:	100 meg OHMS MIN. @ 500 Vdc						
DIELECTRIC STRENGTH:	500 Vrms @ 50/60 Hz for 1 MINUTE						
OPERATING TEMPERATURE:	<sup>Ⓒ2</sup> -40°C to +80°C						
TEMPERATURE COEFFICIENT:	±400 ppm/°C MAX.						
FRICITION:	<sup>Ⓒ3</sup> 200 gf MAX.						

UNLESS OTHERWISE SPECIFIED, DIMENSIONS ARE IN mm(in). TOLERANCES: ANGLES: ±1.5° <10 mm: ±0.25 <100 mm: ±0.5 >100 mm: ±1	DRAWN T. TSUGAWA	DATE 11/28/95	SPECIFICATION DWG FOR MODEL LP-xxxF-63  LINEAR POTENTIOMETER SPHERICAL ROD ENDS	A-MAC-B77   F	
	CHECKED Y. NAKAMURA	DATE 11/29/95			
	APPROVED I. SOMA	DATE 11/29/95			
	APPROVED	DATE			
SCALE:	FILE: LP-xxxF-63		1 OF 1		