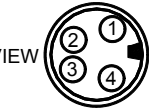


REFERENCE: MPCL DWG B-MPD-B74

CONNECTOR TERMINAL I.D.

TOP VIEW



CONNECTOR:  
BINDER P/N 09-0309-00-04

MATING CONNECTOR, BINDER  
P/N 09-310-00-04 TO BE  
SUPPLIED WITH UNIT.

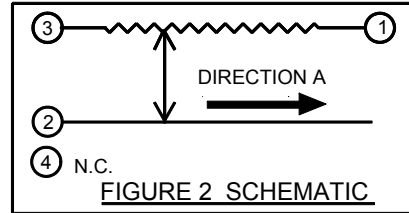
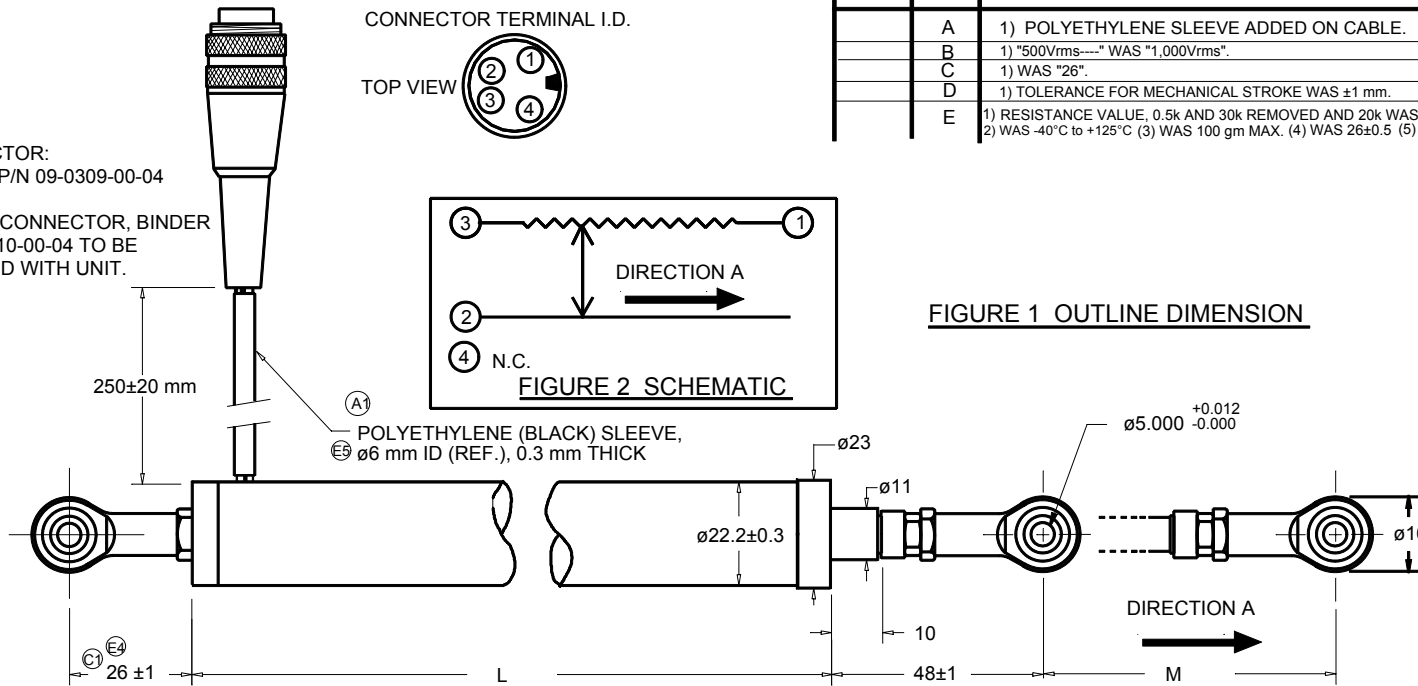


FIGURE 1 OUTLINE DIMENSION

**SPECIFICATIONS**

MODEL NO.:	LP-100F -62	LP-150F -62	LP-200F -62	LP-250F-62	LP-300F -62	LP-400F-62
ELECTRICAL STROKE :	100 mm	150 mm	200 mm	250 mm	300 mm	400 mm
MECH. STROKE ( M ): ①	103 ±2 mm	153 ±2 mm	203 ±2 mm	253 ±2 mm	303 ±2 mm	403 ±2 mm
③ RESISTANCE in KOHMS (±20%):	1, 2, 5, 10	1, 2, 5, 10	1, 2, 5, 10 (20 AVAILABLE)	2, 5, 10 (20 AVAILABLE)	2, 5, 10 (20 AVAILABLE)	5, 10
POWER RATING:	2.5 W @ 70°C	3 W @ 70°C	4 W @ 70°C	4 W @ 70°C	4 W @ 70°C	4.5 W @ 70°C
HOUSING LENGTH ( L ):	145 ±1mm	195 ±1mm	245 ±1mm	295 ±1mm	345 ±1mm	445 ±1mm
INDEPENDENT LINEARITY:	±0.3% (±0.1% AVAILABLE)	±0.3% (±0.1% AVAILABLE)	±0.3% (±0.1% AVAILABLE)	±0.3% (±0.1% AVAILABLE)	±0.3% (±0.1% AVAILABLE)	±0.1%
OUTPUT SMOOTHNESS:	0.1% MAX.					
INSULATION RESISTANCE:	100 meg OHMS MIN. @ 500 Vdc					
DIELECTRIC STRENGTH:	⑧1 500 Vrms @ 50/60 Hz for 1 MINUTE					
OPERATING TEMPERATURE:	⑧2 -40°C to +80°C					
TEMPERATURE COEFFICIENT:	±400 ppm/°C MAX.					
FRICTION:	⑧3 200 gf MAX.					

UNLESS OTHERWISE SPECIFIED, DIMENSIONS ARE IN mm(in).  TOLERANCES: ANGLES: ±1.5° <10 mm: ±0.25 <100 mm: ±0.5 >100 mm: ±1	DRAWN T. TSUGAWA	DATE 11/15/95	SPECIFICATION DWG FOR MODEL LP-XXXXF-62 LINEAR POTENTIOMETER SPHERICAL ROD ENDS	A-MAC-B76	E
	CHECKED Y. NAKAMURA	DATE 11/28/95			
	APPROVED I. SOMA	DATE 11/28/95			
	APPROVED	DATE			
SCALE:	FILE: LP-XXXXF-62		1 OF 1		

REVISION					
C.O.N	SYM	DESCRIPTION	DATE	DRAWN	APPR'D
	A	1) POLYETHYLENE SLEEVE ADDED ON CABLE.	3/22/96	T.TSUGAWA	Y.NAKAMURA
	B	1) "500Vrms----" WAS "1,000Vrms".	9/25/96	T.TSUGAWA	Y.NAKAMURA
	C	1) WAS "26".	6/24/99	T.TSUGAWA	
	D	1) TOLERANCE FOR MECHANICAL STROKE WAS ±1 mm.	02/02/03	T.TSUGAWA	
	E	1) RESISTANCE VALUE, 0.5k AND 30k REMOVED AND 20k WAS STD. 2) WAS -40°C to +125°C (3) WAS 100 gm MAX. (4) WAS 26±0.5 (5) WAS ø3.8mm	08/10/03	T.TSUGAWA	