

REF. NO:

REVISION					
C.O.N	SYM	DESCRIPTION	DATE	DRAWN	APPR'D
	A	1) "(±0.5% AVAILABLE)" ADDED.	8/19/04	TSUGAWA	
	B	1) ADDED M3 MOUNTING HOLES IN 6 PLCS. 2) "ITS CONDUCTIVE PLASTIC ----" WAS "ITS CO-MOLDED----"	10/14/06	TSUGAWA	

GENERAL:
 MODEL LP-10FB IS A 10 mm STROKE CONDUCTIVE PLASTIC, LINEAR MOTION POTENTIOMETER, WITH A RETURN SPRING.
 ⓑ ITS CONDUCTIVE PLASTIC ELEMENT, UNIQUE DESIGN AND PRECISION CONSTRUCTION ALLOW THE UNIT TO FEATURE SUPERB OUTPUT SMOOTHNESS AND LONG OPERATING LIFE.

ELECTRICAL SPECIFICATIONS:

ELECTRICAL STROKE: 10 mm (F.S.)
 TOTAL RESISTANCE: 0.1, 0.2, 0.5, 1, 2 KOHMS
 TOTAL RESIS. TOLERANCE: ±20%
 LINEARITY (INDEPENDENT): ±1% (±0.5% AVAILABLE) ⓐ
 REPEATABILITY: 0.03%
 POWER RATING: 0.3 WATTS @70°C
 INSULATION RESISTANCE: 500 meg OHMS MIN. @ 500 Vdc
 DIELECTRIC STRENGTH: 500 Vrms, 50/60Hz, FOR 1MINUTE
 RESISTANCE TEMP. COEFFECIENT: 400 ppm/°C

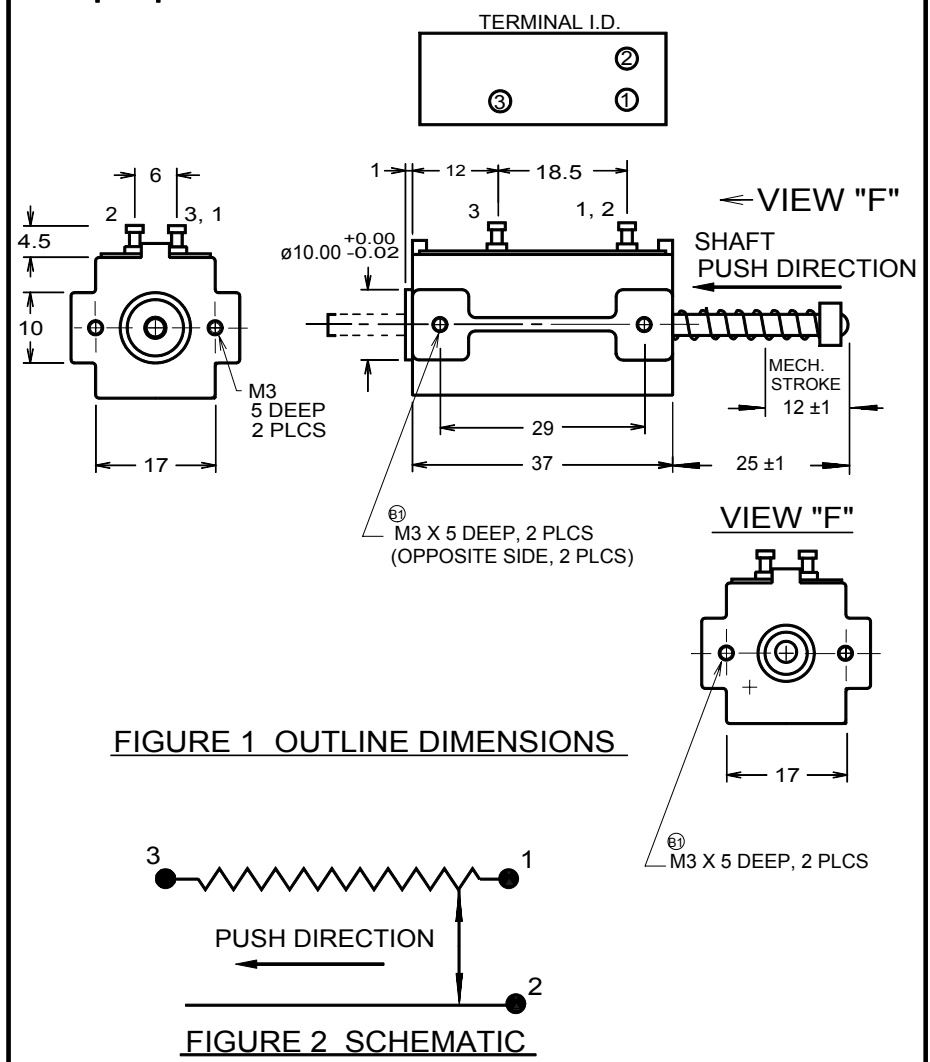
MECHANICAL STROKE:

MECHANICAL STROKE: 12 mm
 FRICTION (SPRING FORCE): 120 gf
 WEIGHT: APPROX. 60 g

ENVIRONMENTAL SPECIFICATIONS:

OPERATING TEMPERATURE: -40°C to +100°C
 VIBRATION: 10 Gs, 500 Hz
 SHOCK: 50 Gs, 11 ms
 LIFE: 5 MILLION CYCLES MIN.

MOUNTING HOLES: REFER TO FIGURE 1



UNLESS OTHERWISE SPECIFIED, DIMENSIONS ARE IN mm(in). TOLERANCES: ANGLES: ±1.5° ≤10 mm: ±0.25 <100 mm: ±0.5 ≥100 mm: ±1	DRAWN T.TSUGAWA	DATE 12/16/94	SPECIFICATION DWG FOR MODEL LP-10FB LINEAR MOTION POT. (WITH RETURN SPRING)	Midori America Corporation FULLERTON, CA	
	CHECKED	DATE			
	APPROVED	DATE		A-MAC-B57	B
	APPROVED	DATE			
	SCALE:	FILE: LP-10FB		1 OF 1	