

REF. NO:

REVISION					
C.O.N	SYM	DESCRIPTION	DATE	DRAWN	APPR'D
	A	1) "(±0.5% AVAILABLE)" ADDED.	8/19/04	TSUGAWA	
	B	1) ADDED M3 MOUNTING HOLES IN 6 PLCS. 2) "ITS CONDUCTIVE PLASTIC ---" WAS "ITS COMOLDED---"	10/14/06	TSUGAWA	

GENERAL:

MODEL LP-10F IS A 10 mm STROKE CONDUCTIVE PLASTIC, LINEAR MOTION POTENTIOMETER OF WHICH PERFORMANCE IS UNAFFECTED BY SHAFT ROTATION. [Ⓜ]ITS CONDUCTIVE PLASTIC ELEMENT AND PRECISION CONSTRUCTION ALLOW THE UNIT TO FEATURE LOW TORQUE, SUPERB OUTPUT SMOOTHNESS AND LONG OPERATING LIFE.

ELECTRICAL SPECIFICATIONS:

ELECTRICAL STROKE:	10 mm (F.S.)
TOTAL RESISTANCE:	0.1, 0.2, 0.5, 1, 2 KOHMS
TOTAL RESIS. TOLERANCE:	±20%
LINEARITY (INDEPENDENT):	±1% (±0.5% AVAILABLE) [Ⓐ]
REPEATABILITY:	±0.03%
POWER RATING:	0.3 WATTS @70°C
INSULATION RESISTANCE:	500 meg OHMS MIN. @ 500 Vdc
DIELECTRIC STRENGTH:	500 Vrms, 50/60Hz, FOR 1MINUTE
RESISTANCE TEMP. COEFFECIENT:	400 ppm/°C

MECHANICAL STROKE:

MECHANICAL STROKE:	12 mm
FRICTION:	29 gf MAX.
WEIGHT:	APPROX. 60 g

ENVIRONMENTAL SPECIFICATIONS:

OPERATING TEMPERATURE:	-40°C to +100°C
VIBRATION:	10 Gs, 500 Hz
SHOCK :	50 Gs, 11 mS
LIFE:	5 MILLION CYCLES MIN.

MOUNTING HOLES: REFER TO FIGURE 1

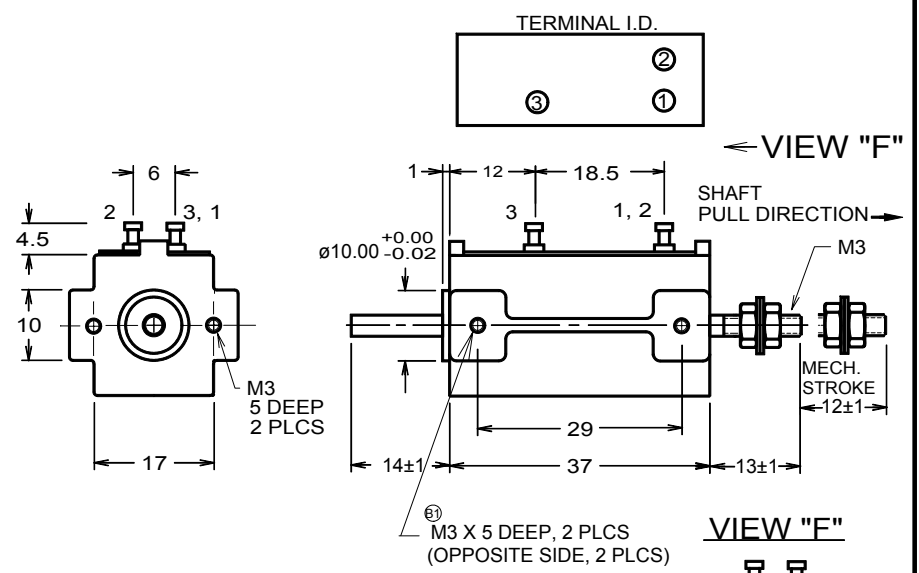


FIGURE 1 OUTLINE DIMENSIONS

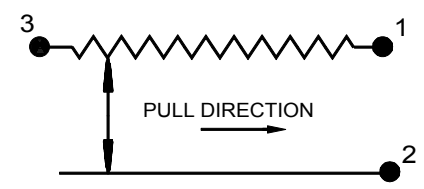


FIGURE 2 SCHEMATIC

UNLESS OTHERWISE SPECIFIED, DIMENSIONS ARE IN mm(in). TOLERANCES: ANGLES: ±1.5° ≤10 mm: ±0.25 <100 mm: ±0.5 ≥100 mm: ±1	DRAWN T.TSUGAWA	DATE 12/16/94	SPECIFICATION DWG FOR MODEL LP-10F LINEAR MOTION POTENTIOMETER	Midori America Corporation <small>FULLERTON, CA</small>	
	CHECKED	DATE			
	APPROVED	DATE		A-MAC-B56	B
	APPROVED	DATE			
	SCALE:	FILE: LP-10F		1 OF 1	