



## Boost your HDMI

### HDMI Super Booster PLUS

#### Extend the range of your copper HDMI cables -- up to 200 feet!

The new Gefen HDMI Super Booster Plus allows you to extend the reach of copper HDMI cables up to 200 feet from the video source, while fully supporting High-Definition display protocols to insure maximum compatibility with the way that high-definition signals are encoded today and in the future.

With the new Plus model, improved DDC signal robustness is added, giving robustness to electrical signals that negotiate delicate resolution and frequency settings, for even greater precision than ever before.

#### How It Works

Simply attach your long HDMI extension cable to your video source, then place the HDMI Super Booster Plus on the other end near the monitor. Attach the monitor's video cable to the other side of the Booster and power-cycle all your equipment including video source and display. You should then see a beautiful HDMI picture at the remote display as if it was right at the local video source.

**Note:** This device fully passes HDCP.

#### Features:

- Fully HDCP and HDMI compliant
- Compact, portable device
- Wall-powered for extra amplification power
- Based on proven Gefen Super Booster technology

#### Specifications:

- Video Amplifier Bandwidth: 165 MHz
- Input Video Signal: 1.2 volts p-p
- Input DDC Signal: 5 volts p-p (TTL)
- Single Link Range: 1080p/1920 x 1200
- HDMI™ Connector: type A 19 pin female
- Dimensions: 1.6"W x 1.1"H x 1.8"D
- Shipping Weight: 1 lb.

#### Package Includes:

- HDMI Super Booster device
- 5V DC Power Supply
- User's Guide



EXT-HDMI-141SBP

# Gefen

## HDMI Super Booster Plus USER MANUAL



[www.gefen.com](http://www.gefen.com)

## ASKING FOR ASSISTANCE

---

**Technical Support:**

Telephone (818) 772-9100  
(800) 545-6900

Fax (818) 772-9120

**Technical Support Hours:**

8:00 AM to 5:00 PM Monday thru Friday.

**Write To:**

Gefen Inc.  
C/O Customer Service  
20600 Nordhoff St.  
Chatsworth, CA 91311

support@gefen.com  
www.gefen.com

**Notice**

Gefen Inc. reserves the right to make changes in the hardware, packaging and any accompanying documentation without prior written notice.

**The HDMI Super Booster Plus** is a trademark of Gefen Inc.

© 2008 Gefen Inc., All Rights Reserved

## TABLE OF CONTENTS

---

- 1 Introduction
- 2 Features
- 3 Panel Descriptions
- 4 Connecting and Operating the HDMI Super Booster Plus
- 5 Auto Equalization
- 6 Specifications
- 7 Warranty

## INTRODUCTION

---

The Gefen HDMI Super Booster Plus is an attractive alternative to the traditional sender/receiver solutions for HD extension. The HDMI Super Booster Plus enables your standard “off the shelf” HDMI cable to transmit HDTV video plus multichannel digital audio in a single cable way beyond the limited HDMI specification of 15-feet.

Up to 200 feet can be easily traversed using your HDMI cable plus a HDMI Super Booster Plus. The HDMI Super Booster Plus corrects any digital degradation that occurs when HDMI is used to send digital audio/video signals beyond the HDMI specification of 15 feet.

### How It Works

This plug and play installation takes mere seconds. You simply connect the HDMI cable on one side of the HDMI Super Booster Plus and the display’s cable on the other side. The HDMI Super Booster Plus sits between the end of your HDMI cable and your display. You also have the option of connecting another HDMI cable to the Booster, daisy chaining Boosters and cables for greater distances.

# FEATURES

---

## Features

- Perfect digital high definition video sent over long stretches of HDMI cables
- Locate an HDMI display up to 200 feet away from any HDTV source
- Supports resolutions up to 1080p, 2K, and 1920 x 1200
- HDMI/HDCP compliant

## Includes:

- (1) HDMI Super Booster Plus
- (1) 5V DC Power Supply
- (1) User's Manual

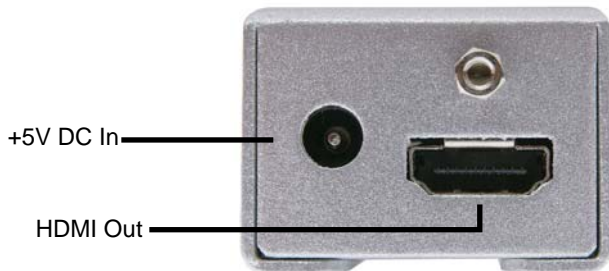
## PANEL LAYOUT

---

### Front Panel



### Back Panel



## CONNECTING AND OPERATING THE HDMI SUPER BOOSTER PLUS

---

1. Connect the long HDMI cable from the source into the “HDMI In” on the front of the HDMI Super Booster Plus. The HDMI Super Booster Plus is placed next to your display to regenerate the HDMI signal.
2. Connect a short HDMI cable from the “HDMI Out” connection in the back of the HDMI Super Booster Plus to your display or projector
3. Plug the 5V DC power supply into the HDMI Super Booster Plus.
4. Plug the 5VDC wall mount power supply into the wall outlet.

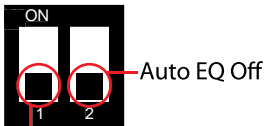
### **Manual Equalization**

By default, the HDMI Super Booster Plus is set to manual equalization. The service Dip Switch 2, located on the underside of the unit behind a silver colored metallic sticker, must be in the OFF position for manual EQ to be enabled. Dip Switch 1 relates to manual EQ short and long cable settings. By default, Dip Switch 1 is in the long cable mode (OFF). Adjust the EQ Trim Pot on the front of the unit to eliminate video noise by inserting a small flat-head tool into the Trim Pot port. Turn the Trim Pot in very small increments to EQ the video signal until all video noise is eliminated. If a short cable is being used and there is either video noise that cannot be tuned out or no image at all in the long cable mode, change the manual EQ setting to short cable mode by turning Dip Switch 1 to the ON position. Re-insert the adjustment tool and EQ the video signal. Use the diagram on the next page to locate and view the location and settings of the Dip Switches.



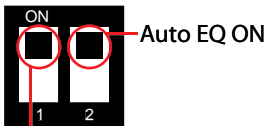
## AUTO EQUALIZATION

---



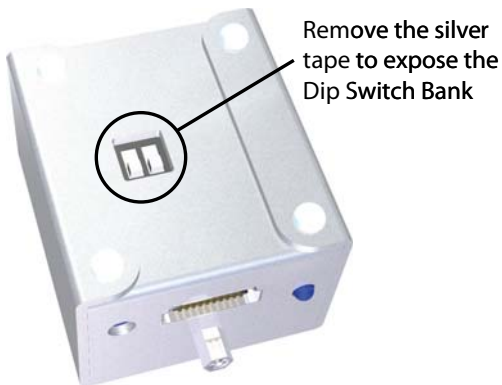
Auto EQ Off

Manual EQ Long Cable



Auto EQ ON

Manual EQ Short Cable



Remove the silver tape to expose the Dip Switch Bank

Dip Switch 2 can be used to turn on the automatic equalization function. Use this setting for ease of setup as this mode will automatically tune out unwanted video noise. To do this, turn Dip Switch 2 to the ON position. No manual adjustments to the EQ can be made in this mode using the EQ Trim Pot on the front of the unit. Dip Switch 1 will not have any effect in this mode. If video noise is still present in automatic EQ mode, return to manual EQ mode by turning Dip Switch 2 to the OFF position and manually tune the signal using the instructions on the previous page.

## SPECIFICATIONS

---

Video Amplifier Bandwidth .....	165 MHz
Input Video Signal .....	1.2 Volts p-p
Input DDC Signal .....	5 Volts p-p (TTL)
Maximum Single Link Range .....	1920 x 1200 x 60hz
HDMI Input/Output Connector Type .....	HDMI Type A
Power Consumption .....	5 Watts (max)
Power Supply.....	5V DC
Dimensions .....	1.75"W x 1"H x 2.25"D
Shipping Weight .....	2 Lbs