



Distribute single link DVI to 2 displays

Optional Accessories



DVI Cables

1:2 DVI SL Splitter

Allows computers with DVI output to be connected to two or more DVI displays.

The 1:2 DVI SL Splitter allows computers with DVI output to be connected to two or more DVI displays at the same time. It is a flexible distribution hub that can accommodate multiple displays when two or more 1:2 DVI SL Splitter are connected together to create a greater distribution.

How It Works

The 1:2 DVI SL Splitter is connected with a DVI cable from the DVI source to the 1:2 DVI SL Splitter input. There are two DVI outputs. DVI output 1 is the primary connection and is used for the main display. DVI output 2 follows the main display.

Note: Only output #1 of the 1:2 DVI SL Splitter is HDCP pass-through.

A connected display that cannot show the same video resolution(s) as the Primary Display connected to Output #1 may fail to show a picture. Secondary displays follow the Primary by sharing the resolution and capability information (EDID) obtained from the Primary Display.

Please use The [HDMI Splitter](#) if you require two HDCP compliant outputs.

[DVI, HDCP & HDMI Defined](#)

Features:

- Splits the DVI signal to two or more displays
- Connects two or more displays at the same time to the same video source
- Uses high quality DVI cables for connections
- Allows simultaneous display
- Supports resolutions up to 1080p, 2K, and 1920 x 1200
- Supports HDCP passthrough for output one
- Supports DDWG standard for DVI compliant monitors

Specifications:

- Video Amplifier Bandwidth: 165 MHz
- Input Video Signal: 1.2 volts p-p
- Input DDC Signal: 5 volts p-p (TTL)
- Single Link Range: 1080p/1920 x 1200
- DVI Connector: DVI-I 29 pin female (digital only)
- Power Consumption: 15 watts (max.)
- Power Supply: 5V DC
- Dimensions: 4"W x 1"H x 3.25"D
- Shipping Weight: 2 lbs.

Package Includes:

- The 1:2 DVI SL Splitter
- One 5V DC Power Supply
- One 6ft DVI cable



EXT-DVI-142SL



1:2 DVI SL Splitter
USER MANUAL

ASKING FOR ASSISTANCE

Technical Support:

Telephone (818) 772-9100
(800) 545-6900

Fax (818) 772-9120

Technical Support Hours:

8:00 AM to 5:00 PM Monday through Friday PST

Write To:

Gefen Inc.
C/O Customer Service
20600 Nordhoff St
Chatsworth, CA 91311

support@gefen.com
www.gefen.com

Notice

Gefen Inc. reserves the right to make changes in the hardware, packaging and any accompanying documentation without prior written notice.

1:2 1:2 DVI SL Splitter is a trademark of Gefen Inc.

TABLE OF CONTENTS

- 1** Introduction
- 2** Features
- 3** Panel Descriptions
- 4** Connecting and Operating the 1:2 DVI SL Splitter
- 5** Specifications
- 6** Warranty
- 7** Troubleshooting

INTRODUCTION

Congratulations on your purchase of the 1:2 DVI SL Splitter. Your complete satisfaction is very important to us.

Gefen's line of KVM (Keyboard Video & Mouse), DVI, ADC, USB, switches, extenders, converters and hubs is designed to make computer use more comfortable, more productive and less expensive.

KVM switches allow access to multiple computers from a single keyboard, while the extenders give the user control over a computer up to 330 feet away from the work area.

The line offers solutions for noise, space and security concerns, data center control, information distribution, conference room presentation, and school and corporate training environments.

The 1:2 DVI SL Splitter allows computers with Single Link DVI graphic cards to be connected to one or two Single Link DVI compatible monitors or projectors.

The 1:2 DVI SL Splitter also lets you keep your Single Link DVI monitor next to your computer, while adding a second Single Link DVI display such as a projector or another Single Link DVI monitor.

Our Commitment

Gefen will always offer the finest quality product at the best possible price. Included in that price is a lifetime of support from a team of outstanding engineers.

FEATURES

Features

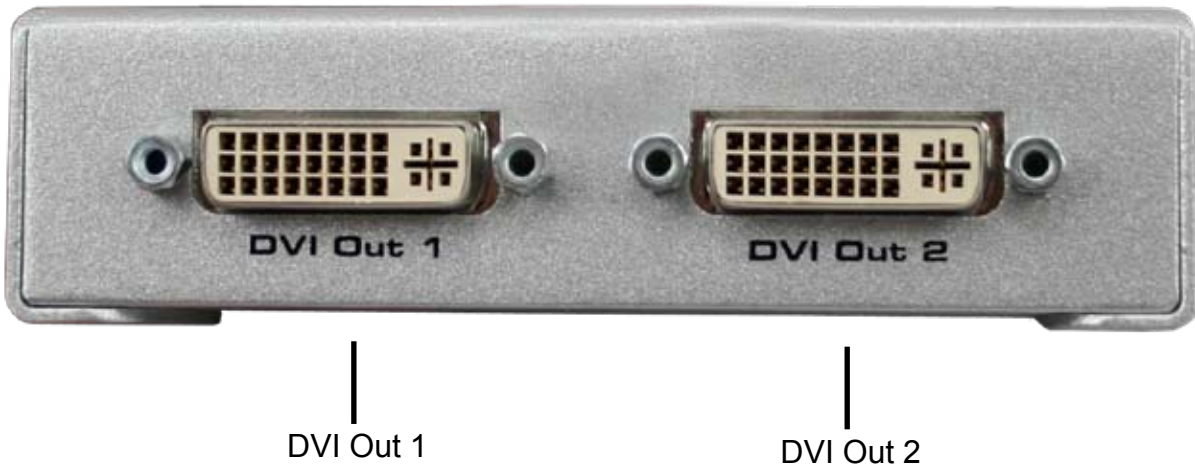
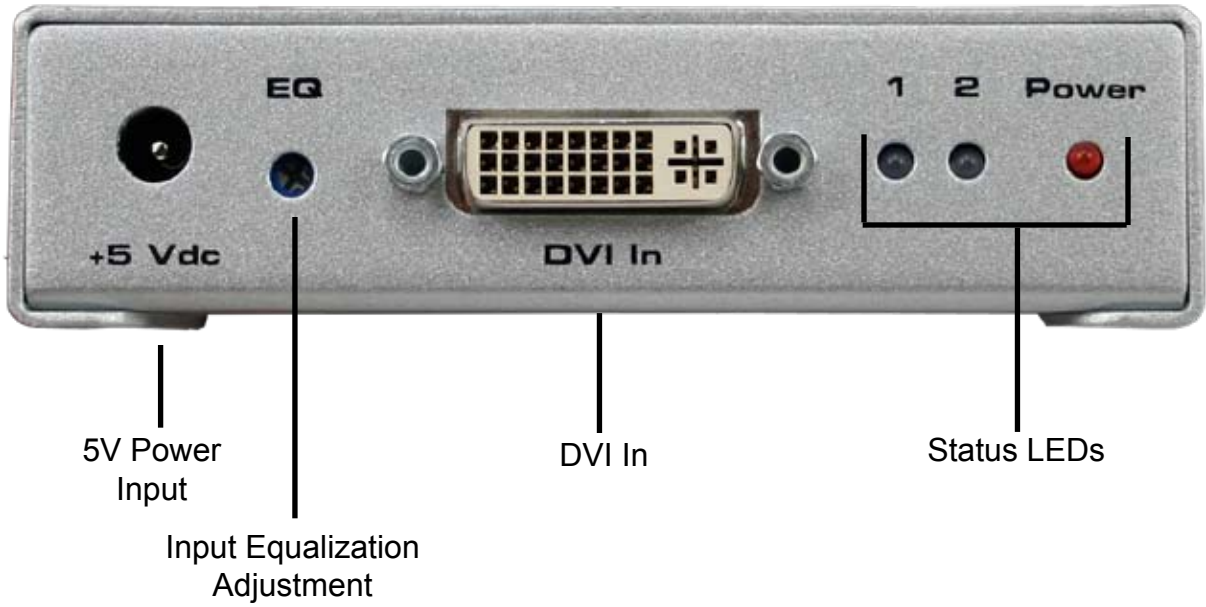
- Splits a Single Link DVI signal to two or more Single Link DVI displays
- Uses high quality DVI cables for connections
- Allows simultaneous display
- Supports 720P, 1080i, and 1080P resolutions
- Supports HDCP pass-through for output one
- Supports DDWG standard for DVI compliant monitors
- Installs in seconds

Includes:

- (1) 1:2 DVI SL Splitter
- (1) 6' Single Link DVI cable (M-M)
- (1) 5V DC Power Supply
- (1) User's Manual



PANEL DESCRIPTIONS



CONNECTING AND OPERATING THE 1:2 DVI SL Splitter

How to Connect the 1:2 DVI SL Splitter to your devices

- 1- Connect the supplied Single Link DVI cable from the back of the computer into the input of the 1:2 DVI SL Splitter.
- 2- Connect the cable from your first display (monitor or projector) into the DVI Out 1 slot on the 1:2 DVI SL Splitter. (this will be what the computer will recognize)
- 3- Connect the cable from your second display (monitor or projector) into the DVI Out 2 slot on the 1:2 DVI SL Splitter.
- 4- Plug the 5v power supply into the 1:2 DVI SL Splitter.
- 5- Plug the 5v wallmount power supply into the wall outlet.
- 6- Restart your computer only after you've made all the connections.
- 7- Adjust the EQ to resolve any imperfections in the image.

***Note:** Only output #1 of the 1:2 DVI SL Splitter is HDCP pass-through.

EQUALIZATION CONTROL

External equalization control for the 1:2 DVI SL Splitter



Input Equalization Adjustment

The external equalization knob can be used to equalize the incoming signal resulting from long cables for better picture quality. By turning the equalization knob clockwise or counter-clockwise you will eliminate any noise and/or degradation in the signal. You should be able to find a "sweet spot" somewhere in the middle.

SPECIFICATIONS

Video Amplifier Bandwidth	1.65 Gbps
Single Link Range	1920 x 1200
DVI Input/Output Connector	DVI-I (29 pin) female (Digital Only)
Power Consumption	10 Watts (max)
Power Supply	5V DC
Dimensions	5" W x 1" H x 4" D
Shipping Weight	4 lbs

WARRANTY

Gefen Inc. warrants the equipment it manufactures to be free from defects in material and workmanship.

If equipment fails because of such defects and Gefen Inc. is notified within two (2) year from the date of shipment, Gefen Inc. will, at its option, repair or replace the equipment, provided that the equipment has not been subjected to mechanical, electrical, or other abuse or modifications. The two year warranty is only valid on new products purchased as of January 2007. All products purchased before this date still retain their 1 year warranty.

Equipment that fails under conditions other than those covered will be repaired at the current price of parts and labor in effect at the of repair. Such repairs are warranted for ninety (90) days from the day of reshipment to the Buyer.

This warranty is in lieu of all other warranties expressed or implied, including without limitation, any implied warranty or merchantability or fitness for any particular purpose, all of which are expressly disclaimed.

1. Proof of sale may be required in order to claim warranty.
2. Customers outside the US are responsible for shipping charges to and from Gefen.
3. Copper cables are limited to a 30 day warranty and cable must be free from any scratches, markings, and neatly coiled.

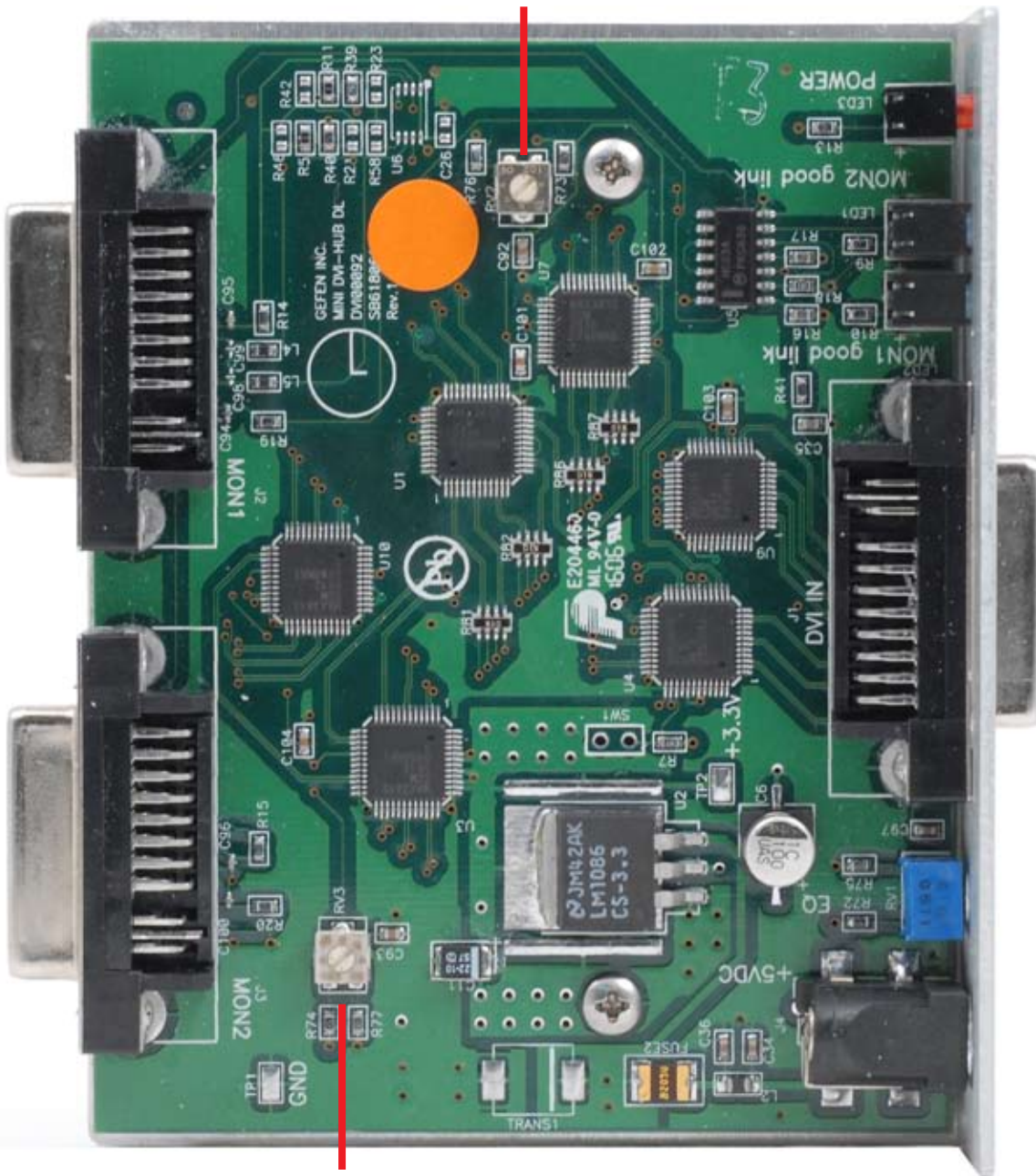
The information in this manual has been carefully checked and is believed to be accurate. However, Gefen Inc. assumes no responsibility for any inaccuracies that may be contained in this manual. In no event will Gefen Inc., be liable for direct, indirect, special, incidental, or consequential damages resulting from any defect or omission in this manual, even if advised of the possibility of such damages. The technical information contained herein regarding 1:2 DVI SL Splitter features and specifications is subject to change without notice.

TROUBLESHOOTING

If you can't get the video noise to clear by adjusting the external equalization trim pot, you can adjust the internal equalization trim pots to remove video noise per each output.

Internal equalization control for the 1:2 DVI SL Splitter

Internal Equalization
Knob for DVI Output 1



Internal Equalization
Knob for DVI Output 2

The internal E.Q. knobs can be reached by removing the 6 hex nuts on the DVI connections and the 4 screws on the bottom of the unit.

These E.Q. knobs control the pre-emphasis on the outgoing video signal and will equalize the image, especially for long cable runs.