

H80FCL

New Product

Potentiometer with a hall effect IC type resistive element

Nomenclature

S H 80 FCL - S 2 DF K - 0 0 0 0

● **S**
means special mechanical specifications not applicable to our standard.

● **H**
means hall effect IC type potentiometer is incorporated.

● **80**
means approx. size of base housing in mm.

● **FC**
means Foot controller.
L means small and compact-sized pedal type.

①

②

● **0000**
Special part number:
In case we produce customized product, we add 4-digit branch number.

● **With kick-down device:**
The operating force is increased at about 5° from the end of stepping.

● ① **Number of switches to be incorporated(Option).**

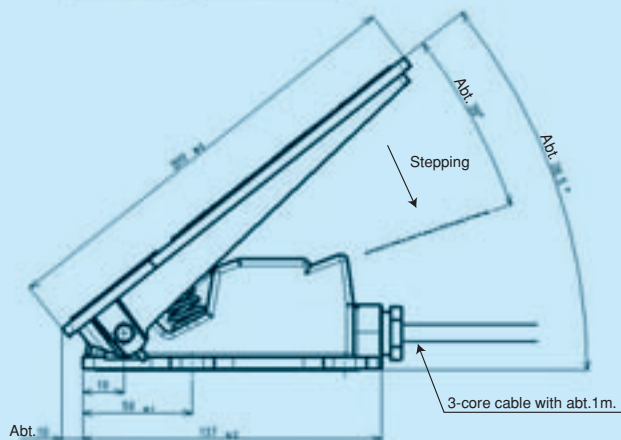
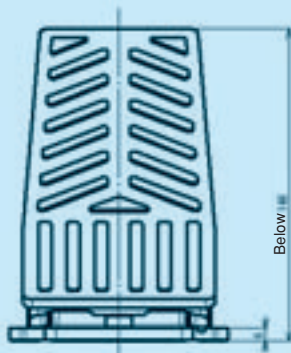
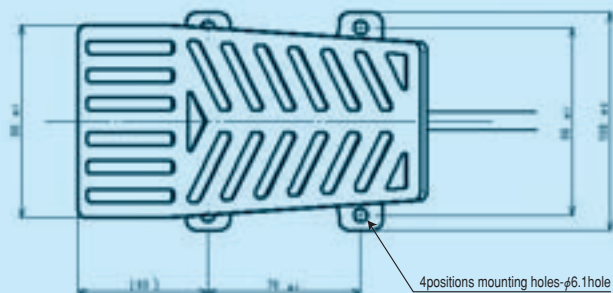
1...1 switch incorporated.
2...2 switches incorporated.

● ② **Rating of switch:**
D·F...micro-switch

● **Output characteristic**

S...single output X...dual cross output P...dual parallel output

Standard Dimensions



(unit : mm)

STANDARD SPECIFICATIONS

Mechanical performance

Operating method: Stepping pedal type.
Operating angle: Approx.20°.
Operating force: Standard automatic spring return device.
 Abt.10N~60N(Abt.1,000gf.~6,000gf.)
Operating temperature range: -20°C~+65°C
Vibration: 10~55Hz 98m/s²
Shock: 294m/s²(11ms)
Life expectancy: Approx.2,000,000 operations.
Mass: Approx.850g

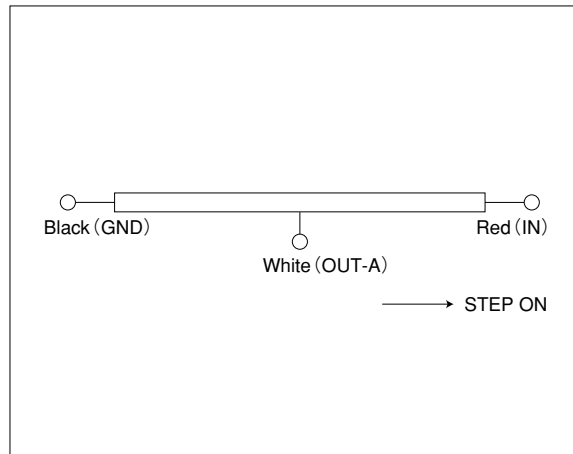
Electrical performance

Hall effect IC type potentiometer is incorporated: SHSM18E, hall effect IC type single-turn contactless potentiometer.
 ● Applied voltage: 5V±10% D.C.
 ● Output range: Approx.10%~90% Vin
 ● Independent linearity tolerance: ±3%
Dielectric strength: 1 minute at 250V.A.C.
Insulation resistance: Over 100MΩ at 250V.D.C.
EMC durability: 100V/m(80MHz~1GHz 1KHz sine-wave 80%AM modulation)
ESD durability: ± 8 KV contact ±15KV aerial discharge.

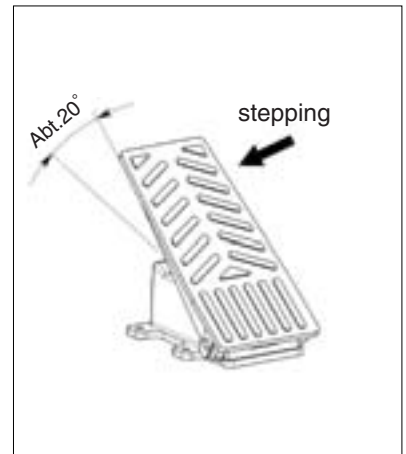
Optional specifications

With switch mounted:
 D version switch: SW "ON" at about 3°from the beginning of stepping under 1V±0.3V.D.C. output.
 F version switch: SW "ON" at about 3°from the end of stepping under 4V±0.3V.D.C. output.
With kick-down device: Operating force is increased at about 5°from the end of stepping (Max.approx.250N)
With special output: Dual parallel output, Dual cross output.

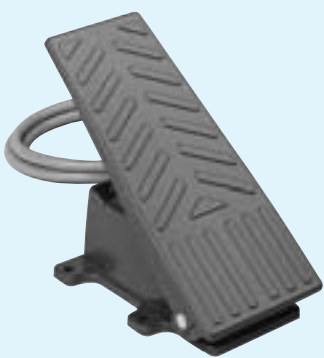
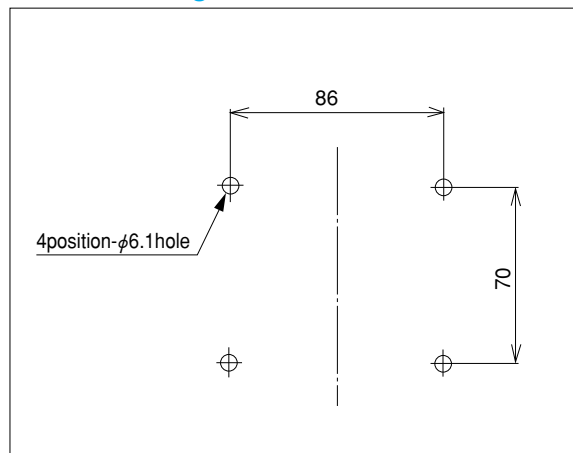
Terminal Connection Diagram



Angle of stepping



Panel Arrangement



H80FCL-S