



Model 25HP-10E

● Standard Model Nos.

Bushingmount type:

- 25HP-5 (B~E) (5-turn)
- 25HP-10 (B~E) (10-turn)

(Note: Our standard shaft designation is B, unless otherwise specified.)

Servomount type:

- 25HPS-5 (5-turn)
- 25HPS-10 (10-turn)

● General Specifications

Standard Resistance

Range: 100Ω to 50kΩ (5-turn)
100Ω to 100kΩ (10-turn)

Max. Practical

Resistance Value: 100kΩ (5-turn)
200kΩ (10-turn)

Total Resistance

Tolerance: Standard Class ±3% (H)
Precision Class ±1% (F)

Independent Linearity

Tolerance:

	5-turn	10-turn
Standard Class	±0.3%	±0.2%
Precision Class	±0.2%	±0.1%

(Below 5kΩ) (±0.25%) (±0.15%)

Power Rating:

1.5W (5-turn)
2.0W (10-turn)

Noise:

Below 100Ω E.N.R.

Electrical Travel:

360° × n ±5° (n: No. of turns)

Mechanical Travel:

360° × n ^{+10°}_{0°} (n: No. of turns)

Insulation Resistance:

Over 100 MΩ at 1,000V.D.C.

Dielectric Strength:

1 minute at 1,000V.A.C.

Starting Torque:

Below 8mN·m (80gf·cm)
(Bushingmount type)
Below 5mN·m (50gf·cm)
(Servomount type)

Stopper Strength:

Approx. 0.9N·m (9kgf·cm)

Max. Working

Voltage:

900V

Resist. Temperature

Coefficient of Wire:

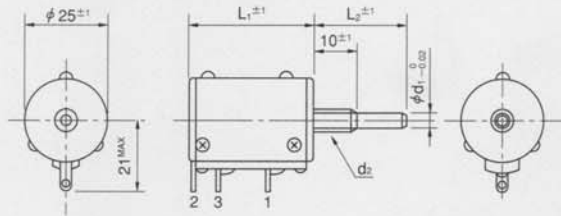
±20p.p.m./°C

Mass:

Approx. 50g (5-turn)
Approx. 60g (10-turn)

● Standard Dimensions

■ Bushingmount type

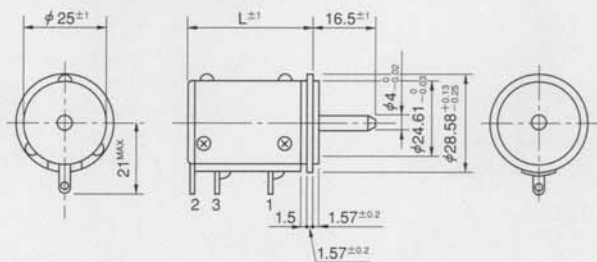


Model No.	L ₁
25HP-5	29
25HP-10	37.5

Shaft Designation	Shaft Dimensions		Mounting Screw
	d1	L ₁	d2
B	φ4	25	M7 P=0.75
C	φ6	28	M9 P=0.75
D	φ6	18.5	M9 P=0.75
E	φ6	25	M9 P=0.75

Note: 1. Unless otherwise specified our standard shaft designation is B.
2. 1 pc. inner teeth washer and 2 pcs. hex nuts are attached.

■ Servomount type



Model No.	L
25HPS-5	30.5
25HPS-10	39

● Standard Resistance Values ■ No. of Wire Turns ■ Resistance Wire Used

Resist. Value (Ω)	100	200	500	1k	2k	5k	10k	20k	50k	100k	200k
25HP-5	1,300	1,700	2,000	2,400	2,500	3,200	4,000	5,000	7,000	※8,800	—
25HP-10	2,000	2,600	3,100	4,000	4,800	5,000	6,500	8,000	10,000	14,000	※18,000
Resist. Wire Used	Cu-Ni System					Ni-Cr System					

Note: Mark ※ shows values at special higher practical resistance.

● Special Specifications Available

Lower resistance (10Ω, 20Ω, 50Ω), 3-turn type (S25HP-3), 15-turn type (S25HP-15), 20-turn type (S25HP-20), Extra taps (Available up to 5 taps), Multi-ganged (Available up to 2 gangs), Shaft with front and rear extension (Rear shaft with 3mm dia. and 10mm length), Shaft dia. (φ3.175mm, φ6.35mm) · bushing with inch dimensions, With a limit-switch adaptor, Special machining on the shaft.