

Features

- Available sharp click feel with a positive tactile feedback
- Ultra-miniature and lightweight structure suitable for high density mounting
- Very economical with high reliability

Applications

- Musical equipment
- Electronic equipment
- Test equipment

SDTM Series SMD Tact Switch

Electrical Characteristics

Electrical Life

.....100,000 cycles min. for 260g
500,000 cycles min. for 70g,
100g, 160g

RatingDC 12V, 50mA

Contact Resistance100 mohms max.

Insulation Resistance ..100Mohms min.,
DC 500V min.

Dielectric Strength

.....AC 250V for 1 minute

Contact Arrangement...1 pole 1 position

Environmental Characteristics

Mechanical Life100,000 cycles min.

Operation Force..70g, 100g, 160g, 260g

Tolerance.....±50g (±20g for 70g)

Stop Strength..Place the switch vertical,
a static load of 3kg shall be

applied in the direction of actuator
operation for a period of 15 seconds

Stroke.....0.25mm (+0.2mm, -0.1mm)

Temperature Range.....-25°C to +70°C

Vibration TestMIL-STD-202F,
Method 201A

Frequency10-50-10Hz/1minute

Directions.....X,Y,Z 3 mutually per
pendicular directions

Time.....2 hours each direction,
high reliability

Shock TestMIL-STD-202F,
Method 213A, Condition A

Gravity50g (peak value), 11msec.

Directions/Time.....6 sides and 3 times
in each direction

Physical Characteristics

Cover MaterialsStainless steel

Base MaterialsThermoplastic Nylon
FG 101, UL94V-0

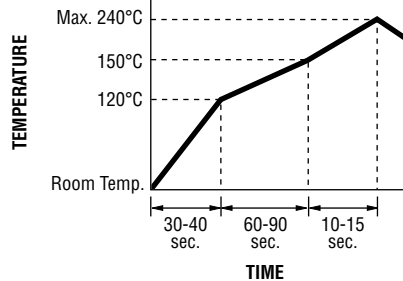
Actuator MaterialsThermoplastic
Nylon UL94V-0

Color.....Light blue, black, brown, red

Contact Disc. MaterialsPhosphor
bronze with silver cladding

Terminal MaterialsBrass with silver
cladding

REFLOW SOLDERING PROFILE (SMD MODEL)



SOLDERING PROCESS

Hand Soldering

Soldering iron of 30W or less,
controlled at 320°C for approx. 2
seconds while applying solder.

Reflow Soldering

Peak temperature or reflow oven
should be set to 240°C max.

HOW TO ORDER

SDT M - 6 10 - K TR

Model _____

Product Code _____

M = SMD

Size _____

6 = 6mm

Height _____

10 = 4.3mm

20 = 5.0mm

30 = 7.0mm

44 = 7.3mm (square head)

50 = 9.5mm

60 = 13mm

Actuating Force _____

U = 70g (blue)

K = 100g (black)

N = 160g (brown)

R = 260g (red)

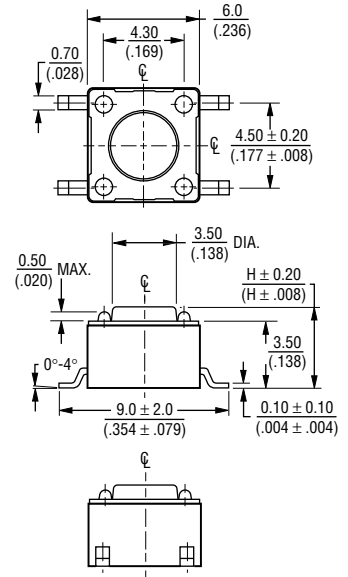
Packaging Option _____

TR = Embossed tape

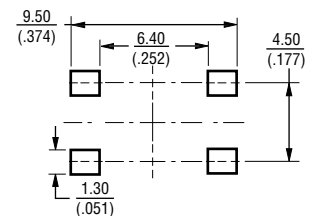
610 = 1000 pcs.

620 = 900 pcs.

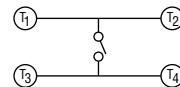
Product Dimensions



RECOMMENDED PCB LAYOUT



CIRCUIT DIAGRAM



DIMENSIONS: $\frac{MM}{(IN)}$

Additional Features

- Insert molding in the contact with special treatment prevents flux buildup during soldering and permits autodipping

SDTM Series SMD Tact Switch

BOURNS®

Packaging Specifications

SDTM610/620(TR)

