

9mm Conductive Plastic Potentiometer



FEATURES

- Conductive Plastic Element
- Smooth Feel
- High Rotational Life
- Quiet Electrical Output
- Robust Construction
- Shaft lengths up to 35mm

ELECTRICAL SPECIFICATIONS	
PARAMETER	
Resistance Range	
Linear	200Ω to 2.5MΩ
Non - Linear	1.0KΩ to 1.0MΩ
Resistance Tolerance	± 20% standard
Linearity	± 5% through independent (through 100KΩ)
Power Rating: Bushing Mount	
Linear Taper	0.10 watt @ 40°C
Non - Linear Taper	0.05 watt @ 40°C
Power Rating: PC Mount	0.05 watt @ 40°C
	Derate to 0 watt @ 100°C
Minimum Resistance	10Ω maximum Each End Linear 10Ω maximum Low End 1% High End Non Linear
Maximum Cont. Working Voltage	100VAC
Dielectric Withstanding Voltage	Sea level - 300 VAC
Dynamic Noise (CRV)	2% of Rt Standard Linear

ENVIRONMENTAL SPECIFICATIONS	
PARAMETER	
Storage Temperature	- 40°C to + 100°C
Temperature Cycling	-40°C to ± 100°C (5 cycles, 4% ΔRt)
Load Life	1000 hours, Rated Load @ 40°C (10% ΔRt)
Rotational Load Life	40,000 cycles (10% ΔRt)

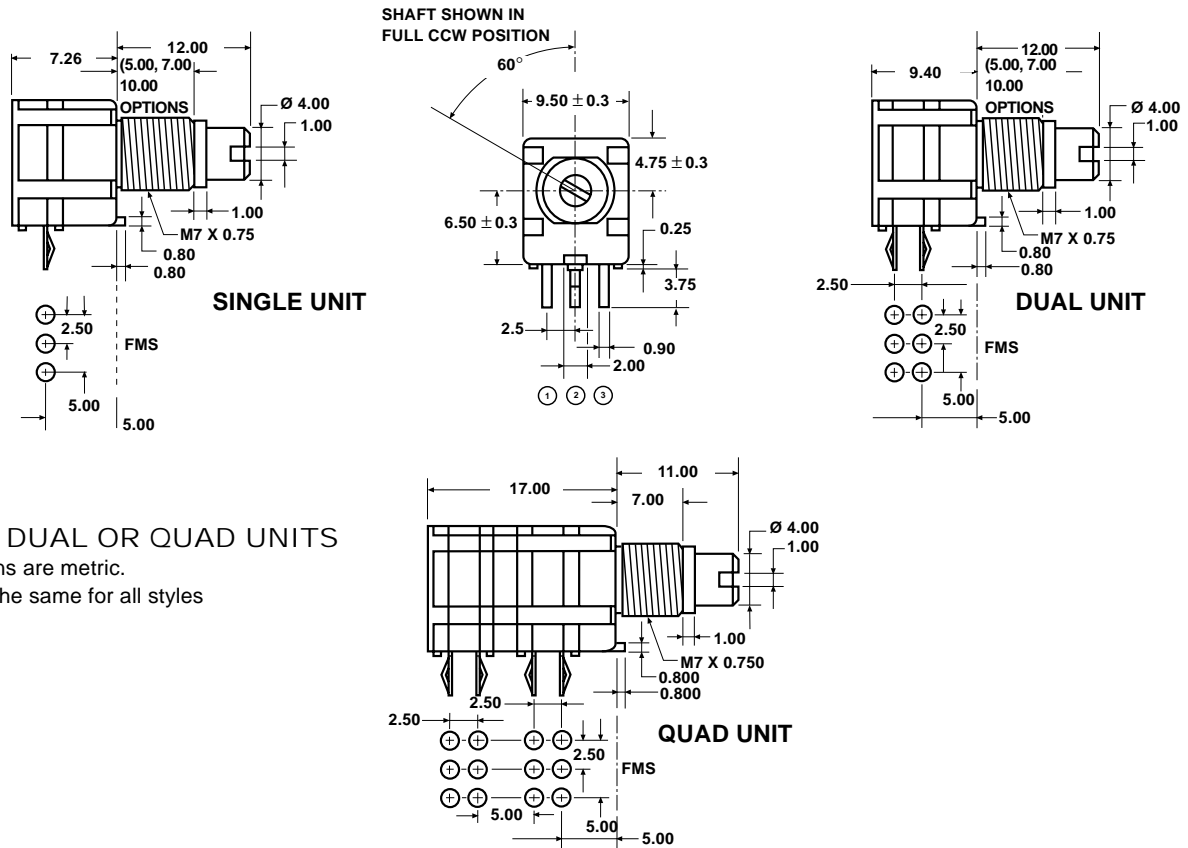
ORDERING INFORMATION									
180	S	X	4	P	25	F	102	S	P
MODEL NO OF SECTION	MECHANICAL CONFIGURATION	LOCATING PIN	BUSHING SIZE & SHAFT DIAMETER	SHAFT LENGTH CODES	SHAFT STYLE	RESISTANCE CODE	TAPER	TERMINAL CONFIGURATION	
S: Single	X: Standard	4: @ 6 o'clock	Metal shaft: 6mm dia.	Single Shaft	S: Slotted	EIA code - first two digits are significant	S: Linear, ± 20%	P: PC terms 3.5mm lg	
D: Dual	D: Centre Detent	X: No Loc. Pin	Q: M7 x 0.75 thrd, 7mm lg	Code FMS in mm	F: Flatted	third digit is the no. of zeros	Z: CW Log, ± 20%	B: Type B Mounting	
Q: Quad			Metal shaft: 4mm dia	10	K: Knurled	Standard values	R: CCW Log, ± 20%	w/rear support plate	
			S: M7 x 7.5 thrd, 7mm lg	13		200 50K	Note: Resistance values above 1MΩ are ± 30%		
			T: M7 x 0.75 thrd, 5mm lg	16		500 100K			
				22		1K 250K			
				25		2.5K 500K			
						5K 1MΩ			
						10K 2MΩ			
Example: 180 - S - X - 4 - P - 25 - F - 102 - S - P									25K 2.5MΩ

Model 180

Spectrol

(9mm) Conductive Plastic Potentiometer

DIMENSIONS in millimeters



SINGLE, DUAL OR QUAD UNITS
 All dimensions are metric.
 End view is the same for all styles

MECHANICAL SPECIFICATIONS	
PARAMETER	
Materials of Construction: Housing Shaft Wiper Bushing	Moulded Thermoplastic Metal Metal Contact Spring Metal
Construction: Mounting Locating Pin Pin Sealed	Bushing or PC @ 6 o'clock No pin, optional Not sealed for washing
Terminals: Number Type Strength Mechanical Rotation	3 in lines PC Pins on 0.100 Grid Standard 2lb Push & Pull 295, ± 5
Torque Operating Variation in Control Stop	0.2 to 2.5 oz - in. @ 25°C, 0.5 oz - in. 3 in - lbs

MARKING	
Unit Identification	Ink stamp on periphery or rear