

Features

- Single gang panel control
- Carbon element
- Center detent option
- Wide range of resistance tapers
- Insulated shaft styles
- Assortment of pin layouts

Applications

- Audio/TV sets
- Car radio
- Amplifiers/mixers/drum machines/synthesizers
- PCs/monitors
- Appliances

PDB12 Series - 12mm Rotary Potentiometer

Electrical Characteristics

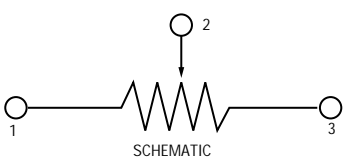
TaperA, B
 Standard Resistance Range1K ohms to 1M ohms
 Standard Nominal Resistance ValueSee standard resistance table
 Standard Resistance Tolerance±20%
 Residual Resistance.....Max. 10 ohms

Environmental Characteristics

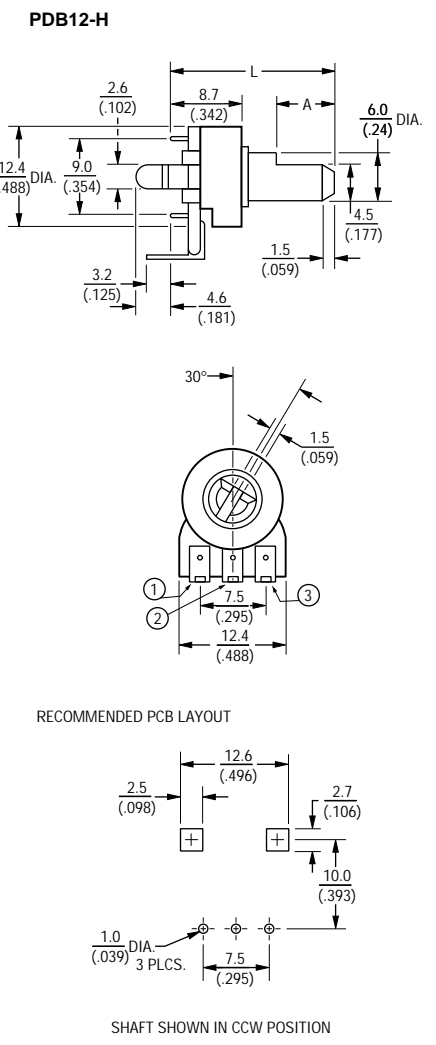
Power Rating
 Taper B0.08 watt
 Taper A0.04 watt
 Maximum Operating Voltage
 Taper B150 V
 Taper A100 V
 Sliding Noise.....47mV maximum

Physical Characteristics

Mechanical Angle300° ±5°
 Rotational Torque.....20 to 200 gcm
 Stop- End Strength3 kgcm minimum
 Rotational Life15,000 cycles minimum
 Soldering Condition260°C max. within 3 seconds

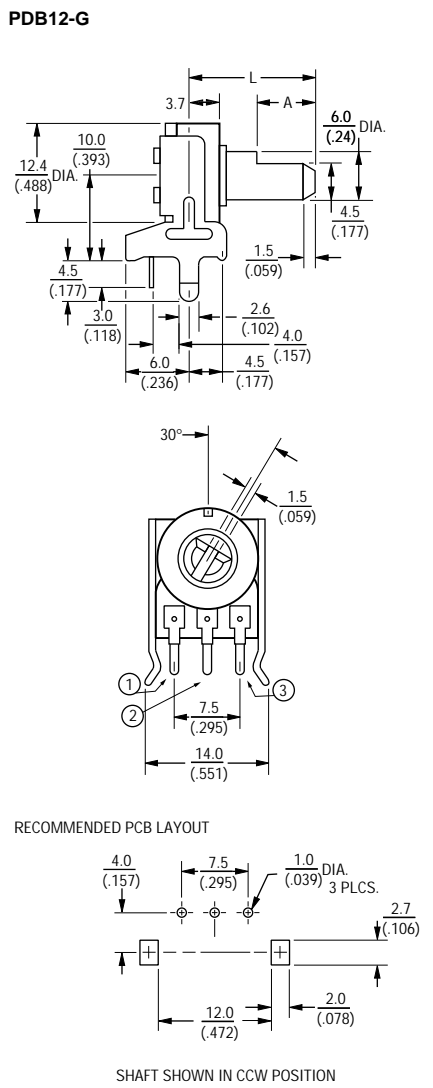


Product Dimensions



PDB12-H Dimensions

L	20	25
	(.787)	(.984)
A	7	12
	(.275)	(.472)



PDB12-G Dimensions

L	20	25
	(.787)	(.984)
A	7	12
	(.275)	(.472)

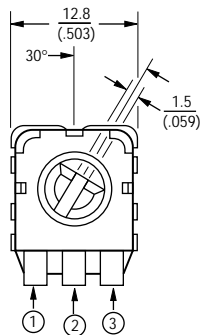
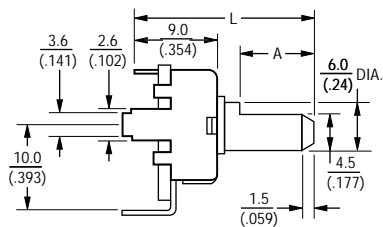
DIMENSIONS ARE: $\frac{\text{METRIC}}{\text{(INCHES)}}$

PDB12 Series - 12mm Rotary Potentiometer

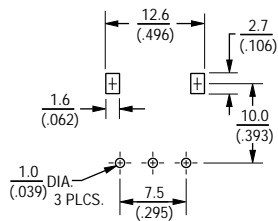


Product Dimensions

PDB12-M



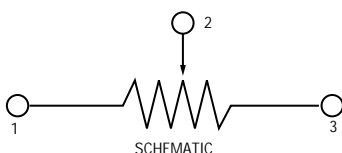
RECOMMENDED PCB LAYOUT



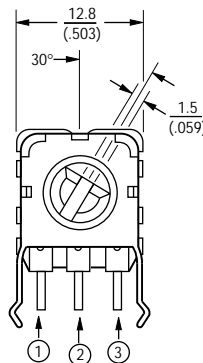
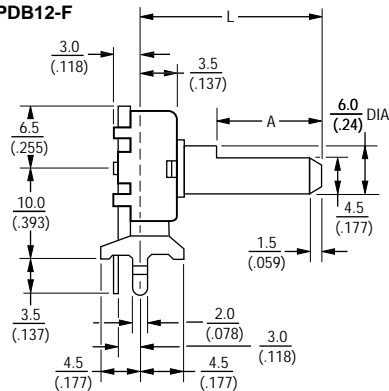
SHAFT SHOWN IN CCW POSITION

PDB12-M Dimensions

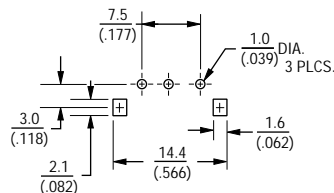
L	20	25
	(.787)	(.984)
A	7	12
	(.275)	(.472)



PDB12-F



RECOMMENDED PCB LAYOUT



SHAFT SHOWN IN CCW POSITION

PDB12-F Dimensions

L	20	25
	(.787)	(.984)
A	7	12
	(.275)	(.472)

How To Order

PDB12 - H 4 20 1 - 103 A F

Model _____
 Terminal Config. _____
 (See individual drawings)
 Option _____
 • 2 = Center Detent
 • 4 = No Detent
 Standard Shaft Length _____
 • 20 = 20mm
 • 25 = 25mm
 Number of Gangs _____
 • 1 = Single Gang
 Resistance Code (See Table) _____
 Resistance Taper _____
 • A = Audio Taper
 • B = Linear Taper
 Shaft Style _____
 • F = Flat Type Insulated Shaft
 Other styles available.

Standard Resistance Table

Resistance (Ohms)	Resistance Code
1,000	102
2,000	202
5,000	502
10,000	103
20,000	203
50,000	503
100,000	104
200,000	204
500,000	504
1,000,000	105