

## Features

- No backlash
- Compact - requires minimal panel space (22.2mm diameter requirement)
- For use with precision potentiometers or other rotating devices, up to 15 turns
- Metal shaft
- High Force "Click Brake"
- Model H-22-6A available in two versions - black on chrome background or white on black background

## H-22 Turns-Counting Dial

### Mechanical and Physical Characteristics

Number of Turns .....	0 to 15
Dial Divisions .....	50 per turn
Readability - Over 10 Turns .....	2 parts in 1000
Torque With Brake Engaged .....	5 oz-in. (350 cm. gr.) minimum
Weight .....	15 grams
Markings .....	Black on chrome background*
Mechanical Life .....	10,000 cycles
Set Screws .....	1 included

### Shaft and Bushing Requirements

Shaft Extension Beyond Panel .....	0.712 in. minimum (18.1 mm)
	0.875 in. maximum (22.2 mm)
Bushing Extension Beyond Panel .....	0.375 in. maximum (9.53 mm)
Shaft Diameter .....	0.250 in. (6.35 mm)

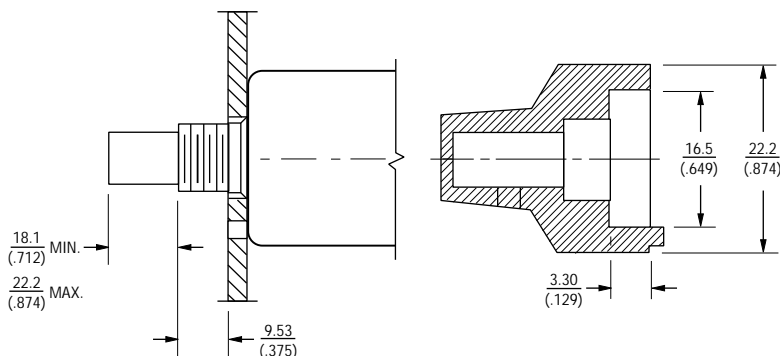
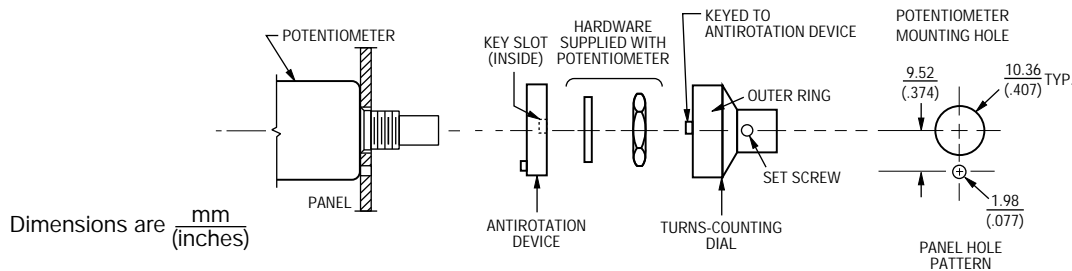
\*Model H-22-6A-B available in white on black background.

### FEATURES

- For use with precision potentiometers or other rotating devices up to 15 turns
- Excellent legibility - black marking on chrome background
- High quality, rugged construction, hardchrome housing, metal-to-metal setscrew threads
- No backlash - mounted directly to potentiometer shaft
- Compact - requires only 7/8" (22.2) diameter panel space
- High force, positive brake

### H-22 MOUNTING INSTRUCTIONS

1. Insert potentiometer in panel.
2. Install anti-rotation device using hardware supplied with potentiometer.
3. Turn potentiometer shaft counterclockwise to minimum resistance or voltage ratio.
4. Set the Model H-22 dial to "0.0" and brake on.
5. Insert the Model H-22 dial on the potentiometer shaft lightly against the panel.
6. Tighten set screw to potentiometer shaft



### Shaft Diameter

Part Number	Accepts Shaft Diameter
H-22-6A	6.35mm (.250)
H-22-6M	6mm
H-22-3A	3.17mm (.124)