



Features

- Servo mount style
- Shaft supported by front and rear precision ball bearings
- Non-standard features and specifications available
- Gangable up to 10 cups

6574 - Precision Potentiometer

Electrical Characteristics¹

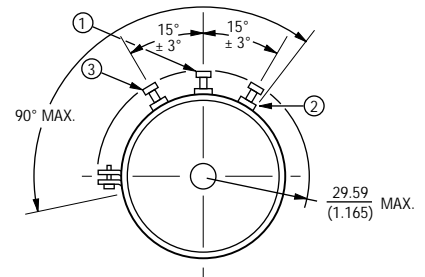
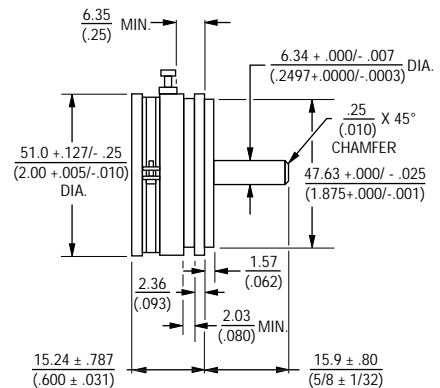
Standard Resistance Range	1K to 100K ohms
Resistance Tolerance	±10%
Independent Linearity	±0.25%
Effective Electrical Angle	350° ±2°
Minimum Voltage	0.1% maximum (0.2% at 2K ohms, 0.4% at 1K ohms)
Resolution	Essentially infinite
Power Rating	(Voltage Limited By Power Dissipation or 350 VAC, Whichever is Less)
+70°C	2 watts
+125°C	0 watt
Output Smoothness	0.1%
Dielectric Withstanding Voltage	MIL-STD-202, Method 301
Sea Level	1,000 VAC minimum
70,000 Feet	350 VAC minimum
Insulation Resistance (500 VDC)	1,000 megohms minimum

Environmental Characteristics¹

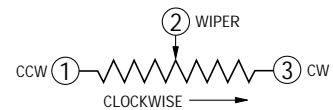
Operating Temperature	
Static Operation Temperature Range	-65°C to +125°C
Dynamic Operation Temperature Range	+1°C to +125°C
Temperature Coefficient ²	±500ppm/°C maximum
Moisture Resistance	MIL-STD-202, Method 103, Condition B
Total Resistance Shift	±10% maximum
Vibration	15G
Wiper Bounce	0.1 millisecond maximum
Total Resistance Shift	±2% maximum
Shock	60G
Wiper Bounce	0.1 millisecond maximum
Rotational Life (No Load)	25,000,000 shaft revolutions
Total Resistance Shift	±10% maximum
Load Life	1,000 hours, 1.5 watts
Total Resistance Shift	±10% maximum

Mechanical Characteristics¹

Shaft Runout	0.001 in. (0.025mm) T.I.R.
Shaft End Play	0.003 in. (0.08mm) T.I.R.
Shaft Radial Play	0.003 in. (0.08mm) T.I.R.
Pilot Diameter Runout	0.001 in. (0.025mm) T.I.R.
Lateral Runout	0.003 in. (0.08mm) T.I.R.
Backlash	0.1° maximum
Mechanical Angle	Continuous
Torque (Starting & Running)	0.75 oz.-in. (0.53 Ncm) maximum



TOLERANCES: EXCEPT WHERE NOTED
 DECIMALS: .XX ± .38 / (.015), .XXX ± .13 / (.005)
 FRACTIONS: ±1/64
 DIMENSIONS: MM / (IN.)



Recommended Part Numbers

Part Number*	Resistance (W)
6574S-1-102	1,000
6574S-1-502	5,000
6574S-1-103	10,000

BOLD-FACE LISTINGS ARE IN STOCK AND READILY AVAILABLE THROUGH DISTRIBUTION.

FOR OTHER OPTIONS CONSULT FACTORY.

¹At room ambient: +25°C nominal and 50% relative humidity nominal, except as noted.