

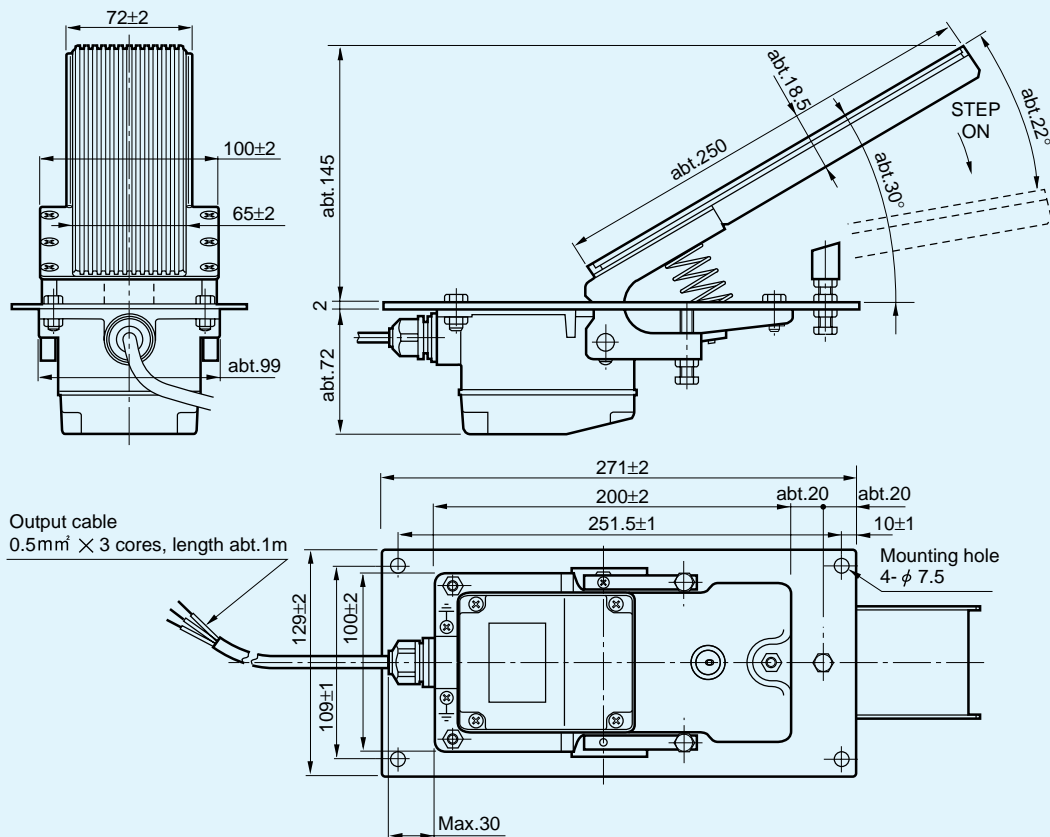
270FCD

Nomenclature

S **270** **FCD** - **1**^①**0**^②**A** - **0000**

- **S**
S means special mechanical specifications not applicable to our standard.
- **270**
270 means approx. size of base housing in mm.
- **FCD**
FC means Foot Controller,
D means pedal type with mounting panel.
- **0000**
Special branch number basing on customer's special requirements with 4 digits number.
- **0**^① **Number of switches to be mounted (Option).**
0--No switch mounted.
1--1 switch mounted.
2--2 switches mounted.
- **A**^② **Rating of switch :** A. B. C. ---Code-switch
D. E. F. ---Micro-switch
(For details, please refer to page 56)
G---Other switch
- **1** **Number of potentiometers to be mounted (model SFCP22E)**
0--No potentiometer mounted.
1--1 potentiometer mounted.
2--2 potentiometers mounted (Option).

Standard Dimensions



(Unit : mm)



270FCD-10
(standard)

STANDARD SPECIFICATIONS

●Mechanical Performances

Operating method : Stepping pedal type
Operating angle : Approx. 22°
Operating force : With standard automatically spring return device
 Abt. 8N ~ 22N (Abt. 800gf. ~ 2,200gf.)
Operating temperature range : -20°C ~ +65°C
Vibration : 10 ~ 55Hz 98m/s² (10G)
Shock : 294m/s² (30G)
Life expectancy : Approx. 2,000,000 operations
Mass : Approx. 2kg

●Electrical Performances

Potentiometer mounted : SFCP22E, 10kΩ ±20%, 0.4W, Independent linearity tolerance ±3% (conductive plastic resistive element)
Electrical rotating angle : Approx. 90°
Output smoothness : Below 0.2% against input voltage
Contact resistance variation : Below 5% C.R.V.
Resolution : Essentially infinite
Dielectric strength : 1minute at 500V A.C.
Insulation resistance : Over 1,000MΩ at 500V D. C.

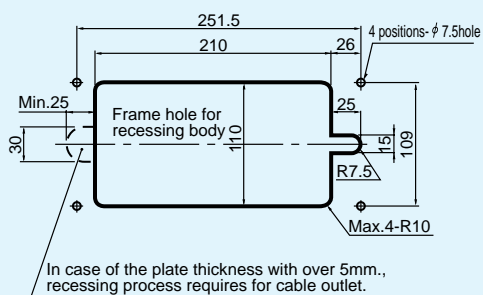
●Special Specifications Available

-With switch mounted :

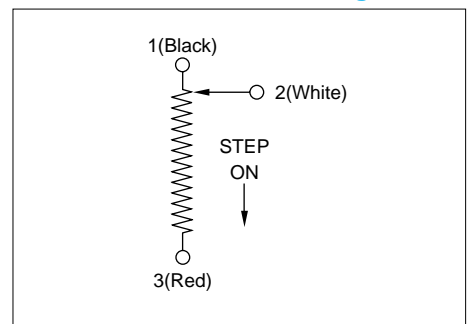
For rating of switch, please see page 56.
 If you require the unit with one switch mounted, unless otherwise specified, we supply the unit with A version switch (code-switch with "ON" operation at about 3° from the beginning of stepping).

(Model S270FCD-11A)

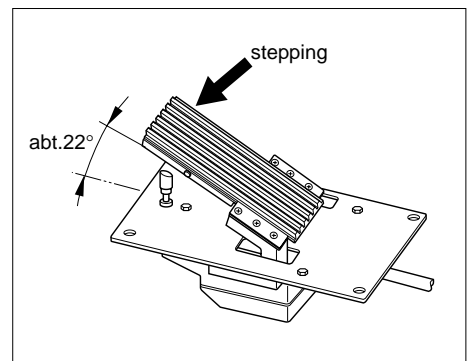
- IP65 sealing
- 2 ganged potentiometer
- Special resistance value on potentiometer
- An intermediate tap on potentiometer
- Special stepping angle



●Terminal Connection Diagram



●Angle of Stepping



(Unit : mm)