

ADVANCE INFORMATION

All information in this data sheet is preliminary and subject to change.

8/97



μ P Reset Circuits with Shunt Regulator in 3-Pin SOT23

General Description

The MAX6330L/S/T/MAX6331L/S/T combine a shunt regulator with a power-on reset output in a single SOT23-3 package. These devices come with supply-regulation options that include 5V, 3.3V, and 3V versions and either an active-low or active-high reset.

Reset is asserted when V_{CC} drops 7.5% below the regulation voltage, and it stays asserted for at least 100ms after V_{CC} has risen above the reset threshold. The output voltage has a $\pm 2\%$ tolerance over temperature and over a 100 μ A to 50mA current range. These two functions combined in a 3-pin SOT23-3 package make these parts space-saving and simple to use.

Applications

Computers
Controllers
Intelligent Instruments
Critical Microprocessor and Microcontroller
Power Monitoring
Portable/Battery-Powered Equipment
Automotive

Features

- ♦ **+5V, +3.3V, and +3V Versions**
- ♦ **100 μ A to 50mA Wide Shunt Current Range**
- ♦ **$\pm 2\%$ Tolerance on Output Voltage**
- ♦ **Low Cost**
- ♦ **Precision Power-Down Reset Threshold**
- ♦ **100ms (min) Timeout Period**
- ♦ **Immune to False Resets from Load-Current Transients**
- ♦ **3-Pin SOT23 Package**

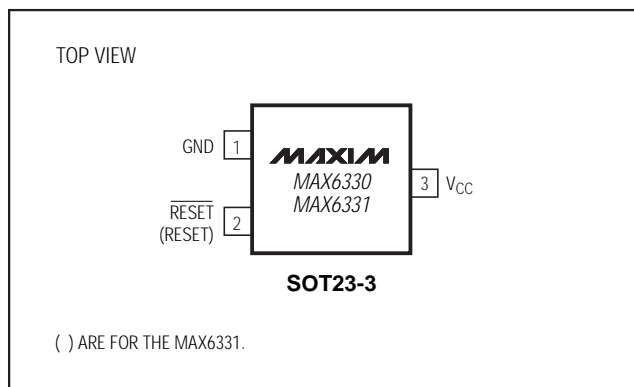
Ordering Information

PART*	TEMP. RANGE	PIN-PACKAGE
MAX6330_UR-T	-40°C to +85°C	3 SOT23-3
MAX6331_UR-T	-40°C to +85°C	3 SOT23-3

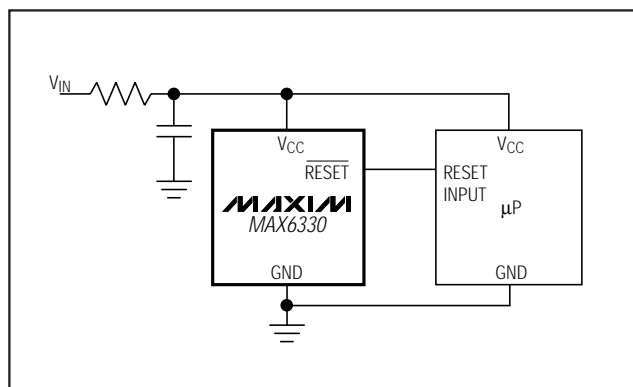
*Insert the desired part-number suffix (from the table below) into the blank to complete the part number.

SUFFIX	TYPICAL RESET THRESHOLD (V)	TYPICAL V_{CC} REGULATED VOLTAGE (V)	SOT TOP MARK	
			MAX6330	MAX6331
L	4.63	5.0	EKAA	ELAA
T	3.05	3.3	EMAA	ENAA
S	2.78	3.0	EOAA	EPAA

Pin Configuration



Typical Operating Circuit



Maxim Integrated Products 1

For free samples & the latest literature: <http://www.maxim-ic.com>, or phone 1-800-998-8800
For small orders, phone 408-737-7600 ext. 3468.

MAX6330L/S/T, MAX6331L/S/T