

Analog Rocker – AR3



Analog Rockers were developed to provide the reliability required in demanding environmental conditions such as multifunction grips, dashboards or armrest controls for heavy duty industrial applications.

The unique sensing design makes the rocker module an ideal proportional function solution for 'off-road' machinery.

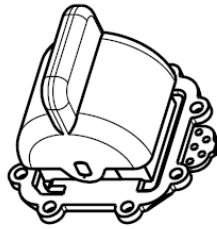
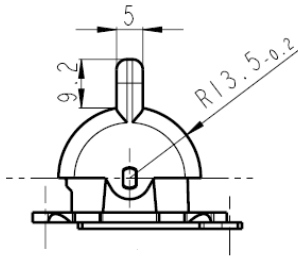
Analog Rockers have been designed to be integrated into standard and custom designed grips, panels and electronic controls.

Main Features

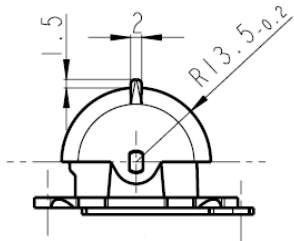
- Contactless sensing – Hall effect
- Life greater than 2 million cycles
- One sensor - optional second sensor for redundancy
- Integrated temperature compensation
- Short circuit protection

Electrical Data		
Supply Ratings	Voltage range DC current	8.5V ... 30V or 5.0 V \pm 10% 50 mA at 24V
Voltage Output	Output 1 Output 2*	0.5V ... 4.5V 4.5V ... 0.5V
Total error		< 10%
Output current		max. 1 mA
Other electrical Characteristics	EMI	> 100 V/m
Mechanical Data		
Life		> 2 million cycles
Operating temperature		
- Storage		- 40°C to 85°C
- Working		- 35°C to 70°C
Operating force		4-6 N
Vertical load maximum		30 N
Protection Level		IP 65 (from above when mounted)
Rocker deflection angle		\pm 30°

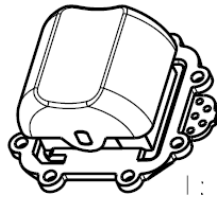
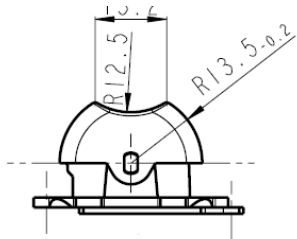
* for redundant version



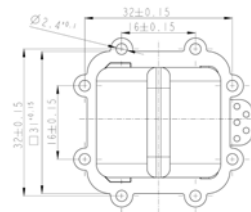
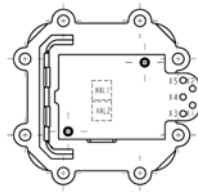
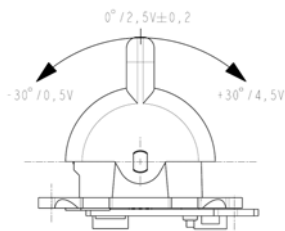
Module actuator shape 01



Module actuator shape 02



Module actuator shape 05



Pin assignment:

PIN	ALLOCATION	FUNCTION (8,5-30V)	FUNCTION (5V)
X5	OUT 1	OUTPUT 1 (HAL1)	OUTPUT 1 (HAL1)
X4	OUT 2	OUTPUT 2 (HAL2) *	OUTPUT 2 (HAL2) *
X3	V	RESERVED	5V±10%
X2	GND _{IN 1}	REFERENCE GROUND	REFERENCE GROUND
X1	U _{BAT}	VOLTAGE SUPPLY 8,5-30V	NOT CONNECTED

* FOR REDUNDANT VERSION ONLY