



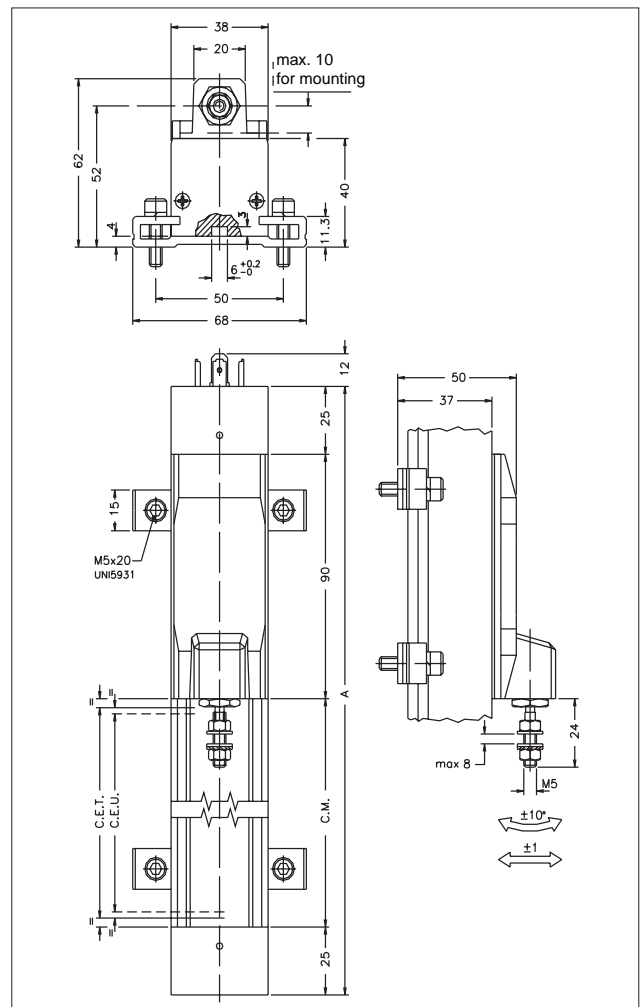
### Main features

- 100 to 2000 mm. stroke
- Mechanical linkage using joint with take up of play, M5 thread
- Independent linearity up to  $\pm 0,05\%$
- Repetibility 0,01 mm.
- Infinite resolution
- No variation of electrical signal outside theoretical electrical stroke
- Displacement speed up to:  
4 m/s PK L version  
10 m/s PK H version
- Working temperature:  $-30...+100^{\circ}\text{C}$
- Electrical connections:  
PK M 4-pole connector to standard DIN43650 ISO4400  
PK B 5-pole connector (DIN43322)
- Life duration:  $> 25 \times 10^6$  meters or  $> 100 \times 10^6$  operations, whichever is the smaller (within C.E.U.)
- Grade of protection IP40

### TECHNICAL DATA

Useful electrical stroke (C.E.U.)	100/130/150/200/225/300/400/450 500/600/750/900/1000/1250/1500 1750/2000
Independent linearity (within C.E.U.)	$\pm 0,1\%$ from 100 to 400 $\pm 0,05$ from 450 to 2000
Displacement speed	$\leq 4$ m/s PK L - $\leq 10$ m/s PK H
Displacement force	$\leq 1.2$ N
Vibrations	5...2000Hz, $A_{max} = 0,75$ mm $a_{max} = 20$ g
Shock	50 g, 11ms.
Acceleration operative	200 $\text{m/s}^2$ max (20g)
Tolerance on resistance	$\pm 20\%$
Recommended cursor current	$< 0,1 \mu\text{A}$
Maximum cursor current	10mA
Maximum applicable voltage	60V
Electrical isolation	$> 100\text{M}\Omega$ at 500V~, 1bar, 2s
Dielectric strength	$< 100 \mu\text{A}$ at 500V~, 50Hz, 2s, 1bar
Dissipation at $40^{\circ}\text{C}$ (0W at $120^{\circ}\text{C}$ )	3W
Temp. Coeff. of the resistance	$-200 \pm 200\text{ppm}/^{\circ}\text{C}$
Actual Temperature Coefficient of the output voltage	$< 1,5\text{ppm}/^{\circ}\text{C}$
Working temperature	$-30...+100^{\circ}\text{C}$
Storage temperature	$-50...+120^{\circ}\text{C}$
Case material	Anodised aluminium Nylon 66 GF 40
Cursor block material	Nylon 66 GF 40 Latilub 73/13
Fixing	Brackets with variable longitudinal axis

### MECHANICAL DIMENSIONS

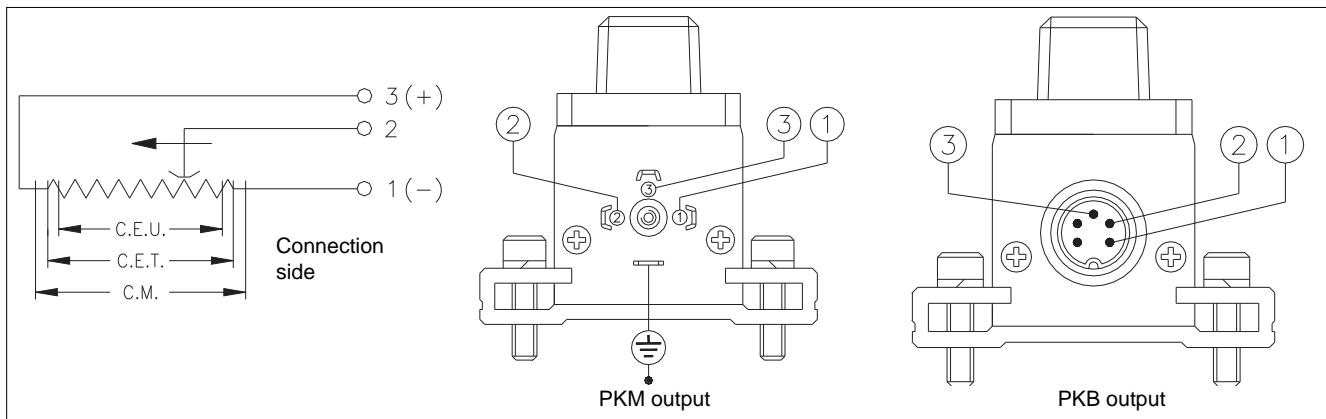


**Important:** all the data reported in the catalogue linearity, lifetime, temperature coefficient are valid for a sensor utilization as a ratiometric device with a max current across the cursor  $I_c \leq 0.1 \mu\text{A}$ .

## MECHANICAL / ELECTRICAL DATA

MODEL		100	130	150	200	225	300	400	450	500	600	750	900	1000	1250	1500	1750	2000
Useful electrical stroke (C.E.U.) +3/-0	mm	100	130	150	200	225	300	400	450	500	600	750	900	1000	1250	1500	1750	2000
Theoretical electrical stroke (C.E.T.) ±1	mm	103	133	153	204	229	305	406	458	509	611	763	915	1017	1271	1521	1771	2021
Resistance (C.E.T.)	kΩ	5					10					20						
Mechanical stroke (C.M.)	mm	113	143	163	214	239	315	416	468	519	621	773	925	1027	1281	1531	1781	2031
Case length (A)	mm	253	283	303	354	379	455	556	608	659	761	913	1065	1167	1421	1671	1921	2171

## ELECTRICAL CONNECTIONS



## ACCESSORIES

### STANDARD ACCESSORIES

Fixing kit for PK from 100 to 900:  
4 brackets, screws, grower

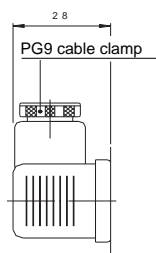
### Code

**PKIT010**

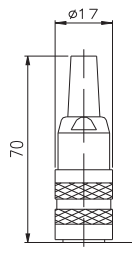
Fixing kit for PK from 1000 to 2000:  
3 brackets, screws, grower

**PKIT011**

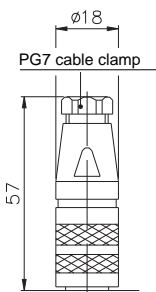
### OPTIONAL ACCESSORIES



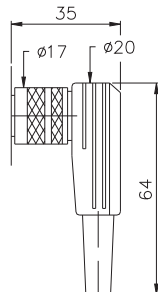
**CON006**  
Protection  
**IP65**



**CON011**  
Protection  
**IP40**



**CON012**  
Protection  
**IP67**



**CON013**  
Protection  
**IP40**

Extraction length of the connector 10 mm.

## ORDER CODE

Displacement transducer

**PK**

4-pole connector output  
DIN43650-ISO4400

**M**

5-pole connector output  
DIN43322

**B**

### Model

Displacement speed  
up to 4m/s

**L**

Displacement speed  
up to 10m/s

**H**

If requested, it is possible to supply  
models with non-standard mechanical  
and/or electrical features

**Example: PK - M - 275 - L**

Displacement transducer model PK, 4-pole connector output  
DIN 43650 -9 ISO 4400, useful electrical stroke (C.E.U.)  
275mm, displacement speed up to 4 m/s.

GEFRAN spa reserves the right to make any kind of design or functional modification at any moment without prior notice



**GEFRAN spa**  
via Sebina, 74  
25050 PROVAGLIO D'ISEO (BS) - ITALIA  
ph. 0309888.1 - fax. 0309839063  
Internet: <http://www.gefran.com>



cod. 84869-10/99