



Snap-In Version



Description

- Panel Mount:
Snap-in, from front side
- Appliance Inlet, Pin temperature 70 °C, Protection class I
- Solder terminals or quick connect terminals

Approvals

- VDE Certificate Number: 40030341
- UL File Number: E96454

Other versions on request

- Types for enhanced glow wire test requirements acc. IEC 60695-2-12 and -13 for the use in unattended household equipment acc. IEC 60335-1
- Variant with notch for V-Lock mating Cordsets

References

- Alternative: protection class II version [4794](#)
- Alternative: version with line filter [C20F](#); [5130](#)

Weblinks

[pdf-datasheet](#), [html-datasheet](#), [General Product Information](#), [Approvals](#), [CE declaration of conformity](#), [RoHS](#), [CHINA-RoHS](#), [REACH](#), [Mating Connectors](#), [e-Shop](#), [SCHURTER-Stock-Check](#), [Distributor-Stock-Check](#), [CAD-Drawings](#), [Accessories](#), [Wire Harnessing](#), [Detailed request for product](#)

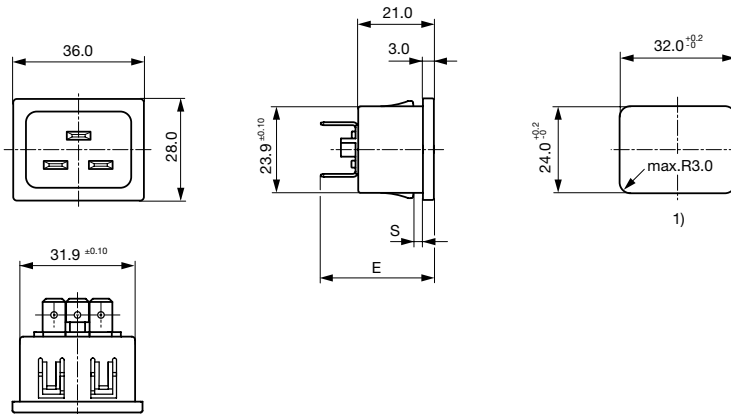
Newly available variants corresponding to V-Lock mating cordset. The connector is equipped with a notch intended for use with the latching cordset. The cord latching system prevents against accidental removal of the cordset.

Technical Data

Ratings IEC	16 A / 250 VAC; 50 Hz	Appliance Inlet	C20 acc. to IEC 60320,
Ratings UL/CSA	20 A / 250 VAC; 60 Hz		UL 498, CSA C22.2 no. 42 (for cold conditions) pin-temperature 70 °C, 16 A, Protection Class I
Dielectric Strength	> 2 kVAC between L-N > 2 kVAC between L/N-PE (1 min/50 Hz)		
Allowable Operation Temp.	-25 °C to 70 °C		
Degree of Protection	from front side IP 30 acc. to IEC 60529		
Protection Class	Suitable for appliances with protection class I acc. to IEC 61140		
Terminal	Solder terminals or quick connect terminals		
Panel Thickness s	Snap-in: 1/1.2/1.5/2/2.5/3 mm		
Material: Housing	Thermoplastic, black, UL 94V-0		

Dimensions

4793



1) Panel cut-out

E: Solder terminals: 28.5 mm

E: Quick connect terminals 6.3 x 0.8 mm: 31.5 mm

All Variants

Panel mounting	Panel Thickness s [mm]	Terminal	Order Number	
Snap-in	1	Quick connect terminals 6.3 x 0.8 mm	4793.3000	■
Snap-in	1.2	Quick connect terminals 6.3 x 0.8 mm	4793.8000	■
Snap-in	1.5	Quick connect terminals 6.3 x 0.8 mm	4793.4000	■
Snap-in	1.5	Quick connect terminals 6.3 x 0.8 mm	4793.4000.21	
Snap-in	2	Quick connect terminals 6.3 x 0.8 mm	4793.5000	■
Snap-in	2	Quick connect terminals 6.3 x 0.8 mm	4793.5000.21	
Snap-in	2.5	Quick connect terminals 6.3 x 0.8 mm	4793.6000	
Snap-in	3	Quick connect terminals 6.3 x 0.8 mm	4793.7000	
Snap-in	1	Solder terminals 3.8 x 0.8 mm	4793.3200	
Snap-in	1.2	Solder terminals 3.8 x 0.8 mm	4793.8200	
Snap-in	1.5	Solder terminals 3.8 x 0.8 mm	4793.4200	■
Snap-in	2	Solder terminals 3.8 x 0.8 mm	4793.5200	
Snap-in	2.5	Solder terminals 3.8 x 0.8 mm	4793.6200	
Snap-in	3	Solder terminals 3.8 x 0.8 mm	4793.7200	

■ Most Popular.

Availability for all products can be searched real-time: <http://www.schurter.com/en/Stock-Check/Stock-Check-SCHURTER>

Suffix ".21" corresponds to the version with V-Lock mating cordset. The connector is equipped with a notch intended for use with the latching cordset. The cord latching system prevents against accidental removal of the cordset.

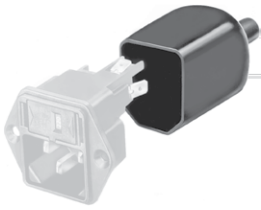
Articles for enhanced glow wire test requirements acc. IEC 60695-2-12 and -13 can be ordered with ending ".15" (xxxx.xxx.15). They are suitable for the use in unattended household equipment acc. IEC 60335-1.

Packaging unit

100 Pcs

Accessories

Description



Assorted Covers
Rear Cover



Wire Harness
Wire harness for SCHURTER products



Cord retaining kits
Cord retaining strain relief

Mating Outlets/Connectors

Category / Description



[Connector Overview complete](#)

IEC Connector C19, Rewireable, Straight	0104U
IEC Connector C19, Rewireable, Angled	4790
IEC Connector C19, Rewireable, Straight	4795

[Connector further types to 4793](#)



[Power Supply or Interconnection Cord Overview complete](#)

Diverse Power Supply and Interconnection Cords 16 A	Cord Sets 15 A
---	----------------

[Power Supply or Interconnection Cord further types to 4793](#)