

# MODEL KSM22E

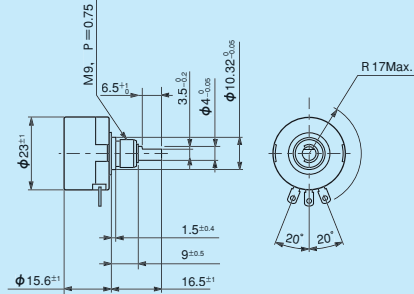
- Inductance Type
- Bushingmount
- Low-cost Item
- RoHS Compliant

## ● Standard Dimensions



Model KSM22E-5

### ■ Model KSM22E-5 Model KSM22EI-5



- Note: 1) The above drawing shows the position of shaft flattened at the ratio value of 50%.  
 2) 1 pc. each of inner teeth washer and hex nut are attached.  
 3) Please duly note that inner construction may burn out when applying the voltage to the wrong terminals except input terminal.

## ● Standard Model Numbers

Bushingmount type	KSM22E-5
	KSM22EI-5

## ● General Specifications

Model NO.	KSM22E	KSM22EI
Current Consumption	Approx. 3.5mA	
Independent Linearity Tolerance	±0.5%FS (FS=100°)	
Mechanical Rotating Angle	360° (Endless)	
Effective Electrical Angle	±50° (100°)	
Applied Voltage	5V.D.C.	
Load Resistance	10 k Ω min.	
Output Voltage Range	Approx. 10%~90% Vin · FS (FS=100°)	
Output Temperature Characteristic	Within ±2.5% Vout · FS	
Drift at Center Position	Within ±0.5% Vout · FS	
Operating Temperature Range	-40°C ~ +105°C	
Storage Temperature Range	-40°C ~ +105°C	
Mass	Approx. 15g	
Starting Torque mN · m (gf · cm)	Within 1 (10)	Within 3 (30)

## ● Environmental Specifications

Model NO.	KSM22E	KSM22EI
Thermal Shock	5 cycles -50°C ~ +105°C	
Exposure at Low Temperature	24 hours at -50°C	
Exposure at High Temperature	1,000 hours at +105°C	
Moisture Resistance	40°C 95%RH 120 hours	
Vibration	10~2,000Hz 196m/s <sup>2</sup> 12 hours	
Shock	980m/s <sup>2</sup> (18 times)	
Life Expectancy (shaft revolutions)	Approx. 100,000,000	Approx. 10,000,000

1-Turn ▶ Contactless type ▶ Inductance type