

Double-handle controller D3



The double-handle controller D3 is a robust switching device for nautical navigation applications. The modular design enables the switching device to be used universally. The double-handle controller is resistant to oil, maritime conditions e.g. offshore /vessels, UV radiation typically from the sun.



1

Technical data

Mechanical life D3	12 million operating cycles
Operation temperature	-40°C til +60°C
Degree of protection	IP66 front

	D3	S5	Q / Q	- 2 R P	+ 3 R P	- B	- A05 P214	- A050 P214	- E1292	- X
Basic unit	D3									
Control-handle extended	S5 -20mm									
Grip- control handle left	Q T-grip									
Grip- control handle right	Q T-grip									
Axis 1 (direction 1-2)	2 2 contacts (1,5A 24V DC13)									
	R Friction brake									
	P Potentiometer									
Axis 2 (direction 3-4)	3 3 contacts (1,5A 24V DC13)									
	R Friction brake									
	P Potentiometer									
Cover housing	B Cover housing									
Description axis 1 (direction 1-2)	A05 Arrangement MSP21									
	P214 Potentiometer T246 2x5kOhm									
Description axis 2 (direction 3-4)	A050 Arrangement MSP21-0									
	P214 Potentiometer T246 2x5kOhm									
Interface	E1292 Voltage output 0...5...10V									
Special model	X Special / customer-specific									

Technical details may vary based on configuration or application! Technical data subject to change without notice!

Double-handle controller D3

Combination possibilities with our handles



D3 S5 Q / Q - 2 R P + 3 R P - B - A05 P214 + A050 P214 - E1292 - X

Basic unit

D3

Control-handle extended*

Standard 148mm

S5 -20mm

S8 +20mm

*Only available in combination with handle!

Grip - control-handle left

Knob

D Push button

Q T-grip

QD T-grip with push button side

Grip - control-handle right

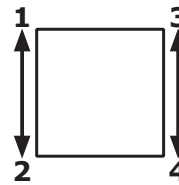
Knob

D Push button

Q T-grip

QD T-grip with push button side

Identification of the installation variants with switching directions:



D3

1

D3 S5 Q / Q - 2 R P + 3 R P - B - A05 P214 + A050 P214 - E1292 - X

Axis 1: direction 1-2 left

1	1 contact	Standard contact- arrangement see page 112		
2	2 contacts	z.B.		
3	3 contacts	A98	MS0	
		A05	MS21	
		A050	MS21-0	
		<i>A99 contact - arrangement according customer request</i>		
R	Friciton brake			
(P)	Mounting options for potentiometer and (Gessmann-types)			
P	Potentiometer	P211	T246 2x0,5kOhm	I max. 1mA
		P212	T246 2x1kOhm	I max. 1mA
		P214	T246 2x5kOhm	I max. 1mA
		P215	T246 2x10kOhm	I max. 1mA
		<i>More potentiometer on demand!</i>		
	Hall-Potentiometer	P42	T1003	0,5...2,5...4,5V / 4,5...2,5...0,5V

If both axis identical, it`s enough to describe one axis!
 example: ...A05P214 + A05P214 => A05P214

D3 S5 Q / Q - 2 R P + 3 R P - B - A05 P214 + A050 P214 - E1292 - X

1

Axis 2: direction 3-4 left			
1	1 contact	Standard contact- arrangement see page 112	
2	2 contacts	z.B.	
3	3 contacts	A98	MS0
		A05	MS21
		A050	MS21-0
		<i>A99 contact - arrangement according customer request</i>	
R	Friction brake		
(P)	Mounting options for potentiometer (Gessmann-types)		
P	Potentiometer	P211	T246 2x0,5kOhm max. 1mA
		P212	T246 2x1kOhm max. 1mA
		P214	T246 2x5kOhm max. 1mA
		P215	T246 2x10kOhm max. 1mA
		<i>More potentiometer on demand!</i>	
	Hall-Potentiometer	P43	T1003 0,5...2,5...4,5V/4,5...2,5...0,5V

D3 S5 Q / Q - 2 R P + 3 R P - B - A05 P214 + A050 P214 - E1292 - X

Cover housing	
B	Cover housing
Interface <i>(description the following pages)</i>	
	Potentiometer output
E1xx	Voltage output
E2xx	Current output
Special model	
X	Special / customer-specific

Voltage outputs			
Supply voltage	11,5-32V DC		
Wiring	Cable 500mm long with plug (male) CPC 17 - 14-pole		
0...5...10V per axis	1 axis	E129	<input type="checkbox"/>
	2 axis	2	<input type="checkbox"/>
10...0...10V per axis	1 axis	E141	<input type="checkbox"/>
	2 axis	2	<input type="checkbox"/>
-10...0...+10V per axis	1 axis	E140	<input type="checkbox"/>
	2 axis	2	<input type="checkbox"/>
<i>Voltage output with other value on request!</i>			

Technical details may vary based on configuration or application! Technical data subject to change without notice!

Double-handle controller D3

Current outputs

Supply voltage	18-36V DC		
Wiring	Cable 500mm long with plug (male) CPC 17 - 14-pole		
4...12...20mA per axis		1 axis	E209 1
20...4...20mA per axis		1 axis	E217 1

Attachments

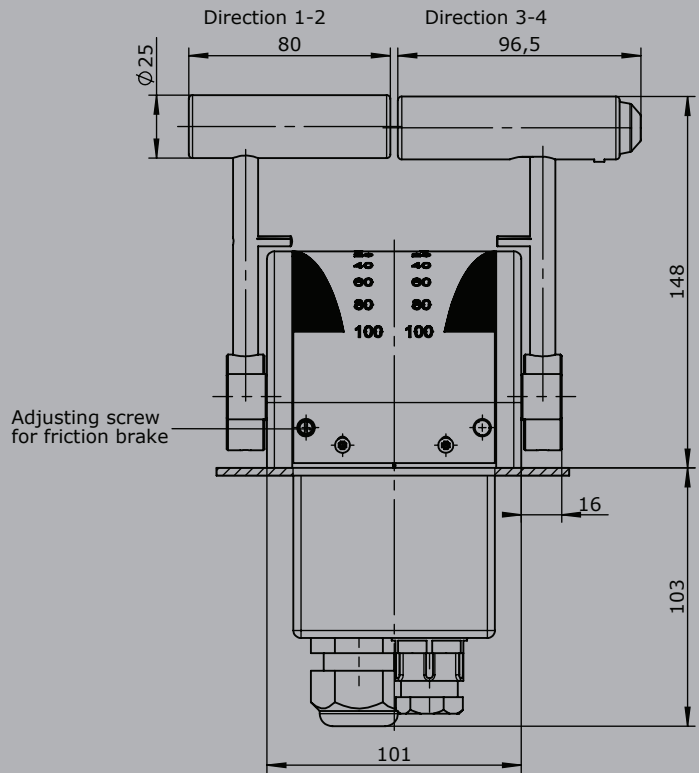
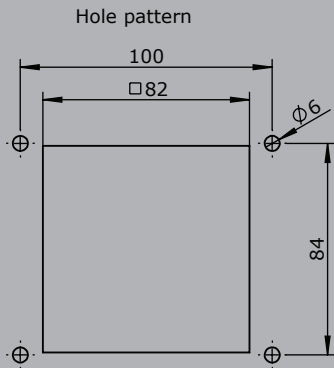
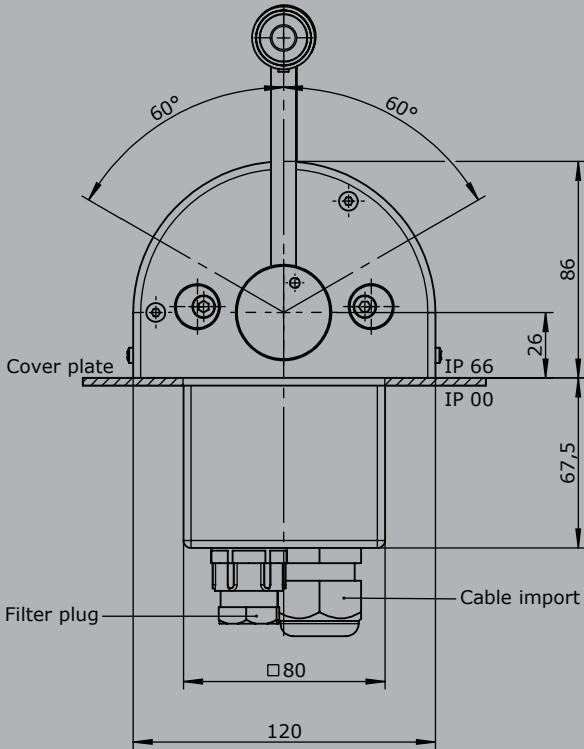
Mating connector AMP CPC 17 14-pole (female contact)	5300000211	
Mating connector AMP CPC 17 14-pole (female contact) with 2m cable	5300000213	

1

Double-handle controller D3

T- grip
D=Push button

1



Knob solid
D= Push button

