

CXA-0315

Dimming/Connector Type

■ Features

- 4-output
- UL60950 approved
- Applicable panel size*: 15 to 17 inches
- With brightness control function (Pulse Wide Modulation mode).
- With shut down function.
- In the high-voltage generator(a terminal and a pattern),
an anti-dust measure by silicone application is taken.
(Notice) Applicable panel size becomes a standard.

■ Applications



CXA-0315 Specifications (Please refer to each specification before use)

Electrical Characteristics

Item	Unit	Symbol	Specification			Condition					Remark
			min	typ	max	Vin(V)	Vrmt(V)	Vbr(V)	Ta(°C)	RL(kΩ)	
Output Current	mA	Iout (Maximum dimmer)	7.0	7.5	8.0	12±1.2	5	0	23±5	80	(*1)
			6.5	7.5	8.5	12±1.2	5	0	0 to +60	80	(*1)
		Iout (Maximum dimmer)	3.0	4.0	5.0	12±1.2	5	Duty(High) 65%	0 to +60	80	(*1)
Input Current	A	Iin1	-	2.0	2.5	12±1.2	5	0	0 to +60	80	Remote ON
	mA	Iin2	-		1.0	12±1.2	0		0 to +60	80	Remote OFF
Frequency	kHz	Freq	40	45	50	12±1.2	5	0	0 to +60	80	
Open Circuit Voltage	Vrms	Vopen	1700	1800	-	12±1.2	5	0	0 to +60	∞	Open load

(*1) Please refer to the connection diagram for details of a dimming method.

Other Specifications

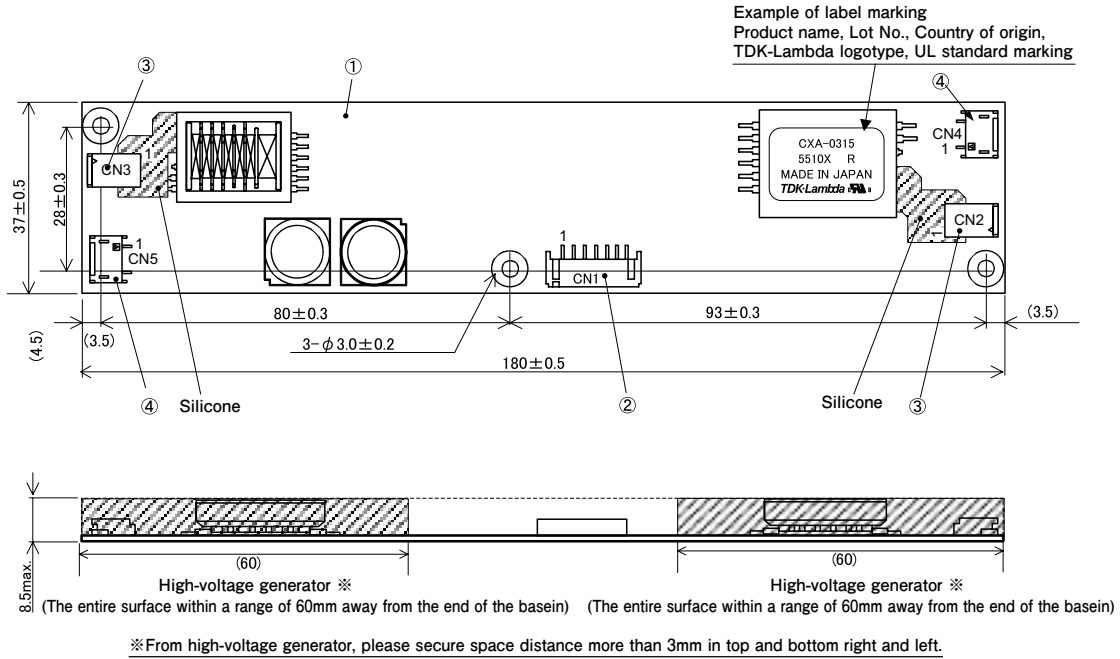
Dimming Function		Yes
Operating Temperature	°C	0 to +60
Storage Temperature	°C	-30 to +85
Operating Humidity Ratio	RH%	95Max
Safety Standard		UL60950
Weight	g	44
Dimensions(WxDxH)	mm	180x37x8.5 (*2)
Fused Input		Yes
Remote ON / OFF		Yes
Alarm Signal Function		No
Shutdown Function		Yes
Silicone Coating on High Voltage Area		Yes

(*2) These dimensions are indicated the maximum only H. Others are typical values.

■ Conformity to RoHs Directive

This means that, in conformity with EU Directive 2002/95/EC, lead, cadmium, mercury, hexavalent chromium, and specific bromine-based flame retardants, PBB and PBDE, have not been used, except for exempted applications.

Outline Drawing



unit:mm

Connector

Connector number	Part number	Model/Material	Quantity	Remarks	Recommended applicable connector
①	Printed circuit board PCB	Composit (CEM-3)	1	UL94V-0 t=1.0	—
②	Input connector CN1	S7B-PH-SM4-TB (LF) (SN)	1	JST Mfg. Co., Ltd.	PHR-7
③	Output connector CN2,3	SM02B-BHSS-1-TB (LF) (SN)	2	JST Mfg. Co., Ltd.	BHSR-02VS-1
④	Output connector CN2,3	SM02 (4.0)B-BHS-1-TB (LF) (SN)	2	JST Mfg. Co., Ltd.	BHR-02VS-1

Terminal Numbers And Functions

Input side CN1

Terminal number	Symbol	Rated voltage	Remarks
CN1-1	Vin	12±1.2V	Power input
CN1-2			
CN1-3	GND	0V	GND
CN1-4			
CN1-5	Vbr	0 to 5V	Dimmer terminal
CN1-6	N.C.	—	N.C.
CN1-7	Vrmt	0V/2.5V to Vin	Remote terminal 0 to 0.4V : OFF 2.5 to Vin : ON

Output side CN2

Terminal number	Symbol	Rated voltage	Remarks
CN2-1	V _{HIGH1}	700Vrms	Output 1
CN2-2	V _{HIGH2}	700Vrms	Output 2

Output side CN3

Terminal number	Symbol	Rated voltage	Remarks
CN3-1	V _{HIGH3}	700Vrms	Output 3
CN3-2	V _{HIGH4}	700Vrms	Output 4

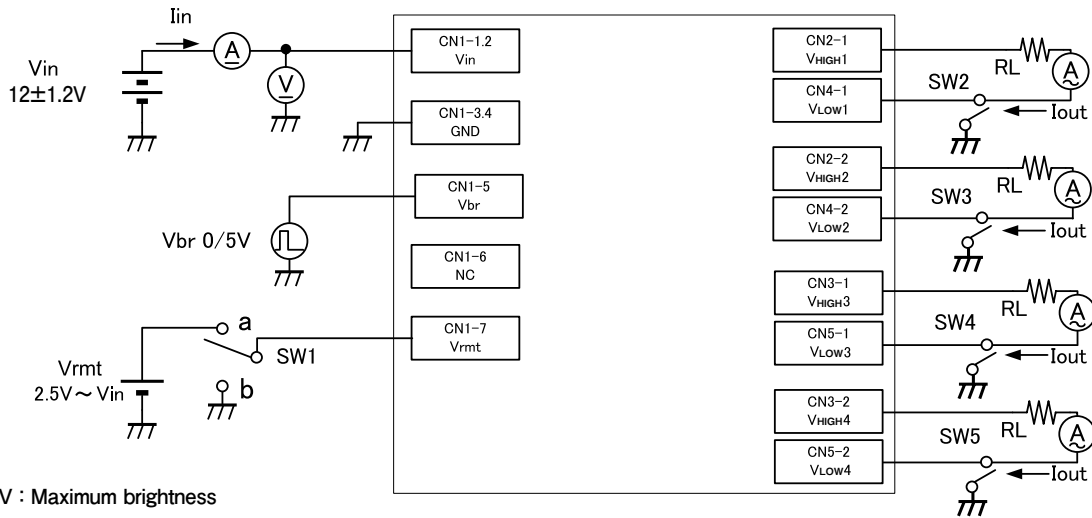
Output side CN4

Terminal number	Symbol	Rated voltage	Remarks
CN4-1	V _{Low1}	(2V)	Output 1 return
CN4-2	V _{Low2}	(2V)	Output 2 return

Output side CN5

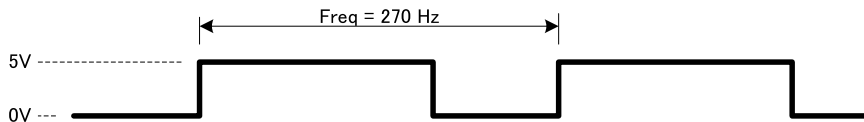
Terminal number	Symbol	Rated voltage	Remarks
CN5-1	V _{Low3}	(2V)	Output 3 return
CN5-2	V _{Low4}	(2V)	Output 4 return

Connections



Vbr=0V : Maximum brightness
 RL1 : Load resistance (7W minimum)

** Vbr condition: High (=5V) 65% , Low (=0V) 35%



Operate as follows by switching SW1.

SW1	Unit operation
a	Operation
b	Operation stopped
Open	Operation stopped

Protection circuit operation

Load condition	Shut-down function ^{※1}
Normal condition	Does not shut down
When 1 load (lamp) is run-out	Shut down
When 2 loads (lamps) are run-out	Shut down
When 3 loads (lamps) are run-out	Shut down
When 4 loads (lamps) are run-out	Shut down

※1: When lamp more than one of them was opened, stop operation in this inverter at about 2 second because it has included protective function.

MESSRS :

PRODUCT DRAWING

CUSTOMER'S PRODUCT NAME:

TDK PRODUCT NAME: DC/AC INVERTER UNIT
CXA-0315



TDK Electronics Europe GmbH

Power Systems Division

TDK House

5/7 Queensway

Redhill

Surrey, RH1 1YB

United Kingdom

Telephone : 0044 1737 781 365

Fax : 0044 1737 781 360

PREPARED BY	APPROVED BY	AUTHORIZED BY
<i>Nov. 13 , 2002 Y.Miyaoka</i>	<i>Nov. 13 , 2002 T.Domon</i>	<i>Nov. 13 , 2002 M.Yamada</i>

DWG.No.

CTR-0924-B

Precautionary Notes Regarding the Use of This Inverter

When using this product, give due consideration to the precautionary notes described below and ensure a safe design. Inappropriate use may result in electric shock, injury or fire.



Warning



- . This product is subject to high voltage. Do not touch it while the power is on. Failing to do so may result in electric shock.



Caution

- . This product is designed for the lighting of a Cold Cathode Fluorescent Lamp. Do not use it with any other load.
- . Store this product under the conditions defined in the specification document.
- . Do not store this product in an environment where dust, dirt or corrosive gas (saline, acid, alkali, etc.) is present.
- . This product is subject to high voltage. If there is a possibility that the user may touch the product, provide a proper indication in order to draw the user's attention.
- . This product is designed for use with general electronic equipment. If it is to be used with medical equipment that directly affects human life or for the control of transportation equipment to which passengers entrust their lives, provide thorough fail-safe measures.
- . Avoid using this product under high temperatures or high humidity or in an environment in which dust, dirt or any corrosive gas (saline, acid, alkali, etc.) is present. Also, be careful not to allow the formation of dew condensation. It may result in damage or electric shock.
- . If the product does not have a built-in protective circuit (circuit breaker, fuse, etc.), it is recommended that a fuse be used at the input stage to prevent the generation of smoke or fire in the event of a malfunction. Even when the product has a built-in protective circuit (circuit breaker, fuse, etc.), the circuit may not function properly due to inappropriate operating conditions or power-supply capacity. It is recommended that an appropriate protective circuit be provided separately from the built-in circuit.
- . Use the product only within the specified input voltage, output power, output voltage and operating temperature ranges. Exceeding these values may result in damage, etc.
- . Provide a measure for the prevention of surge voltage due to lightning, etc. Abnormal voltage may result in damage, etc.
- . To prevent problems arising from short-circuiting of the high-voltage section, provide appropriate measures to prevent the entry of foreign substances following installation.
- . This product is not designed to provide resistance to radiation.

Handling Precautions

- . This product uses thin wires. Observe the following precautions and handle it with care so as not to cause wire breakage. Broken wire may result in damage, etc.
- . Do not stack multiple products on top of one another.
- . Do not allow the product to come in contact with tools, etc.
- . Do not apply excessive stress during installation. It may cause chipping and cracking, resulting in damage, etc.
- . Provide a clearance of 2 mm or more between the high-voltage section of this product and the frame body on which the product is installed and also the conductor section (pattern , pad etc.).

	PRODUCT NAME or MODEL, TITLE		
	DC-AC INVERTER CXA-0315		
	NAME OF DRAWING	DRAWING No.	PAGE
TDK CORPORATION	PRODUCT DRAWING	CTR-0924-B	1

**.The specifications may be changed without any notice.
 .When placing orders,
 please confirm "Specifications" or Product Drawing" through TDK sales or distributors.**

.Features.

.This inverter is for four lamps. It has Dimming function and Remote function.

.This product has shutdown function.

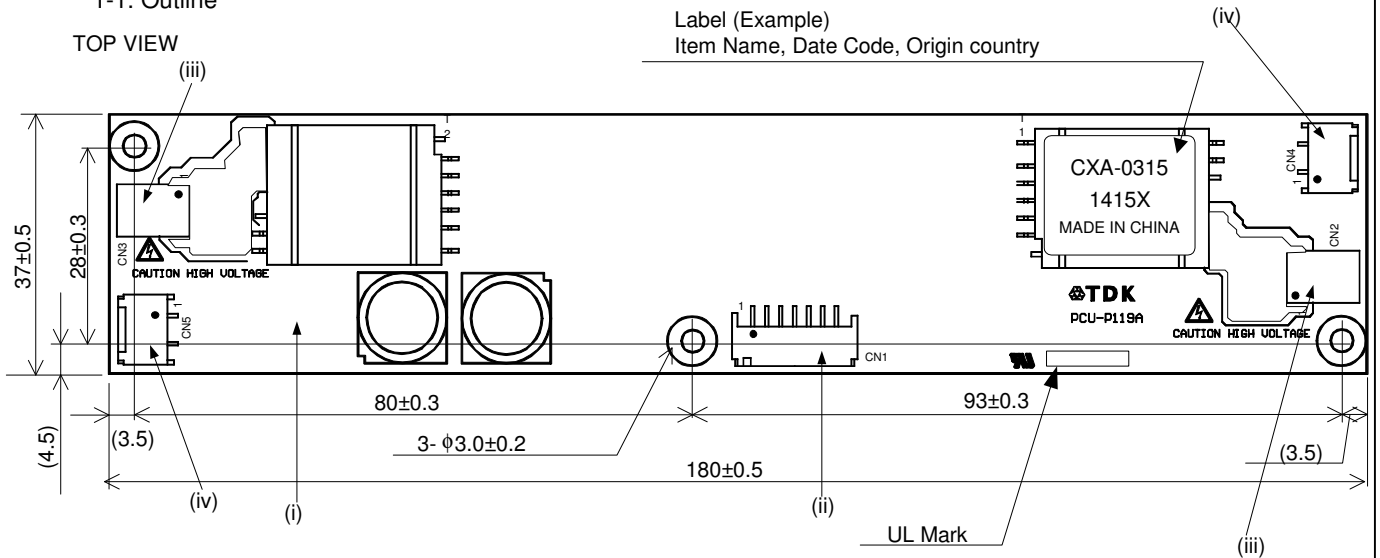
It shows an abnormal condition when the lamps open.

.The high-voltage area (terminals and patterns) is coated with silicone so as to avoid the defects caused by dust.

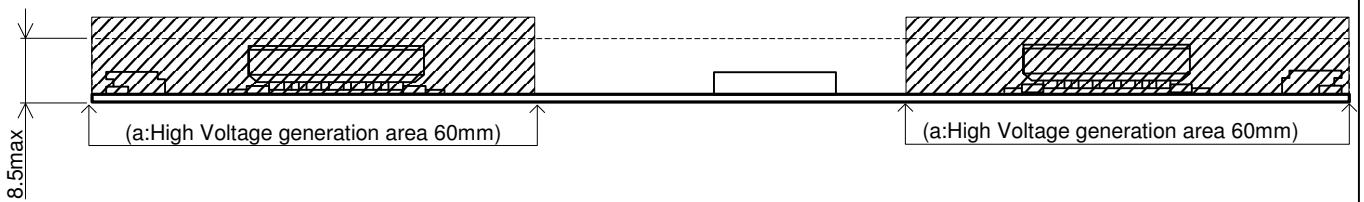
[1] Outline

1-1. Outline

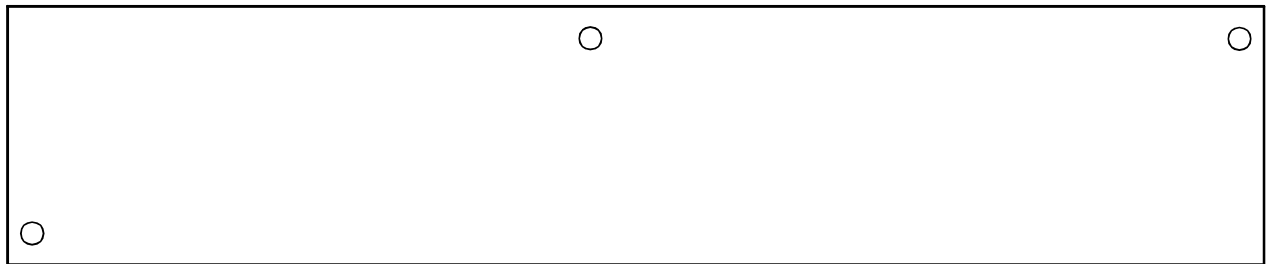
TOP VIEW



SIDE VIEW



BOTTOM VIEW



Unit:mm
Weight:44.0g.typ.

No.	Part Description	Material	QU	REMARK	MATES WITH
(i)	PCB	Composite (GEM-3)	1	UL94V-0 t=1.0	-
(ii)	Input Connector CN1	S7B-PH-SM3	1	JST	PHR-7
(iii)	Output Connector CN2,CN3	SM02B-BHSS-1	2	JST	BHSR-02VS-1
(iv)	Output Connector CN4,CN5	SM02(4.0)B-BHS-1	2	JST	BHR-02VS-1

PRODUCT NAME or MODEL, TITLE

DC-AC INVERTER CXA-0315

TDK CORPORATION

NAME OF DRAWING

PRODUCT DRAWING

DRAWING No.

CTR-0924-B

PAGE

2

1-2. Connection Configuration

Input side CN1

Pin No.	Symbol	Rating	Notes
CN1-1	Vin	10.8-13.2V	Input Voltage
CN1-2			
CN1-3	GND	0V	GND
CN1-4			
CN1-5	Vbr	0-5V	Control
CN1-6	NC	-	
CN1-7	Vrmt	0V/2.5V-Vin	Remote Input Voltage

Output side CN2

Pin No.	Symbol	Rating	Notes
CN2-1	VHIGH1	700Vrms	Output1
CN2-2	VHIGH2	700Vrms	Output2

Output side CN3

Pin No.	Symbol	Rating	Notes
CN3-1	VHIGH3	700Vrms	Output3
CN3-2	VHIGH4	700Vrms	Output4

Output side CN4

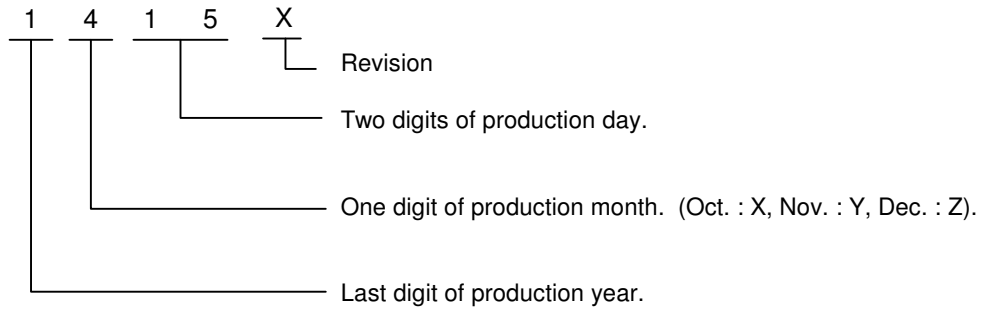
Pin No.	Symbol	Rating	Notes
CN4-1	VLOW1	(2V)	Output1 Return
CN4-2	VLOW2	(2V)	Output2 Return

Output side CN5

Pin No.	Symbol	Rating	Notes
CN5-1	VLOW3	(2V)	Output3 Return
CN5-2	VLOW4	(2V)	Output4 Return

Note1-1. Marking of TDK part No, Date code, Country of origin.

- 1) TDK part No., Date code, Country of origin, is marked on the transformer.
- 2) Date code example. (ex. APR. 15. 2001)



- 3) Country of origin code example. (ex. MADE IN JAPAN. MADE IN CHINA).

PRODUCT NAME or MODEL, TITLE			
DC-AC INVERTER CXA-0315			
TDK CORPORATION	NAME OF DRAWING	DRAWING No.	PAGE
	PRODUCT DRAWING	CTR-0924-B	3

Note1-2. For circuit connection, please refer to test circuit diagram [3].

Note1-3. Please use minimum of 2mm clearance (all directions) between inverter high voltage area and any conductors. Please refer to mechanical drawing for marking of high voltage area.

Note1-4. Open voltage (strike voltage) is measured across the transformer secondary winding at no load as the reading at the output connector would be less than the actual value.

Note1-5. If the start up voltage falls below Cold Cathode Tube strike voltage, the CCFL will not light up easily specially at lower ambient temperature. Please review mounting instruction to avoid any abnormal operation due to coupling/leakage capacitance of inverter high voltage area to any surrounding conductor.

Note1-6. Please check your lamp characteristic for minimum operational current and set the limit point in your design to avoid flickering and/or abnormal operation.

Note1-7. For proper operation of circuit protection (fuse or IC PROTECTOR), Please use minimum of 5A capacity for input power supply.

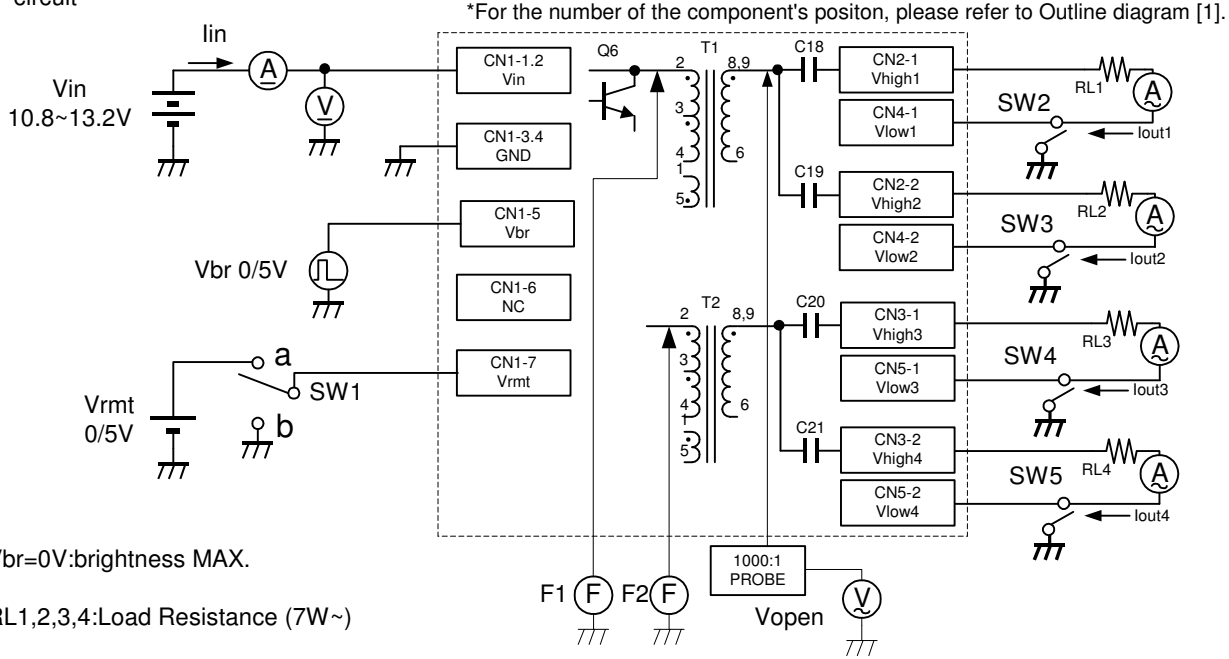
[2]Absolute maximum ratings

Item	Symbol	Specification	Unit	Notes
Input Voltage	Vin	0~14.4	V	
	Vrmt	0~Vin		
	Vbr	0~5.5		
Load Resistance	RL1,RL2 RL3,RL4	100	kΩ	
Operating Temp. range	Ta	0~60	°C	
Storage Temp. range	Ts	-30~85	°C	
Humidity range	RH	95	%RH	A maximum wet ball temperature is 38°C No dew.

PRODUCT NAME or MODEL, TITLE			
DC-AC INVERTER CXA-0315			
TDK CORPORATION	NAME OF DRAWING	DRAWING No.	PAGE
	PRODUCT DRAWING	CTR-0924-B	4

<The specifications may be changed without any notice.>

[3]Test circuit



Note3-1. SW1(ON/OFF) Operation is as following

SW1	Operation of unit
a	Operation
b	Non operation
Open	Non operation

Note3-2.Safety Function

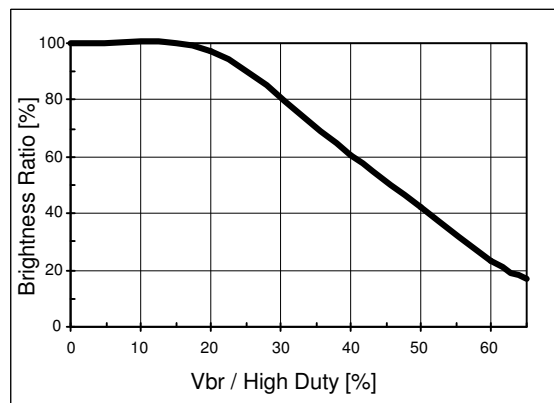
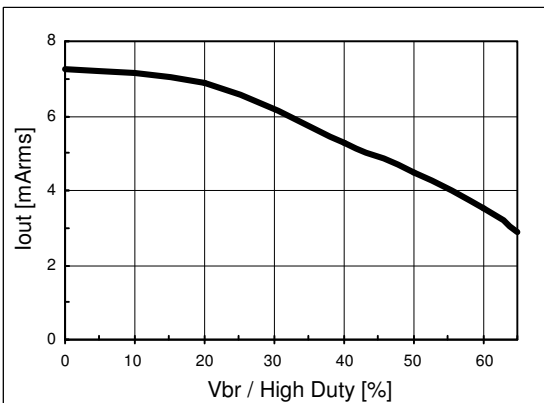
Load Condition	Shutdown Operation
Normal Operation	Normal
1 Lamp Open	Shutdown
2 Lamps Open	Shutdown
3 Lamps Open	Shutdown
4 Lamps Open	Shutdown

Note3-3.Test Equipments

- (V) Digital Multiple Meter(ADVANTEST R6451A or equivalent)
- (A) DC Current Meter(ADVANTEST R6451A or equivalent)
- (F) Frequency Counter(ADVANTEST R6451A or equivalent)
- (V) True RMS Meter(KEITHLEY 2001 or equivalent.)
- (A) High Frequency Current Meter(KEITHLEY 2001 or equivalent)

1000:1 High Voltage Probe(Tektronix P3000 or equivalent)

Dimming specifications(Reference) Vin = 12.0[v] / Load : Panel Mitsubishi Electric Corporation AA175TA01



PRODUCT NAME or MODEL, TITLE

DC-AC INVERTER CXA-0315

TDK CORPORATION

NAME OF DRAWING

PRODUCT DRAWING

DRAWING No.

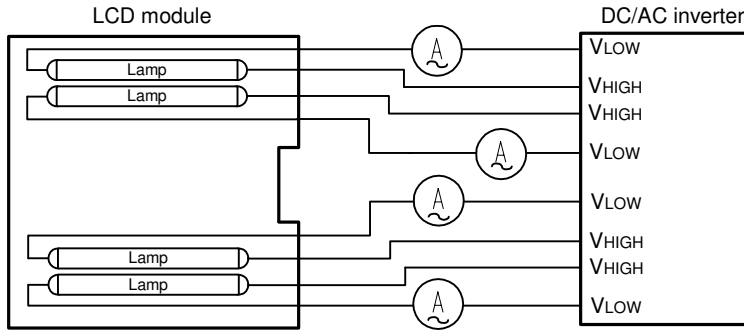
CTR-0924-B

PAGE

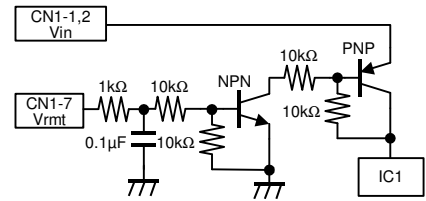
5

<The specifications may be changed without any notice.>

Connection diagram of LCD module (Reference)



Remote terminal circuit(Reference)

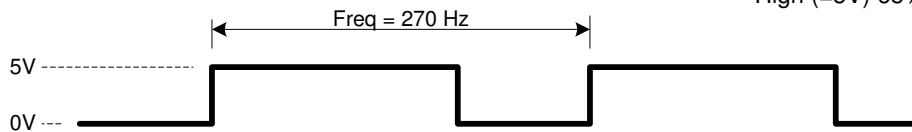


*Connect the High Frequency Current Meter to the Low-Voltage (VLow) side.

[4]Electrical specifications

Item	Symbol	Condition					Specifications			Unit
		Vin(V)	Vrmt(V)	Vbr	Ta(°C)	RL(kf)	MIN.	TYP.	MAX.	
Output Current (Brightness max.)	Io1,Io2, Io3,Io4	12±1.2	5±0.25	0V	0~60	80	6.5	7.5	8.5	mArms
		12±1.2	5±0.25	0V	23±5	80	7.0	7.5	8.0	
Output Current (Brightness min.)	Io1,Io2	12±1.2	5±0.25	**Duty(High) 65%	0~60	80	3.0	4.0	5.0	
Input Current1	Iin1	12±1.2	5±0.25	0V	0~60	80	-	2.0	2.5	A
Input Current2	Iin2	12±1.2	0	0V	0~60	80	-	-	1.0	mA
Frequency	F1/F2	12±1.2	5±0.25	0V	0~60	80	40	45	50	kHz
Open Circuit Voltage	Vopen 1/2	12±1.2	5±0.25	0V	0~60	∞	1.7	1.8	-	kVrms

** High (=5V) 65% , Low (=0V) 35%



[5]Reliability test

Following test items are assured.

Items	Conditions	Judgement
Low Temp.Non operational	-30°C 500h	Electrical and appearance should be in the specifications.
Low Temp.operational	0°C 500h Load Cond.: TYP.	
High Temp.Non operational	85°C 500h	
High Temp.operational	60°C 500h Load Cond.: TYP.	
Heat Shock	-20°C to 75°C 30min. Each 100 Cycles	
Humidity (Non operational)	40°C 90~95%RH 500h	
Humidity operational	40°C 90~95%RH 500h Load Cond.: TYP.	
Vibration	10~57Hz Amplitude 0.75mm 58~500Hz 1G Sweep :11min 60min each axis X,Y,Z	
Shock	100G 11ms Half-Sine Pulse 1 times each axis ±X,Y,Z	

PRODUCT NAME or MODEL,TITLE

DC-AC INVERTER CXA-0315

TDK CORPORATION

NAME OF DRAWING

PRODUCT DRAWING

DRAWING No.

CTR-0924-B

PAGE

6

<The specifications may be changed without any notice.>

[6]Packing and Marking

A shipping box is packaged to avoid from water or damage. Following items are printed on the box.

6-1. TDK part No. CXA-0315

6-2. Manufacture TDK

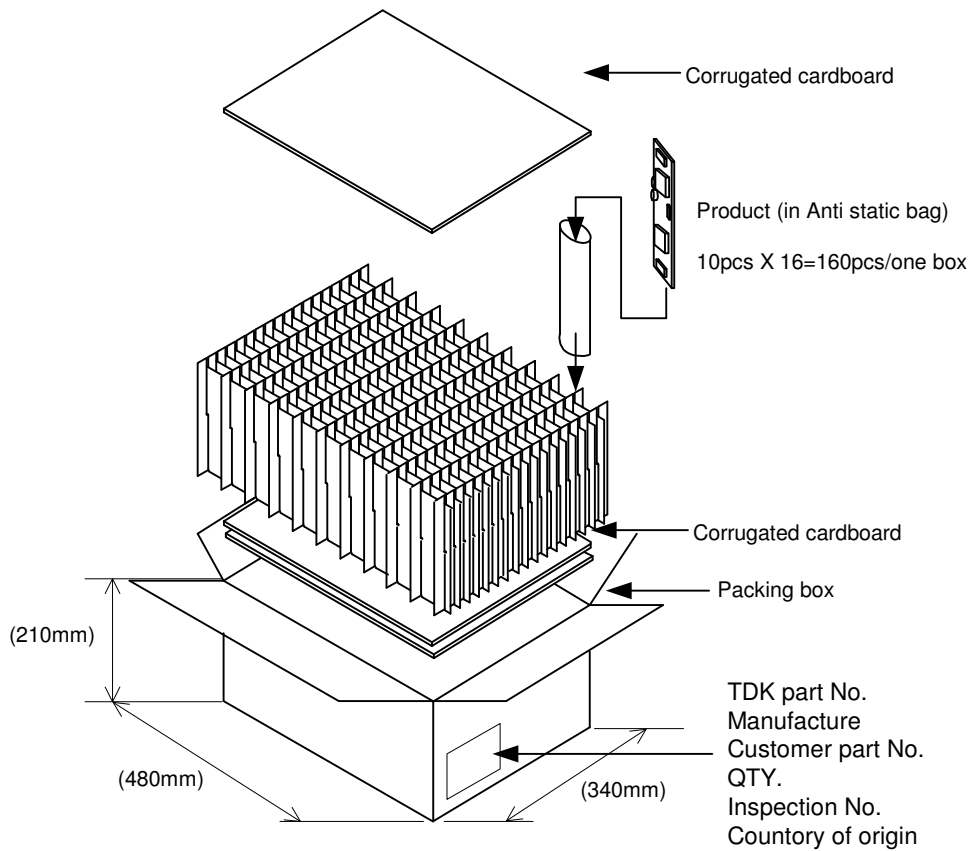
6-3. Customer part No.

6-4. QTY.

6-5. Inspection No.

6-6. Country of origin

Packing style as under Fig. (160 going in with a standard.)



[7]Others

7-1. Test cond.

A normal test condition :Temperature (20±15°C), Humidity (65±20%RH).

7-2. Std warantrny

One year after shipment.This covers any defects in material or workmanship.
Defective units will be replaces at no charge.

7-3. Others

TDK and customer are to discuss changes,problems, and modifications and etc, when needed.

PRODUCT NAME or MODEL,TITLE			
DC-AC INVERTER CXA-0315			
TDK CORPORATION	NAME OF DRAWING	DRAWING No.	PAGE
	PRODUCT DRAWING	CTR-0924-B	7