

GENERAL:

MODEL CPP-45-xxSX IS A CONDUCTIVE PLASTIC POTENTIOMETER WITH A GEAR HEAD ASSEMBLY. A COMBINATION OF THE SUPERB PERFORMANCE CHARACTERISTICS OF CPP-45 SERIES POTENTIOMETER AND PRECISION ASSEMBLY OF ANTI-BACKLASH HELICAL GEAR AND TWO SETS OF BALL BEARINGS ALLOW THE UNIT TO BE A PRECISION, ULTRA RELIABLE MULTI TURN POTENTIOMETER.

ELECTRICAL CHARACTERISTICS:

ELECTRICAL ANGLE: 350°
 TOTAL RESISTANCE: 1k, 2k, 5k, 10k and 20k OHMS
 RESIST. TOLERANCE: ±15%
 LINEARITY (INDEPENDENT): $\pm 0.3\%$ ($\pm 0.1\%$ AVAILABLE)
 REPEATABILITY: +0.03% (INCLUDING BACKLASH)
 POWER RATING: 3 WATTS @ 70°C
 INSULATION RESISTANCE : 100 meg OHMS MIN. @ 1,000 Vdc
 DIELECTRIC STRENGTH: 1,000 Vrms @ 50/60 Hz for 1 MINUTE

MECHANICAL SPECIFICATIONS:

GEAR (REDUCTION) RATIO:

- MODEL CPP-45-10SX 10 : 1
- MODEL CPP-45-14SX [®] 14 : 1
- MODEL CPP-45-18SX [®] 18 : 1
- MODEL CPP-45-24SX 24 : 1
- MODEL CPP-45-35SX 35 : 1
- MODEL CPP-45-60SX [®] 60 : 1
- MODEL CPP-45-100SX 100 : 1

TORQUE: 40 gm-cm (0.56 in-oz) MAX.
 WEIGHT: APPROX. 220 gm (8 oz)
 LIFE: 10 MILLION CYCLES MIN.

ENVIRONMENTAL SPECIFICATIONS:

OPERATING TEMPERATURE: -40 C° to +120°C
 VIBRATIONS: 15 Gs, 2,000 Hz
 SHOCK: 50Gs, 11 ms

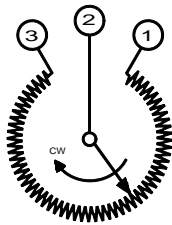


FIGURE 2 WIRING DIAGRAM

SYM	DESCRIPTION	DATE	DRAWN	APPR'D
A	1) was ±0.5%	05/06/02	T.TSUGAWA	
B	1) ADDED *-14SX, -18SX, -60SX*	03/03/07	T.TSUGAWA	

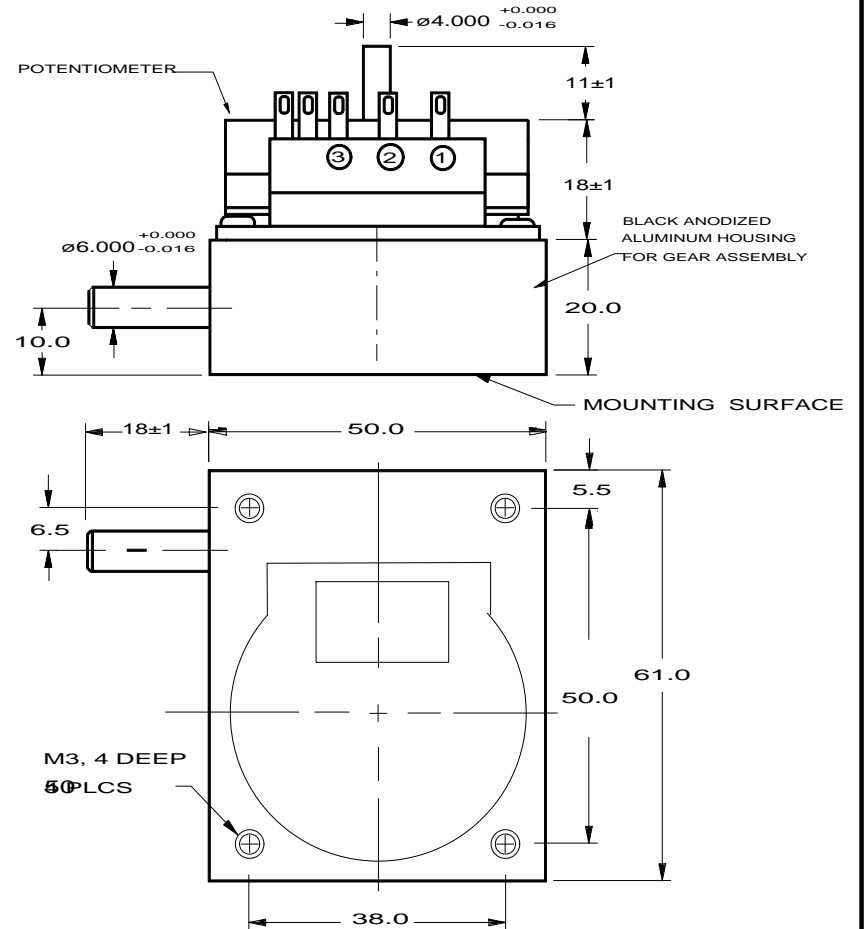


FIGURE 1 OUTLINE DIMENSION

UNLESS OTHERWISE SPECIFIED, DIMENSIONS ARE IN mm(in). TOLERANCES: ANGLES: ±1.5° <10 mm: ±0.25 <100 mm: ±0.5 >100 mm: ±1	DRAWN	DATE	SPECIFICATION DWG FOR MODEL CPP-45-xxSX POTENTIOMETER (WITH GEAR HEAD)	A-MAC-B91	B
	T.TSUGAWA	1/16/97			
	CHECKED	DATE		1 OF 1	
	APPROVED	DATE			
APPROVED	DATE	SCALE:	FILE: CPP-45-xxSX		