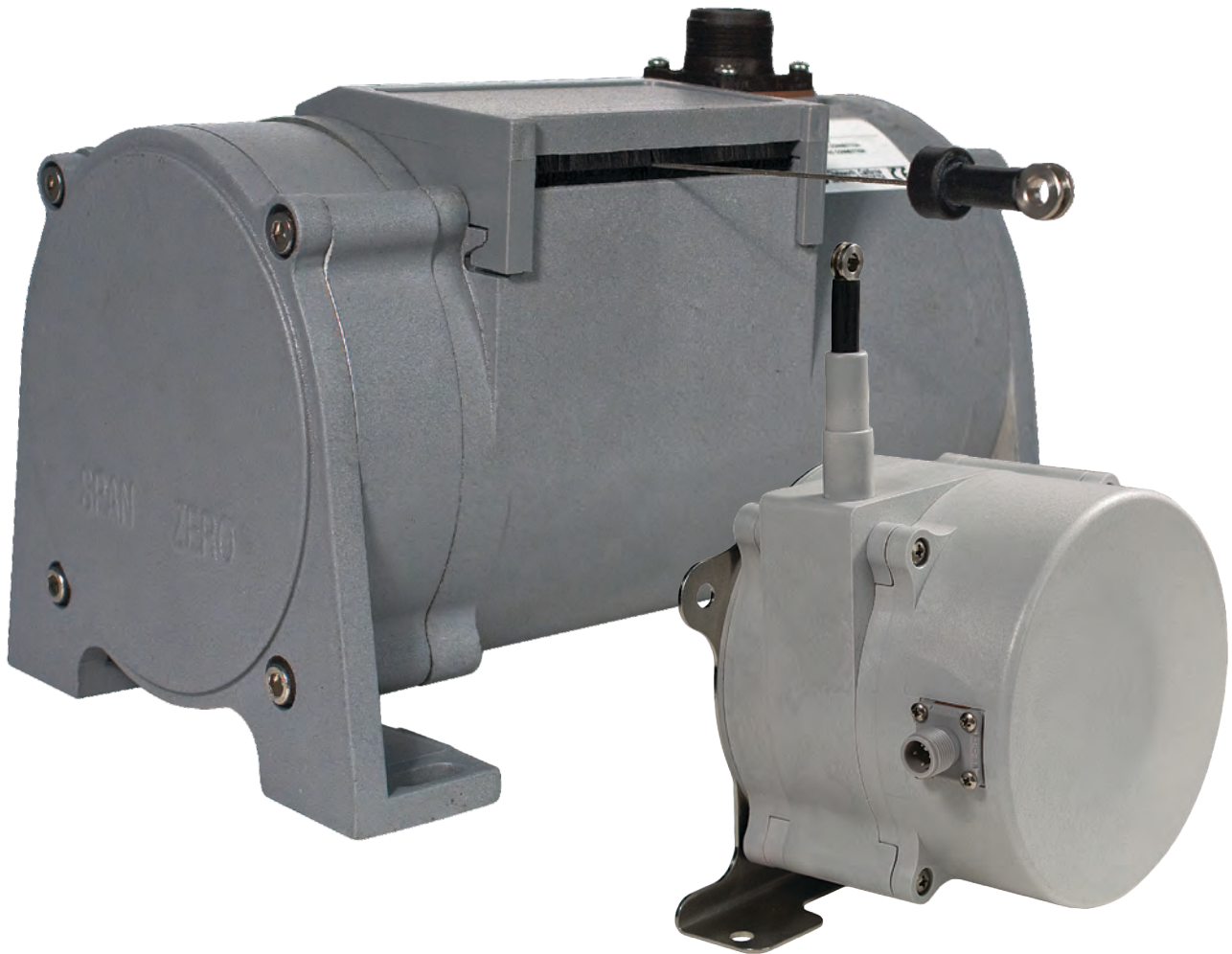


celesco

Cable Extension Position Transducers



ATI Systems

Committed to Quality

Head Office

011 383 8300

International: +27 11 383 8300

sales@atisystems.co.za - www.atisystems.co.za

159 Galjoen Rd, Wadeville, Germiston

Durban Branch

031 303 1587

International: +27 31 303 1587

sales@atisystems.co.za - www.atisystems.co.za

10 Ballance Rd, Windermere, Durban



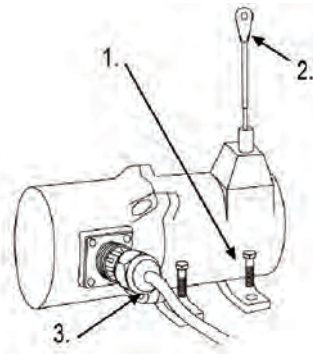
Management
System
ISO 9001:2008
www.tuv.com

Cable Position Transducers

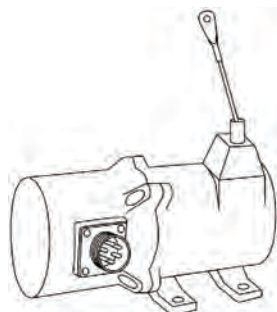
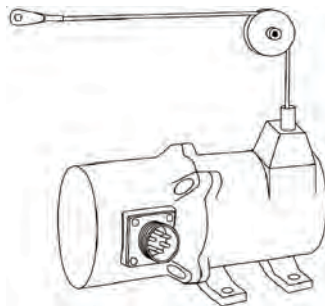
The Benefits of Celesco Industrial Grade Cable Extension Transducers

Easy to Install

1. Bolt transducer housing to fixed surface.
2. Attach measuring cable to moving object.
3. Make electrical connection.

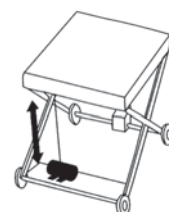
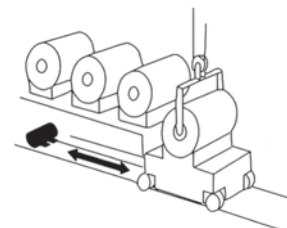
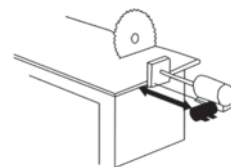
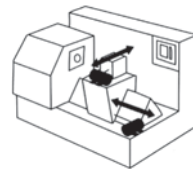
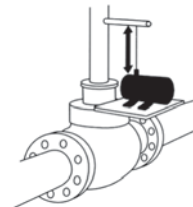
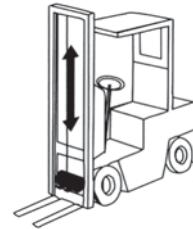


- Transducer can be mounted remotely from measurement location.
- Cable can be routed over pulleys or through conduit.
- Low mounting height, long measuring range.
- Perfect alignment not required.
- Quick delivery on most products.



Typical Installations

Celesco transducers are available in a wide variety of configurations, both electrically and mechanically, to fit specific application requirements. They are often used in application such as the ones shown below.



Cable Position Transducers



SM1/2

SM Series Cable Position Transducers

Model	Output	Duty	Span Adjustable	Length
SM1	Potentiometric	Industrial Duty	No	63 mm
* Solder Connection				190 mm
				304 mm
				635 mm
SM2	Potentiometric	Industrial Duty	No	63 mm
* 40" Electrical Cable				190 mm
				304 mm
				635 mm



SP 3



SE 1

SP Series Cable Position Transducers

Model	Output	Duty	Span Adjustable	Length
SP1	Potentiometric	Industrial Duty	No	120 mm
* Solder Connection				315 mm
				635 mm
				1270 mm
SP2	Potentiometric	Industrial Duty	No	120 mm
* 40" Electrical Cable				315 mm
				635 mm
				1270 mm
SP3	4-20mA or 0-10 Vdc	Industrial Duty	No	120 mm
* 40" Electrical Cable				315 mm
				635 mm
				1270 mm
SE1	Incremental Encoder	Industrial Duty	No	635 mm
* Solder Connection				1270 mm



SG 1



SGD

SG Series Cable Position Transducers

Model	Output	Duty	Span Adjustable	Length
SG1	Voltage Divider	Industrial Duty	No	2032 mm
* Solder Connection				3048 mm
SGD	4-20mA or 0-10 Vdc	Industrial Duty	No	2032 mm
* SGD requires 4 pin Micro Connector				3048 mm

Cable Position Transducers



SR1
Adjustable Mounting Bracket

SR1 Series Cable Position Transducers

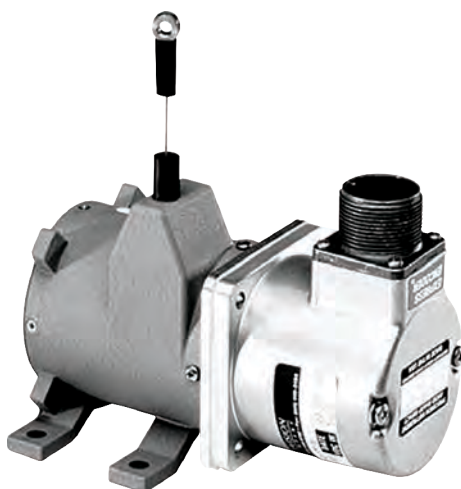
Model	Output	Duty	Span Adjustable	Length
SR1V	0-10 Vdc	Industrial Duty	Yes	3175 mm
				4445 mm
<i>* SR1 Series requires 4 pin Micro Connector</i>				
SR1E	Incremental Encoder	Industrial Duty	N/A	3175 mm
				4445 mm
<i>* SR1 Series requires 4 pin Micro Connector</i>				
SR1A	Voltage Divider	Industrial Duty	No	1575 mm
				3175 mm
				4445 mm
<i>* SR1 Series requires 4 pin Micro Connector</i>				
SR1M	4-20 mA	Industrial Duty	Yes	3175 mm
				4445 mm
<i>* SR1 Series requires 4 pin Micro Connector</i>				
SR1 Range comes standard with simple teach function and has an ingress protection of IP 67				



PT 8000 Series

PT8000 Series Cable Position Transducers - For Separate Encoder Mounting

Model	Output	Duty	Span Adjustable	Length
PT8101	Voltage Divider	Heavy Duty	No	500 mm
				1000 mm
				1500 mm
<i>* Includes Mating Connector</i>				
PT8150	Incremental Encoder	Heavy Duty	No	500 mm
				1000 mm
				1500 mm
<i>* Includes Mating Connector</i>				
PT8420	4-20 mA	Heavy Duty	Yes	500 mm
				1000 mm
				1500 mm
<i>* Includes Mating Connector</i>				
PT8510	0-10 Vdc	Heavy Duty	Yes	500 mm
				1000 mm
				1500 mm
<i>* Includes Mating Connector</i>				



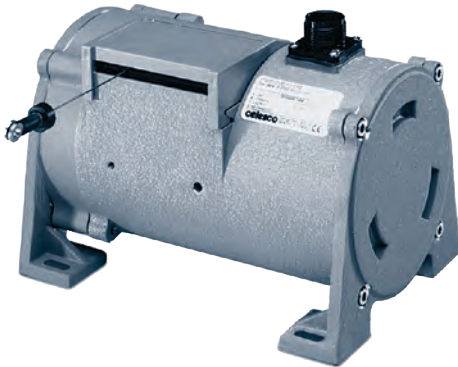
PT 8600 Series

PT8600 Series Cable Position Transducers

Model	Output	Duty	Span Adjustable	Length
PT8600	External Encoder	Heavy Duty	N/A	500 mm
				1000 mm
				1500 mm

Cable Position Transducers

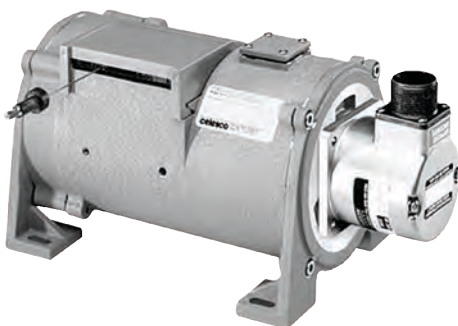
PT9000 Series Cable Position Transducers



PT 9000 Series

Model	Output	Duty	Span Adjustable	Length
PT9420	4-20 mA	Heavy Duty	Yes	2500 mm
* Includes Mating Connector				3800 mm
				5000 mm
				10000 mm
				15000 mm
PT9510	0-10 Vdc	Heavy Duty	Yes	2500 mm
* Includes Mating Connector				3800 mm
				5000 mm
				10000 mm
				15000 mm
PT9101	Voltage Divider	Heavy Duty	No	2500 mm
* Includes Mating Connector				3800 mm
				5000 mm
				10000 mm
				15000 mm
PT9150	Incremental Encoder	Heavy Duty	N/A	2500 mm
* Includes Mating Connector				3800 mm
				5000 mm
				10000 mm
				15000 mm

PT9600 Series Cable Position Transducers - For Separate Encoder Mounting



PT 9600 Series

Model	Output	Duty	Span Adjustable	Length
PT9600	External Encoder	Heavy Duty	N/A	2500 mm
				3800 mm
				5000 mm
				10000 mm
				15000 mm
PT9000 Series available in strokes up to 42 meters and ingress protection up to IP 68				



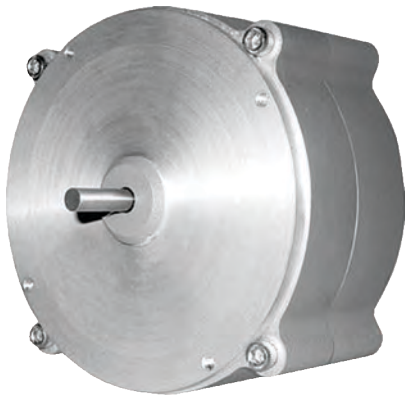
Rotary Sensors & Inclinometers



RT 8000 Series

RT8000 Series Rotary and Angle Sensors

Model	Output	Duty	Span Adjustable	Turns
RT8101	Voltage Divider	Heavy Duty	No	0.5 (180°)
* Includes Mating Connector				1 (360°)
				10
RT8420	4-20 mA	Heavy Duty	Yes	0.5 (180°)
* Includes Mating Connector				1 (360°)
				10
RT8510	0-10 Vdc	Heavy Duty	Yes	0.5 (180°)
* Includes Mating Connector				1 (360°)
RT8000 Series available from 0,125 turns up to 200 turns				10



RT 9000 Series

RT9000 Series Rotary and Angle Sensors

Model	Output	Duty	Span Adjustable	Angle
RT9101	Voltage Divider	Industrial Duty	No	0.5 (180°)
* Includes Mating Connector				1 (360°)
				10
RT9420	4-20 mA	Industrial Duty	Yes	0.5 (180°)
* Includes Mating Connector				1 (360°)
				10
RT9510	0-10 Vdc	Industrial Duty	Yes	0.5 (180°)
* Includes Mating Connector				1 (360°)
RT9000 Series available from 0,125 turns up to 50 turns				10

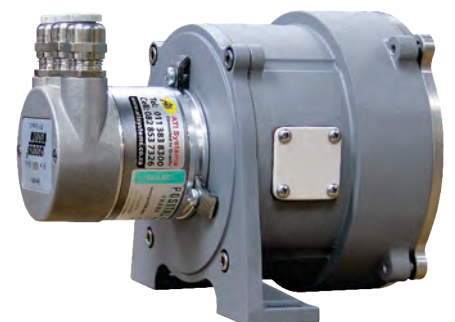


IT 9000 Series

IT9000 Series Inclination Sensors (Inclinometers)

Model	Output	Duty	Span Adjustable	Angle
IT9101	Voltage Divider	Heavy Duty	No	45°
* Includes Mating Connector				90°
				180°
				240°
IT9420	4-20 mA	Heavy Duty	Yes	45°
* Includes Mating Connector				90°
				180°
				240°

The Celesco Inclinometer is compatible with any Encoder or Rotary Transducer on the market



Celesco Inclinometer with Profibus Fraba Encoder