

ASSEMBLY INSTRUCTIONS RHEOSTAT TANDEM COUPLING KITS

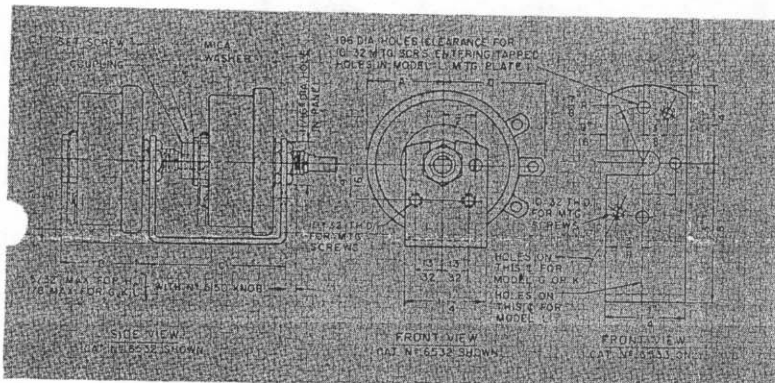
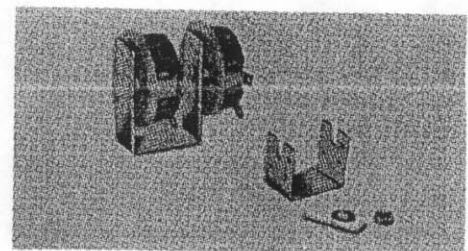
Instructions for Tandem Kits No. 6532 or 6533 (Models H, J, G, K, L)

Note: Kit 6532 will also accommodate G, K, or L in rear position; 6533 can also accommodate H or J in rear position.

(1) Assemble the front rheostat on the frame. See that the tip of the locating washer is in the hole provided (for Models H, J, G, and K) before tightening the mounting nut. Do not loosen the nut which is against the rheostat base. (For the Model L, see that the tapped holes in the rheostat mounting-plate, line up with the clearance holes in the frame; this assembly mounts the panel by means of these holes.) For the Model G, K, and L frame, the slot is open to left looking from panel end.

(2) Turn the shaft of both rheostats so the flat is up (toward open side of frame).

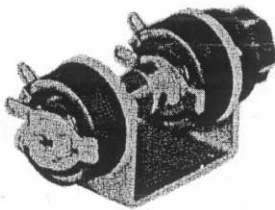
(3) Loosen the mounting nut of the second (rear) rheostat until it is held by only one turn. Put the coupling on the shaft with the set screw on the flat, but leave slightly loose. Put the mica washer on the coupling. Slide the rheostat into the frame and then push it forward so that the end of the shaft enters the back of the hub of the front rheostat. See that the locating washer is in the hole provided. Push the coupling forward firmly so that the projections are in the slots in the driving hub. (On Model L only, use the two hex head screws for fastening the rear rheostat to the bracket.) Tighten the mounting nut of the rheostat and tighten the set screw in the coupling.



Cat. No.	Rheo. Model	A	B	C	D
6532	H	2 ⁵ / ₃₂	1 ³ / ₈	2 ⁵ / ₃₂	1 ⁵ / ₁₆
	J	1 ⁵ / ₃₂	1 ³ / ₈	2 ⁵ / ₃₂	1 ¹ / ₁₆
6533	G	1 ³ / ₈	1 ³ / ₄	2 ⁹ / ₁₆	1 ² / ₃₂
	K	1 ¹ / ₁₆	1 ³ / ₄	2 ⁹ / ₁₆	1 ² / ₃₂
	L	2	2*	2 ⁹ / ₁₆	2 ⁷ / ₃₂

*2 inch overall depth of Rear Rheostat as measured to contact form.

Instructions for Tandem Kit No. 6591 (Model E)



(1) Place rear rheostat on frame with locating nib in hole provided. Leave mounting hex nut loose, approximately 1 to 2 turns.

(2) Position contact on upper lug. Place coupling on shaft.

(3) Place mica washer on coupling.

(4) Position contact on front rheostat same as rear rheostat. Place rheostat in frame and locate non-turn nib in hole provided.

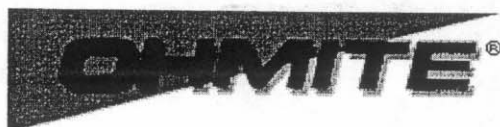
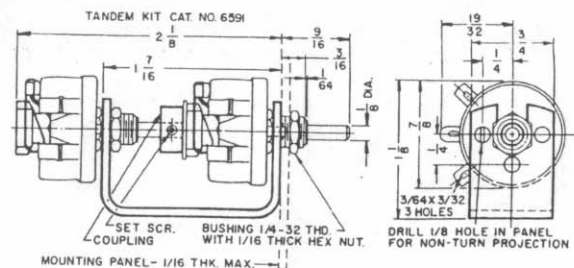
(5) Push coupling forward firmly so that projections definitely engage driving hub of front rheostat with mica washer between hub and coupling.

(6) Tighten set screw in coupling and hex nut of rear rheostat.

(7) Mount assembly on panel so that non-turn nib is located in the 1/8" diameter hole in the panel.

(8) Tighten hex nut.

(9) Check spring arm and contact alignment and retighten coupling as required.



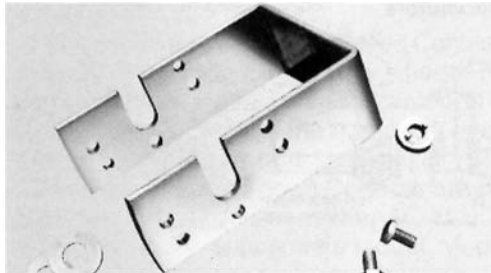
Ohmite Mfg. Co.
1600 Golf Road
Suite 850
Rolling Meadows, IL 60008

Ph 847-258-0300
Fax 847-574-7522
www.ohmite.com
info@ohmite.com

Rheostat and Tap Switch Hardware

Knobs, Dials, Mounting Fasteners

RHEOSTAT TANDEM COUPLING KITS



Ohmite coupling kits permit tandem mounting of two rheostat units. A coupling fastens to the shaft of the back unit; projections on the coupling engage the recesses in the driving hub of the front unit.

Each kit consists of a steel "U" frame, a coupling with set screw, mica washer, allen wrench and instructions.

Part No.	Front mount models	Rear mount models	Max. panel thickness
✓ 6532	H, J	H, J, G, K, L	5/32"
✓ 6533	G, K, L	H, J, G, K, L	1/8"
❖ 6591	E	E	1/16"

RHEOSTAT REPAIR KITS



Electrical contact replacement kit. Kit includes contact/slip ring assemblies (for round and ribbon wire rheostats), copper graphite washer, spring arm and hub. Instructions included.

Part No.	Rheostat model
✓ 7070	P
✓ 7071	N
✓ 7072	R
✓ 7074	U

EXTRA MOUNTING HARDWARE

Kit contains 25 each, nuts and lock washers for panel mounting units.

Part No.	For model
✓ 7090	E
✓ 7091	H, J, G, K, L, 111, 212, 711

- ✓ = Standard values
- ❖ = Non-standard values subject to minimum handling charge per item

KNOB S



Finger grip with pointer

Finger grip without pointer

Handwheel with pointer



Handwheel without pointer

Finger grip

Bar knob, 1.5" long

Any knob can be used with any rheostat and tap switch model which has the corresponding shaft diameter. Knobs are fastened to shafts with slotted set screws.

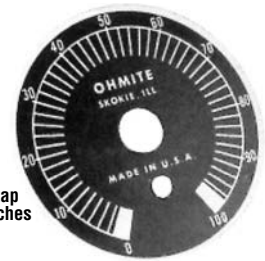
Slotted set screw	Hex socket set socket	Description	Knob dia.	Hole dia.	Fits model
❖ 5102	—	Bar knob, 2 1/4" long	—	1/4"	H, J, G, K, L
✓ 5103	✓ 5103A	Bar knob, 1 1/4" long	—	1/4"	H, J, G, K, L
✓ 5104	✓ 5104A	Handwheel with pointer	3 1/4"	3/8"	P, N, R, U
✓ 5105	—	Handwheel without pointer	3 1/4"	3/8"	P, N, R, U
✓ 5106	❖ 5106A	Handwheel with pointer	3 1/4"	1/4"	H, J, G, K, L
❖ 5107	—	Handwheel without pointer	3 1/4"	1/4"	H, J, G, K, L
✓ 5109	✓ 5109A	Finger-grip with pointer	1 5/8"	1/4"	H, J, G, K, L
✓ 5110	❖ 5110A	Finger-grip without pointer	1 5/8"	1/4"	H, J, G, K, L
✓ 5111	✓ 5111A	Finger-grip with pointer	1 1/4"	1/4"	H, J, G, K, L
❖ 5112	❖ 5112A	Finger-grip without pointer	2 3/8"	1/4"	H, J, G, K, L
✓ 5116	❖ 5116A	Bar knob, 1 1/2"	—	1/4"	H, J, G, K, L
✓ 5150	❖ 5150A	Finger-grip	1 1/2"	1/4"	H, J, G, K, L
✓ 5151	—	Finger-grip	3/4"	1/8"	C, E
—	✓ 5152A	Like 5104 (shorter pointer)	3 1/4"	1/4"	H, J, G, K, L

DIALS

Handsomely finished, black-enameled, aluminum dials for Ohmite rheostats and tap switches. Figures and lines are etched on a black background for contrast and ease of readability. On rheostat dials, divisions indicating approximate percentage of rheostat resistance in circuit are marked from 0 to 100. On tap switch dials, Number of dial positions are identical with number of switch positions.



For rheostats



For tap switches

Part No.	For model	For knob	Dial dia.
✓ 5007	C, E	5151	1 1/4"
✓ 5000	H, J, G, K, L	5150, 5116, 5103	2 3/16"
✓ 5001	P, N, R, U	5104, 5106	5 1/2"
✓ 5002-*	111, 212 (single), 312 (single)	5109, 5116, 5150	2 3/4"
✓ 5003-*	212 (tandem), 312 (tandem), 412	5111, 5152A	3 3/4"
✓ 5004-*	608	5104	5 1/2"

* Specify number of positions as suffix.