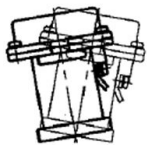
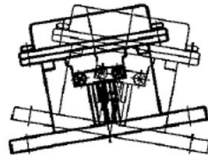


-30° (4mA) +30° (20mA)



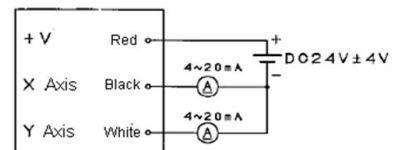
Y AXIS

+30° (20mA) -30° (4mA)

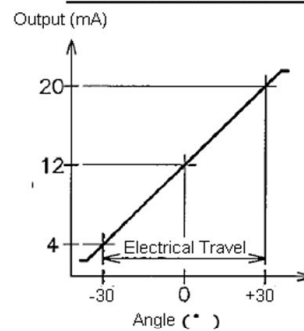


X AXIS

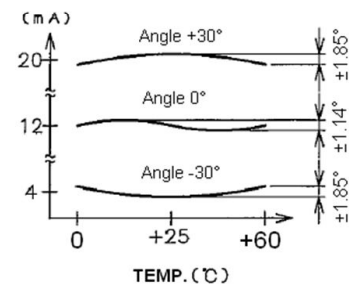
SCHEMATIC



OUTPUT CHARACTERISTICS



TEMP. CHARACTERISTICS (BASED +25°C)



SPECIFICATIONS

- Electrical Travel : ±30°
- OUTPUT CHARACTERISTIC : 4~20mA
- LINEARITY : ±1.1% FS (FS=60°)
- INPUT VOLTAGE : DC 24V ± 4V
- INSULATION RESISTANCE : 100M Ω MIN. DC 500V
- DIELECTRIC STRENGTH : AC 500V 1minute
- DAMPER OIL : SILICON OIL (200cSt)
- OPERATING TEMP. : -20~+80 °C
- STRAGE TEMP. : -20~+80 °C

PMP-30TZL-A

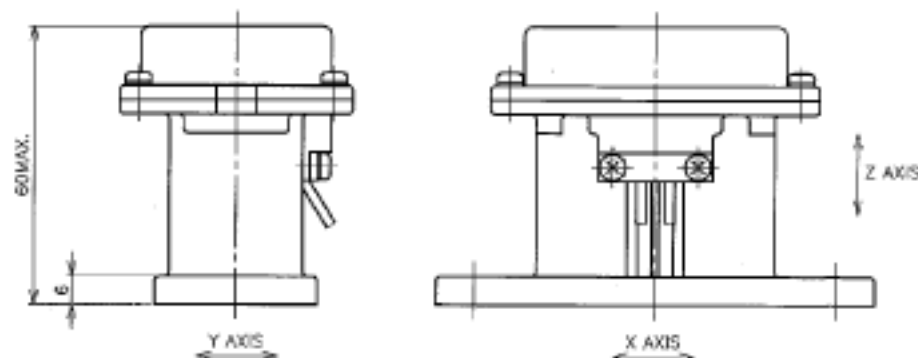
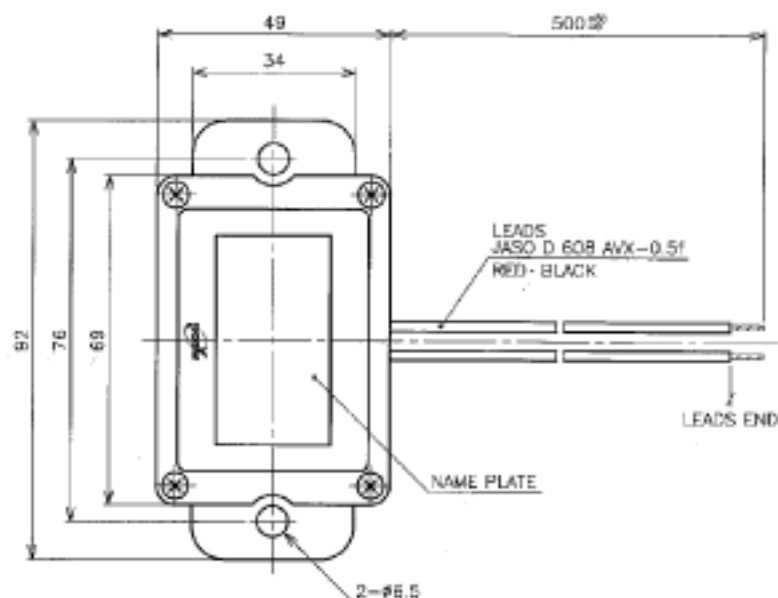


FIGURE 1
OUTLINE DIMENSIONS

FIGURE 2
OUTPUT CHARACTERISTICS

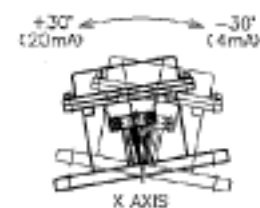
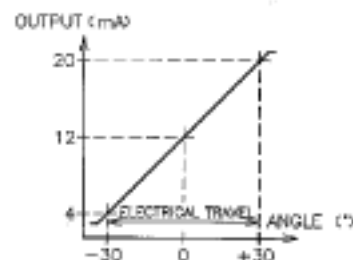
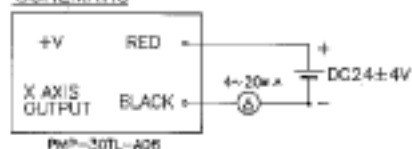
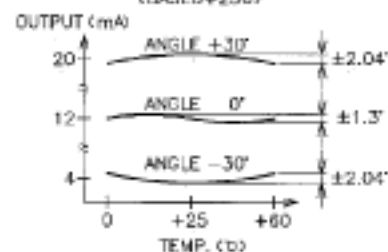


FIGURE 3
SCHEMATIC



• RED AND BLACK
INDICATE LEADS COLORS

FIGURE 4
TEMP. CHARACTERISTICS
(BASED +25°C)

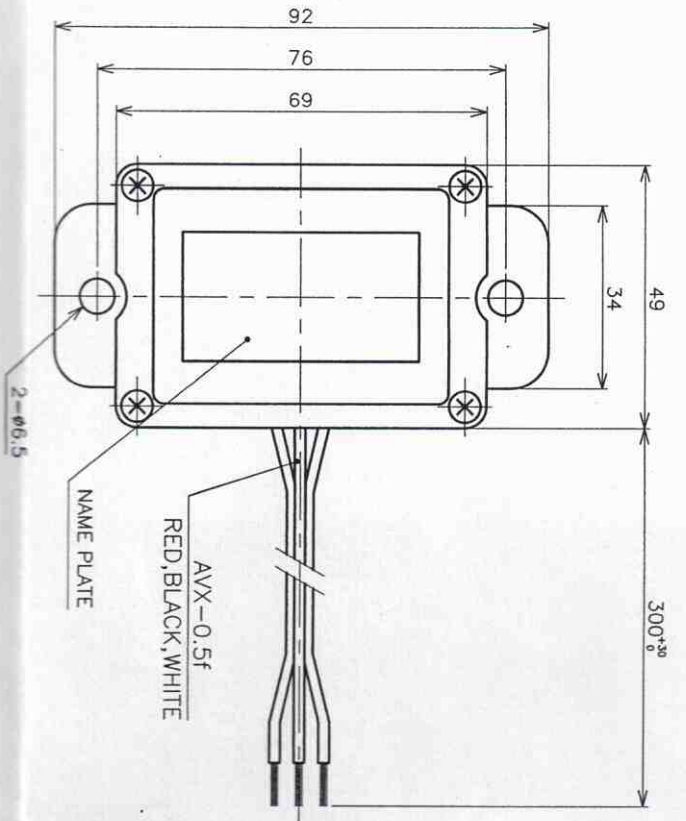


SPECIFICATIONS

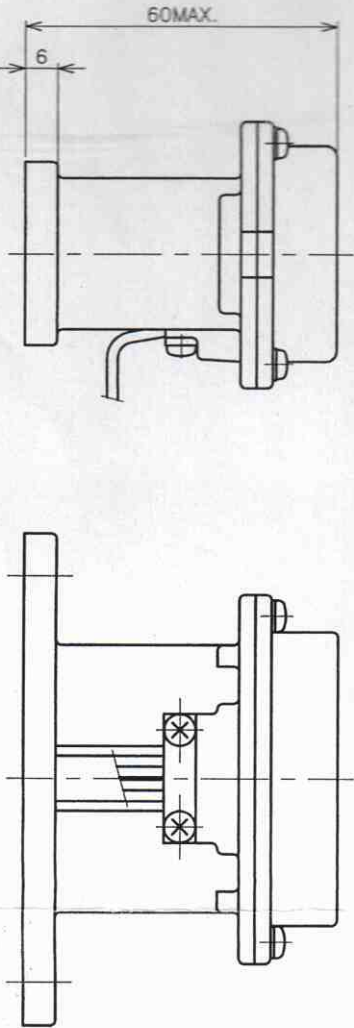
ELECTRICAL TRAVEL	: ±30° (X AXIS)
ABSOLUTE LINEARITY	: ±1.1%FS (FS=60°) (X AXIS)
OUTPUT CHARACTERISTICS	: SEE FIGURE 2
INPUT VOLTAGE	: DC24V±4V
LOAD RESISTANCE	: 600Ω MAX. (INCLUDING TRANSMITTING WIRE RESISTANCE) AT DC24V (X AXIS)
INSULATION RESISTANCE	: 100MΩ MIN. DC500V
DIELECTRIC STRENGTH	: AC500V 1 MINUTE
TEMP. CHARACTERISTICS	: SEE FIGURE 4
SILICON OIL	: 200mm ³ /s
OPERATING TEMP.	: 0~60°C
STORAGE TEMP.	: -20~80°C
WATER PROOF	: IP65 (EXCEPT LEADS END)
MASS	: APPROX. 2.30g
ACCESSORIES	: FLEXIBLE TUBE (BLACK) LENGTH=500±10 1PT.

DRAWING FOR APPROVAL		SPEC. NO.	
MODEL: PMP-30TL-A06			
APPROVED	TOLERANCE	DATE	MIDORI PRECISIONS CO., LTD.
1.27.97 H. Yoshimichi	±1.0 ±0.25	1.27.97	
1.27.97 K. Yoshino	33 ± 0.10 ±0.5	SCALE	1:1
	100 ± 0.10	DRAWING	REV. 01
	ANGLE ±1.5'	REVISION	
			B-MPE-B53

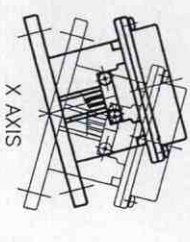
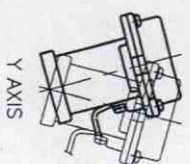
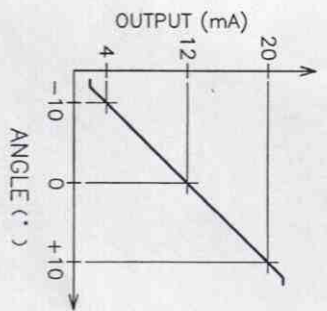
REV.	DATE	DESCRIPTION	DRAWN	CHECK



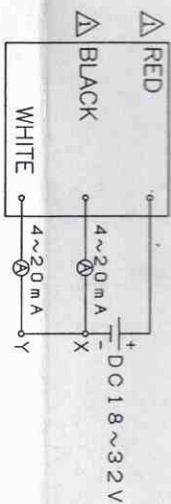
△ FIGURE 1
OUTLINE DIMENSIONS



△ FIGURE 2
OUTPUT CHARACTERISTICS



△ FIGURE 3
SCHEMATIC



SPECIFICATIONS

- △ ELECTRICAL TRAVEL : ±10°
- △ OUTPUT CHARACTERISTIC : SEE FIGURE 2
- △ INPUT VOLTAGE : DC 18~32V
- LOAD RESISTANCE : 600Ω MAX./DC 24V
- INSULATION RESISTANCE : 100MΩ MIN./DC 500V
- DIELECTRIC STRENGTH : AC 500V/1MINUTE
- △ ABSOLUTE LINEARITY : ±1.1%FS (FS=20°)
- △ DAMPER OIL : SILICON OIL (200mm²/s/25°C)
- OPERATING TEMP. : -20~+80°C
- STORAGE TEMP. : -40~+80°C

Neigungsgeber, Typ PMP-10TZL-A-SW2 ± 10° ±, 2-achs sig
Inklinometer (Tiltsensor) IP65 (IP67), Speisung 18..32VDC, Ausg. 4..20mA

△	4.26.'00	CHANGED : 8 ITEMS	ADD'N : 5 ITEMS	M. T. g.	T. N.
REV	DATE	DESCRIPTION	DRAWN	CHKD	