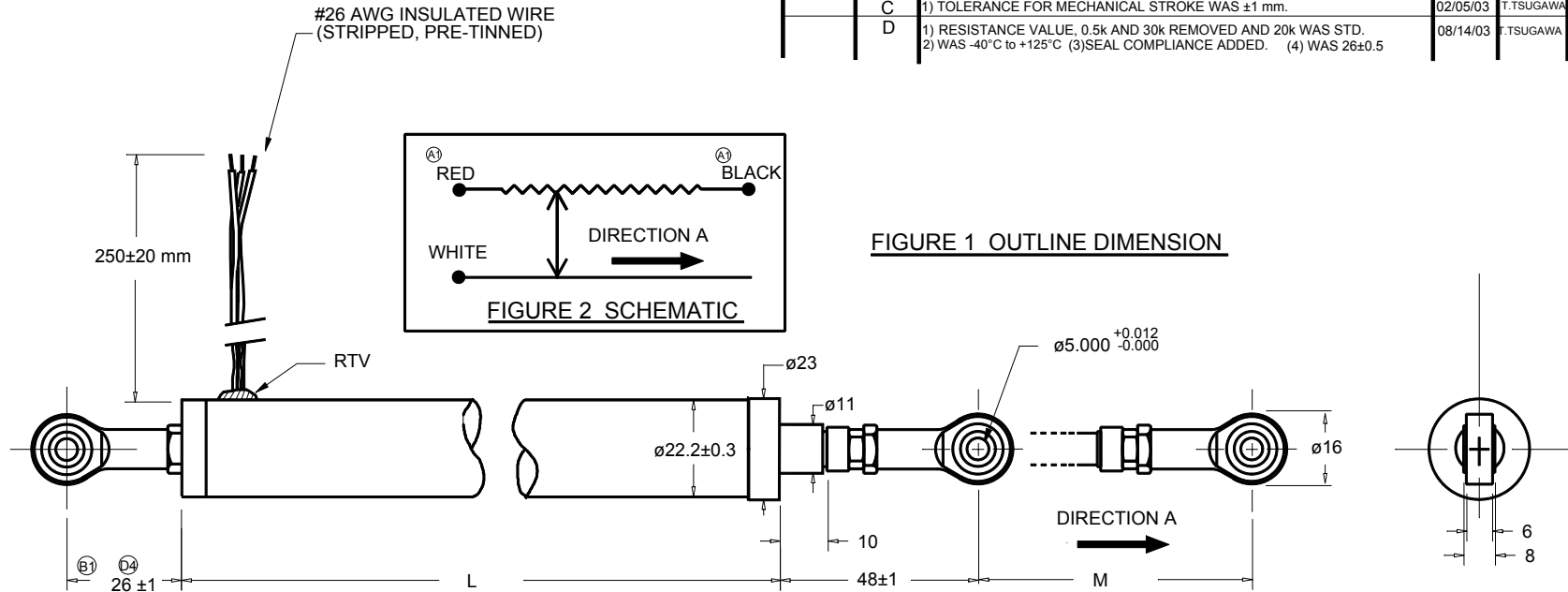


REFERENCE:

REVISION

C.O.N	SYM	DESCRIPTION	DATE	DRAWN	APPR'D
	A	1) FIGURE 2: RED---BLACK WAS BLACK---RED (DWG ERROR CORRECTION).	7/23/97	TSUGAWA	NAKAMURA
	B	1) WAS "26".	6/24/99	T.TSUGAWA	
	C	1) TOLERANCE FOR MECHANICAL STROKE WAS ±1 mm.	02/05/03	T.TSUGAWA	
	D	1) RESISTANCE VALUE, 0.5k AND 30k REMOVED AND 20k WAS STD. 2) WAS -40°C to +125°C (3)SEAL COMPLIANCE ADDED. (4) WAS 26±0.5	08/14/03	T.TSUGAWA	



SPECIFICATIONS

MODEL NO.:	LP-100F-65	LP-150F-65	LP-200F-65	LP-250F-65	LP-300F-65	LP-400F-65
ELECTRICAL STROKE:	100 mm	150 mm	200 mm	250 mm	300 mm	400 mm
MECH. STROKE ( M ): ⑬	103 ±2 mm	153 ±2 mm	203 ±2 mm	253 ±2 mm	303 ±2 mm	403 ±2 mm
⑭ RESISTANCE in KOHMS (±20%):	1, 2, 5, 10	1, 2, 5, 10	1, 2, 5, 10 (20 AVAILABLE)	2, 5, 10 (20 AVAILABLE)	2, 5, 10 (20 AVAILABLE)	5, 10
POWER RATING:	2.5 W @ 70°C	3 W @ 70°C	4 W @ 70°C	4 W @ 70°C	4 W @ 70°C	4.5 W @ 70°C
HOUSING LENGTH ( L ):	145 ±1mm	195 ±1mm	245 ±1mm	295 ±1mm	345 ±1mm	445 ±1mm
INDEPENDENT LINEARITY:	±0.3% (±0.1% AVAILABLE)	±0.3% (±0.1% AVAILABLE)	±0.3% (±0.1% AVAILABLE)	±0.3% (±0.1% AVAILABLE)	±0.3% (±0.1% AVAILABLE)	±0.1%
OUTPUT SMOOTHNESS:	0.1% MAX.					
SEALED CONSTRUCTION:	INTERNAL "O"RING SEAL AT SHAFT SIDE AND POTTED RTV AT WIRE EXIT.					
⑮ SEAL COMPLIANCE:	IP54					
INSULATION RESISTANCE:	100 meg OHMS MIN. @ 500 Vdc					
DIELECTRIC STRENGTH:	500 Vrms @ 50/60 Hz for 1 MINUTE					
OPERATING TEMPERATURE:	⑯ -40°C to +80°C					
TEMPERATURE COEFFICIENT:	±400 ppm/°C MAX.					
FRICTION:	400 gf MAX.					

UNLESS OTHERWISE SPECIFIED, DIMENSIONS ARE IN mm(in).  
TOLERANCES:  
ANGLES: ±1.5°  
<10 mm: ±0.25  
<100 mm: ±0.5  
>100 mm: ±1

DRAWN T. TSUGAWA	DATE 4/17/97
CHECKED Y. NAKAMURA	DATE 4/20/97
APPROVED	DATE
APPROVED	DATE
SCALE:	

SPECIFICATION DWG FOR  
MODEL LP-xxxF-65  
LINEAR POTENTIOMETER  
SPHERICAL ROD ENDS  
SEALED CONSTRUCTION

A-MAC-C06	D
1 OF 1	