

### SPECIFICATIONS

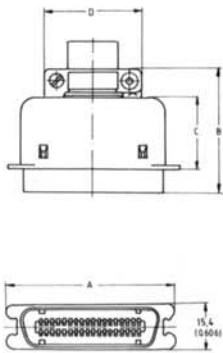
Current Rating: 5 A  
 Electric Rating: AC 500 Vrms  
 Contact Material: Phosphor Bronze  
 Contact Plating: Gold over Nickel  
 Contact Resistance: 25 mΩ max. 100 mA DC  
 Insulator Material: PBT + 30% Fiber Glass, UL 94 V-0  
 Insulation Resistance: 1000 MΩ min. 500 V DC  
 Withstanding Voltage: 1200 V AC rms / 1 min.  
 Shells: Nickel plating on steel base  
 Temperature Rating: -55°C to +125°C  
 Proper Wire: Single wire 0.65 mm or AWG 22  
 Twisted pair 0.22 mm or AWG 24

### FEATURES

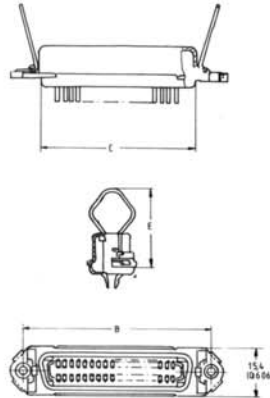
- A range of metal shell connectors most commonly used for IEEE488 and printer interface connections.
- Metal shell for EMI shielding and grounding.
- Sockets have spring clips fitted; the plugs have solder buckets and are supplied complete with metal covers.



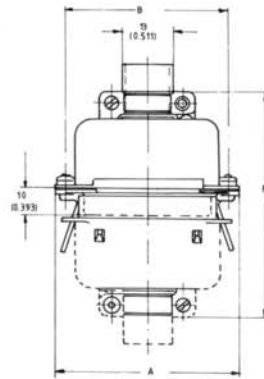
Male connector  
I-57-M



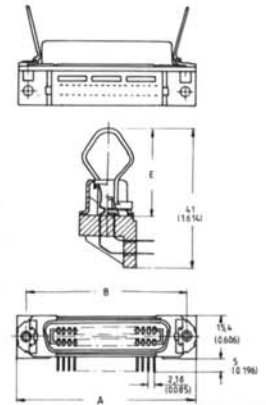
Female connector  
I-57-F



Female connector  
I-57-FB



Angled female connector  
I-57-AF



### DIMENSIONS

Series	No. of contacts	B	C	D
I-57-M	14	40	22	23
I-57-M	24	40	22	28
I-57-M	36	41	23	32
I-57-M	50	44	25	35

Series	No. of contacts	B	C	E
I-57-F	14	36	23	24
I-57-F	24	47	34	25
I-57-F	36	60	46	26
I-57-F	50	75	62	27

Series	No. of contacts	A	B	F
I-57-14-FB	14	44	36	24
I-57-24-FB	24	55	47	25
I-57-36-FB	36	68	60	26
I-57-50-FB	50	83	75	27

Series	No. of contacts	A	B	E
I-57-AF/M	14	44	36	24
I-57-AF/M	24	55	47	25
I-57-AF/M	36	68	60	26
I-57-AF/M	50	83	75	27

### ORDERING INFORMATION

Follow the sequence listed below to select the desired part number.

Example: I-57 36-M is a centronics connector with 36 contacts, male version.

Series	No. of contacts	Connector type
<b>I-57</b>	<b>36</b>	<b>M</b>
I-57	14	M
	24	Male connector
	36	F
	50	Female connector

Series	No. of contacts	Connector type
<b>I-57</b>	<b>36</b>	<b>FB</b>
I-57	14	FB
	24	Female connector
	36	
	50	

Series	No. of contacts	Connector type
<b>I-57</b>	<b>36</b>	<b>AF</b>
I-57	14	AF
	24	Angled female connector
	36	
	50	

**AM**  
Angled male connector