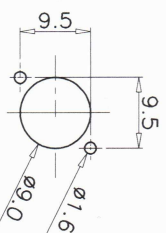
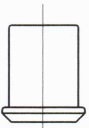
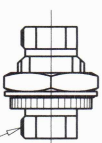
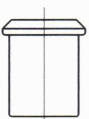
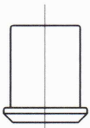
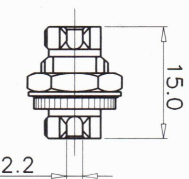
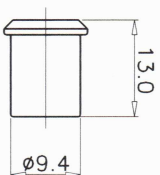
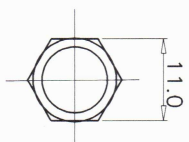


SCALE 1/1



SUGGESTED PANEL CUTOUT



Specification :

Material :

1. FC Dust Cover : PVC, Black color.
2. FC Body : Brass, Nickel Plated.
3. Washer : Steel, Nickel Plated.
4. Nut : Brass, Nickel Plated.
5. Holder : Brass, Nickel Plated.

Adaptor Type :

- a. FC Adaptor D Type, Singlemode.
- b. Sleeve : Zirconia.
- c. Operation Temperature : -20°C to +70°C.
- d. Durability : 500 cycles.
- e. Tensile Strength : 10 kgf.
- f. Insertion Loss : <0.2 dB.

GENERAL TOLERANCE OF DIMENSIONS	+	-
X.XXXX	+/-0.005	
X.XX	+/-0.05	
XX	+/-0.1	

DRAWING CHECK	20.MAY.2005	Michelle
APPROVAL	20.MAY.2005	YTY
DATE	UNIT	NAME
SCALE	I/1 (A4)	mm

**meditronik**®

ITEM NO.: FIBER FC-FC I SM D-TYPE

DES.: FC/PC Adaptor - D Type SM

DRAWING NO. FIBER FC-FC I SM D-TYPE

DRAWING CLASSIFICATION S SHEET 1 OF 1

