

Roller Head Ball and Socket Coupling Shaft Coupling



Z 301

Ball coupling avoids side loads. For use with transducers series LWH.



Z 50

Roller head to be used with transducers series TR/TRS and inductive precision sensor FTI. Hardened steel roll.



Z 60

Ball and socket coupling to be used with transducers series LWH.



Z 103 G 2.5

Z 103 G 3

Fork coupling with low backlash for shaft diameters 2.5 mm or 3 mm. Stainless steel, ground driving pin. Mounting with 1 fillister head screw M 2 each with hexagon socket. Allen key size 1.5 is supplied.



Z 104 G 6

Fork coupling with low backlash for shaft diameter 6 mm. Stainless steel, ground driving pin. Mounting with 1 fillister head screw M 3 each with hexagon socket. Allen key size 1.5 is supplied.



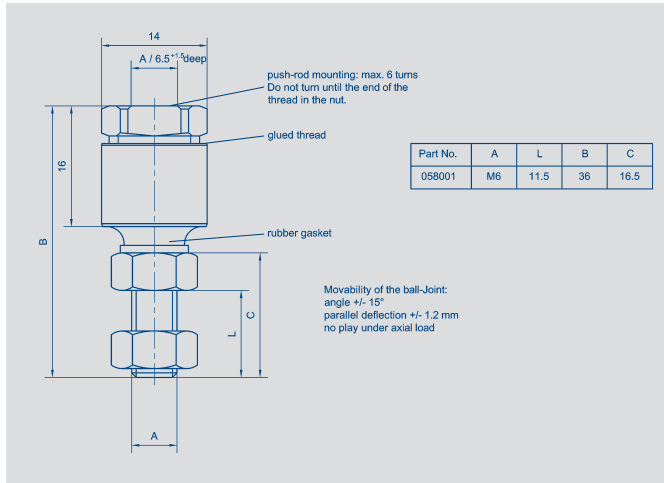
Z 105 G 6

Backlash-free fork coupling for shaft diameter 6 mm. Black anodized aluminium, driving pin and spring hardened. Clamp mounting with 1 fillister head screw M 3 each with hexagon socket. Maximum torque 5 Ncm. Allen key size 2.5 is supplied.



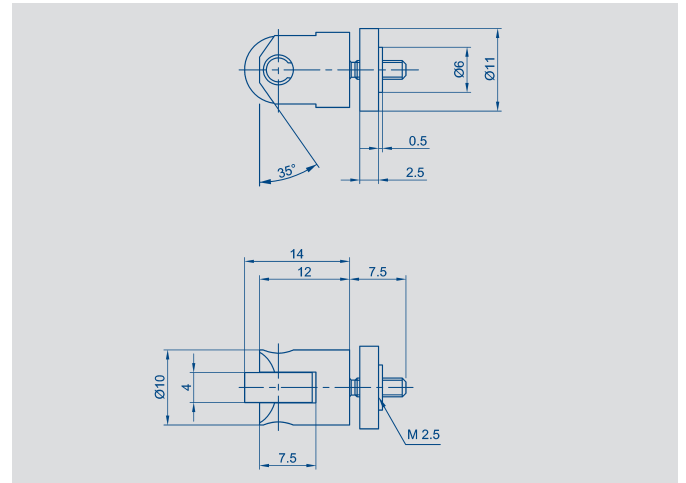
Z 110 G 10

Backlash-free coupling for shaft diameter 10 mm. Black anodized aluminium, driving pin and spring in phosphor bronze. Mounting with 2 threaded pins m 4 each with hexagon socket. Maximum torque 25 Ncm.



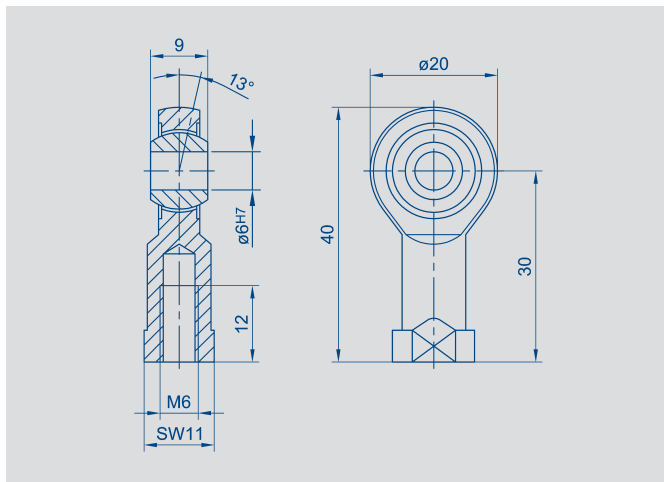
Type

Z 301



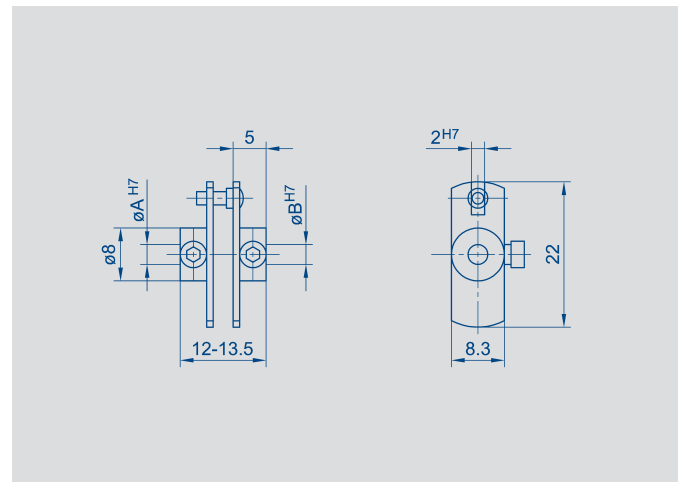
Type

Z 50



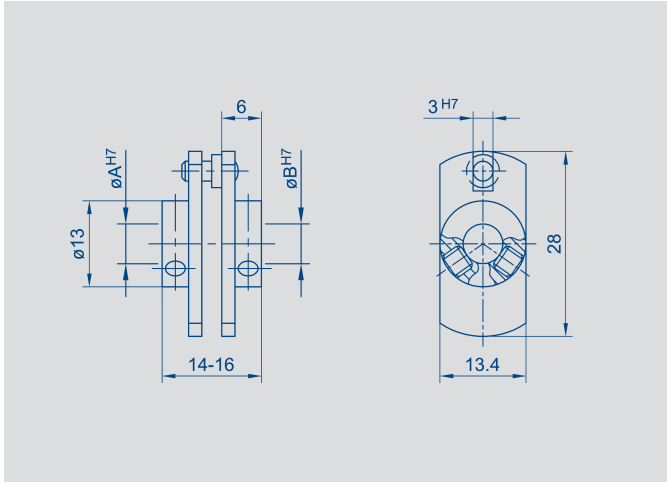
Type

Z 60

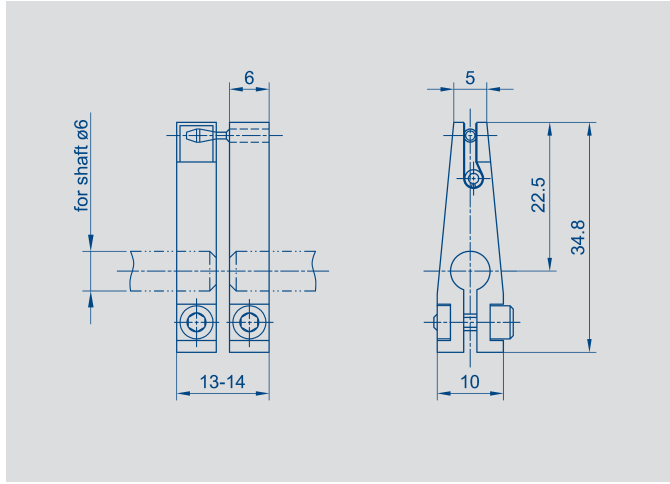


Type

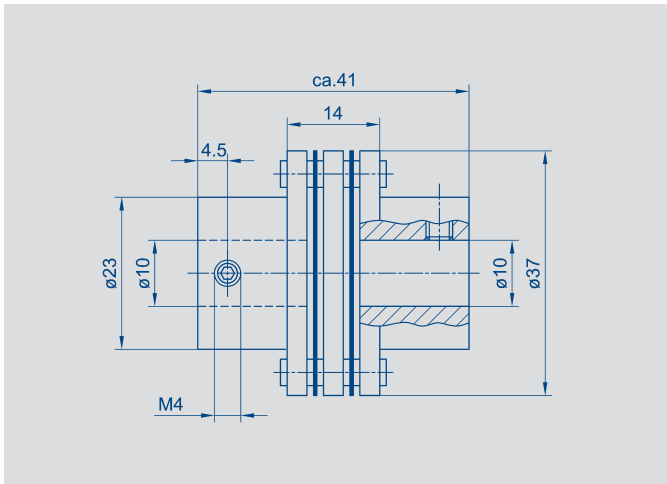
| Type | ϕA | ϕB |
|------------|----------|----------|
| Z103 G 2,5 | 2,5 | 2,5 |
| Z103 G 3 | 3 | 3 |



| Type | ϕA | ϕB |
|----------|----------|----------|
| Z104 G 6 | 6 | 6 |



| Type |
|----------|
| Z105 G 6 |



| Type |
|-----------|
| Z110 G 10 |

| Order designations | |
|--------------------|----------|
| Type | Art.-No. |
| Z 301 | T. folgt |
| Z 50 | 005678 |
| Z 60 | 058100 |
| Z103 G 2,5 | 005684 |
| Z103 G 3 | 005687 |
| Z104 G 6 | 005690 |
| Z105 G 6 | 005691 |
| Z110 G 10 | 005692 |