

Features

- Carbon element
- Insulated shaft
- Snap-in clip
- Center detent option

Applications

- Audio/TV sets
- Car radio
- Amplifiers/mixers/drum machines/synthesizers
- PCs/monitors
- Appliances

PTV09 Series - 9mm Potentiometer

Electrical Characteristics

TaperA, B
 Standard Resistance Range1K ohms to 1M ohms
 Standard Resistance Tolerance±20%
 Standard Nominal Resistance ValueSee standard resistance table
 Residual Resistance500 ohms maximum or ±1%

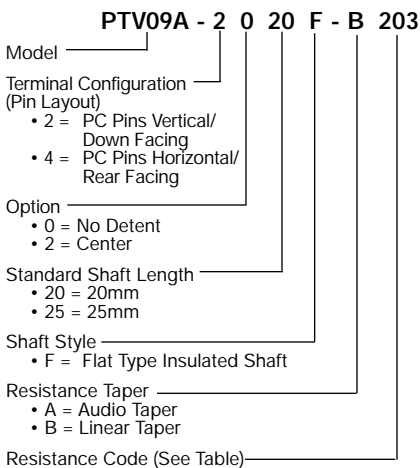
Environmental Characteristics

Power Rating0.05 watt
 Maximum Operating Voltage20 VDC, 50 VAC
 Sliding Noise100mV maximum

Physical Characteristics

Mechanical Angle280° ±5°
 Rotational Torque.....10 to 100 gcm
 Click Torque40 to 200 gcm
 Stop- End Strength3 kgcm minimum
 Rotational Life10,000 cycles minimum
 Soldering Condition300°C max.
 within 3 seconds

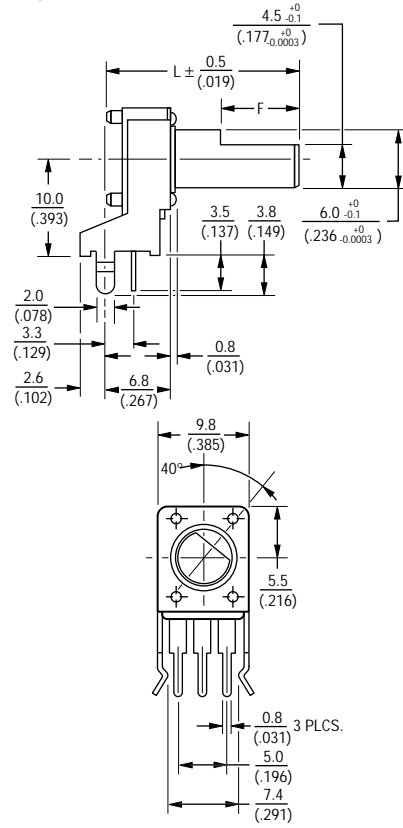
How To Order



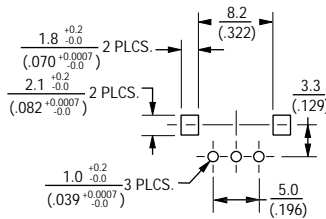
Other styles available.

Product Dimensions

PTV09A-2



RECOMMENDED PCB LAYOUT



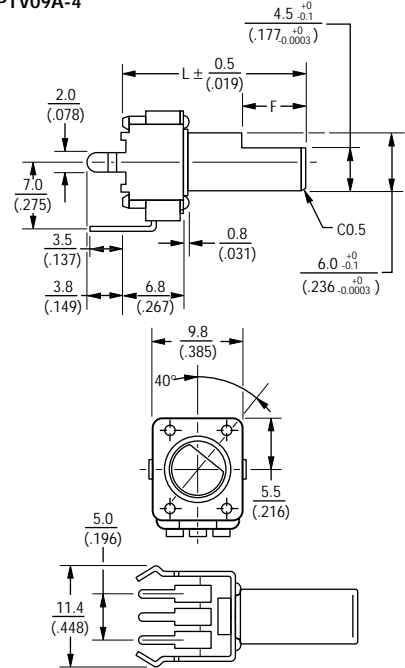
SHAFT SHOWN IN CCW POSITION

PTV09 Dimensions

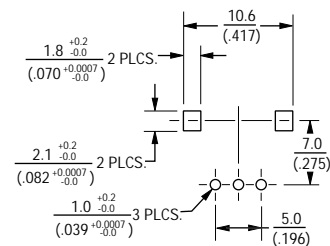
L	20	25
	(.787)	(.984)
F	7	12
	(.275)	(.472)

DIMENSIONS ARE: METRIC (INCHES)

PTV09A-4



RECOMMENDED PCB LAYOUT



Standard Resistance Table

Resistance (Ohms)	Resistance Code
1,000	102
2,000	202
5,000	502
10,000	103
20,000	203
50,000	503
100,000	104
200,000	204
500,000	504
1,000,000	105