

Features

- Carbon element
- Metal housing
- 15-60mm travel
- Single and dual gang
- Center detent option
- Dust cover option

Applications

- Audio/TV sets
- Car radio
- Amplifiers/mixers/drum machines/synthesizers
- PCs/monitors
- Appliances

PTA Series - Low Profile Slide Potentiometer

Electrical Characteristics

TaperA, B
 Standard Resistance Range
1K ohms to 1M ohms
 Standard Nominal Resistance Value
See standard resistance table
 Standard Resistance Tolerance±20%
 Residual Resistance
500 ohms maximum or 1%
 Insulation Resistance
Min. 100 megohms at 250V DC

Environmental Characteristics

Power Rating, B Taper
 15mm0.05W (0.025W Dual Gang)
 20mm0.1W (0.05W)
 30mm0.2W (0.1W)
 45mm0.25W (0.125W)
 60mm0.25W (0.125W)

Power Rating, A Taper
 15mm0.025W (0.015W Dual Gang)
 20mm0.05W (0.025W)
 30mm0.1W (0.05W)
 45mm0.125W (0.06W)
 60mm0.125W (0.06W)

Rated Voltage, B Taper
 15mm100V DC
 20-60mm200V DC

Rated Voltage, A Taper
 15mm50V DC
 20-60mm150V DC

Withstand Voltage, A Taper1 Min.
 at 300V AC

Tracking Error3 dB at -40 to 0 dB

Sliding Noise100mV maximum

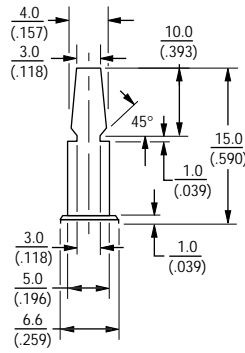
Physical Characteristics

Travel15, 20, 30, 45, 60mm
 Operating Force30 to 250 gcm
 Lever Stop Strength5 kgcm min.
 Rotational Life15,000 cycles minimum
 Soldering Condition300°C max.
 within 3 seconds

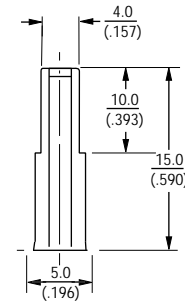
Lever Style & Product Dimensions

Actuator Styles

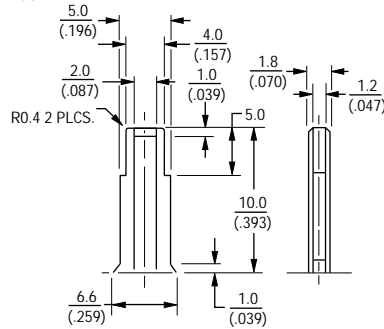
DP METAL LEVER



CP METAL LEVER



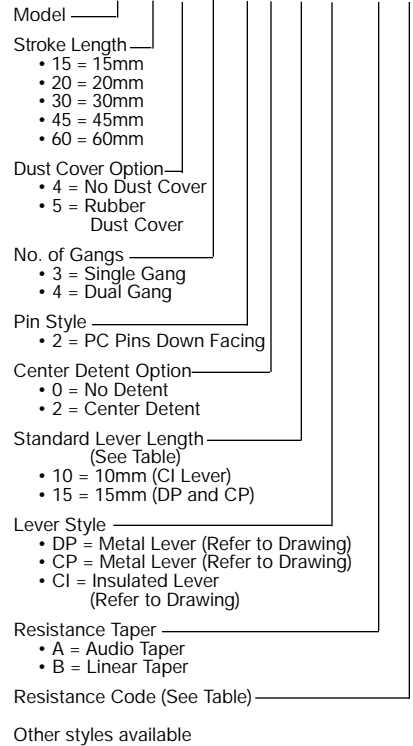
CI INSULATED LEVER



DIMENSIONS ARE: METRIC
 (INCHES)

How To Order

PTA 15 4 3 - 2 0 10 DP - B 203



Standard Resistance Table

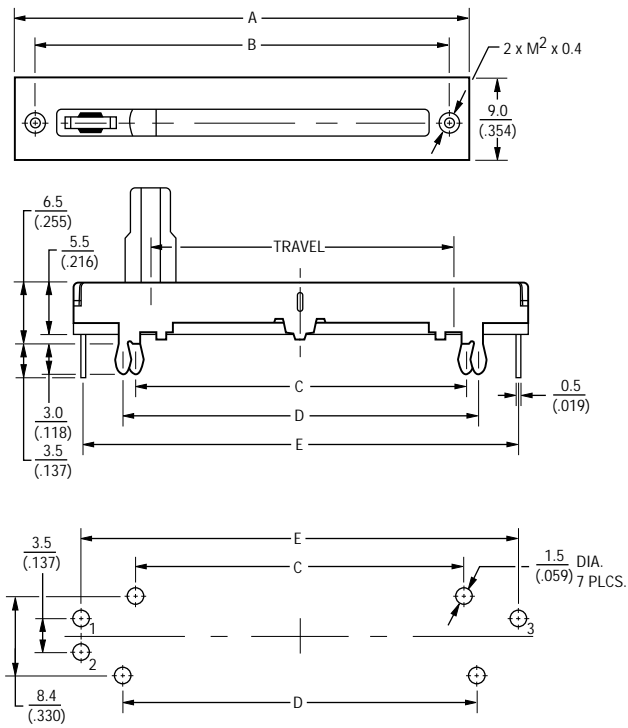
Resistance (Ohms)	Resistance Code
1,000	102
2,000	202
5,000	502
10,000	103
20,000	203
50,000	503
100,000	104
200,000	204
500,000	504
1,000,000	105

PTA Series - Low Profile Slide Potentiometer

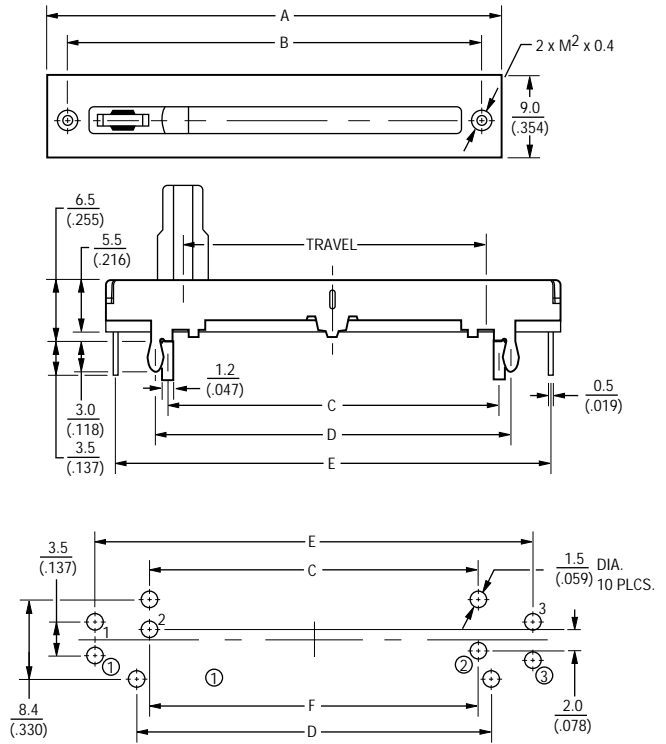


Product Dimensions

PTAxx43

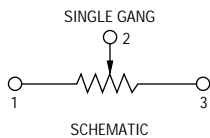


PTAxx44



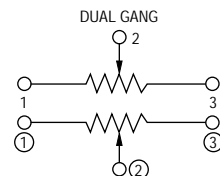
Single Gang Dimensions

Model	A	B	C	D	E	Travel
PTA1543	30 (.318)	26 (1.02)	17.8 (.700)	20.2 (.795)	28.5 (1.12)	15mm (.59)
PTA2043	35 (1.37)	31 (1.22)	22.8 (.897)	25.2 (.992)	33.5 (1.31)	20mm (.787)
PTA3043	45 (1.77)	41 (1.61)	32.8 (1.29)	35.2 (1.38)	43.5 (1.71)	30mm (1.18)
PTA4543	60 (2.36)	56 (2.20)	47.8 (1.88)	50.2 (1.97)	58.5 (2.30)	45mm (1.77)
PTA6043	75 (2.95)	71 (2.79)	62.8 (2.47)	65.2 (2.56)	73.5 (2.89)	60mm (2.36)



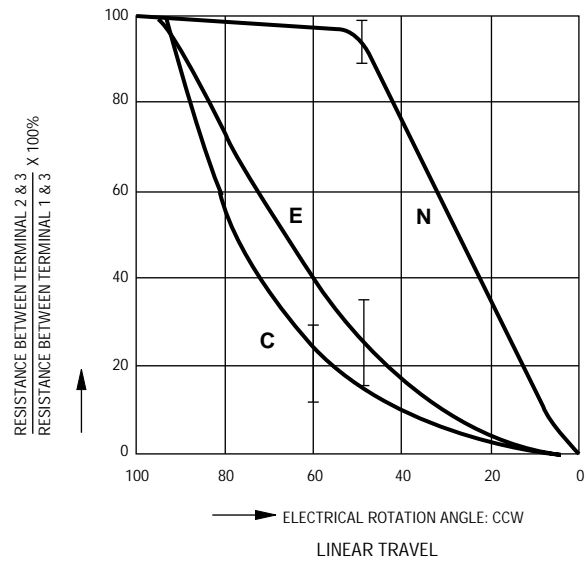
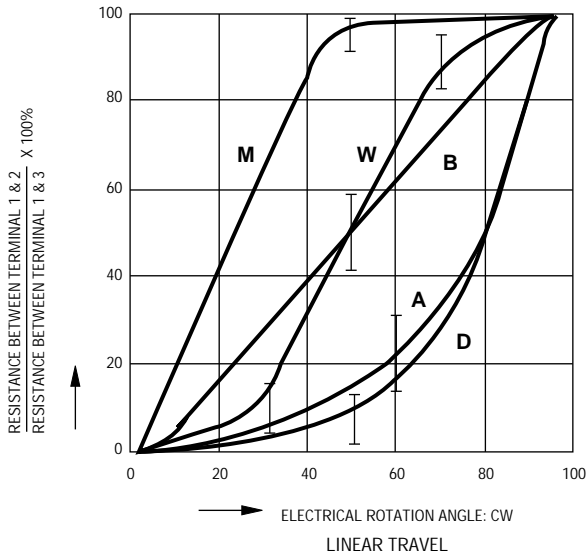
Dual Gang Dimensions

Model	A	B	C	D	E	F	Travel
PTA1544	30 (3.18)	26 (1.02)	17.8 (.700)	20.2 (.795)	28.5 (1.12)	18 (.708)	15mm (.59)
PTA2044	35 (1.37)	31 (1.22)	22.8 (.897)	25.2 (.992)	33.5 (1.31)	23 (.905)	20mm (.787)
PTA3044	45 (1.77)	41 (1.61)	32.8 (1.29)	35.2 (1.38)	43.5 (1.71)	33 (1.29)	30mm (1.18)
PTA4544	60 (2.36)	56 (2.20)	47.8 (1.88)	50.2 (1.97)	58.5 (2.30)	48 (1.88)	45mm (1.77)
PTA6044	75 (2.95)	71 (2.79)	62.8 (2.47)	65.2 (2.56)	73.5 (2.89)	63 (2.48)	60mm (2.36)

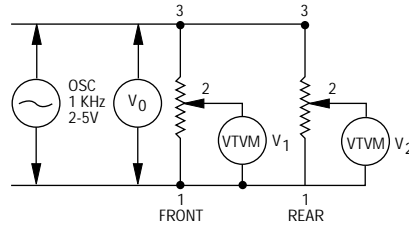


Taper Characteristics

BOURNS®



TEST METHOD



$$\text{GANG ERROR: } 20 \text{ LOG } \frac{V_2}{V_1} \text{ (dB)}$$

$$\text{ATTENUATION: } 20 \text{ LOG } \frac{V_1 \text{ OR } V_2}{V_0} \text{ (dB)}$$