

200FCA

Nomenclature

S **200** **FCA** - **1** **0** **A** - **0000**

● **S**
S means special mechanical specifications not applicable to our standard.

● **200**
200 means approx. size of base housing in mm.

● **FCA**
FC means Foot Controller,
A means long pedal type.

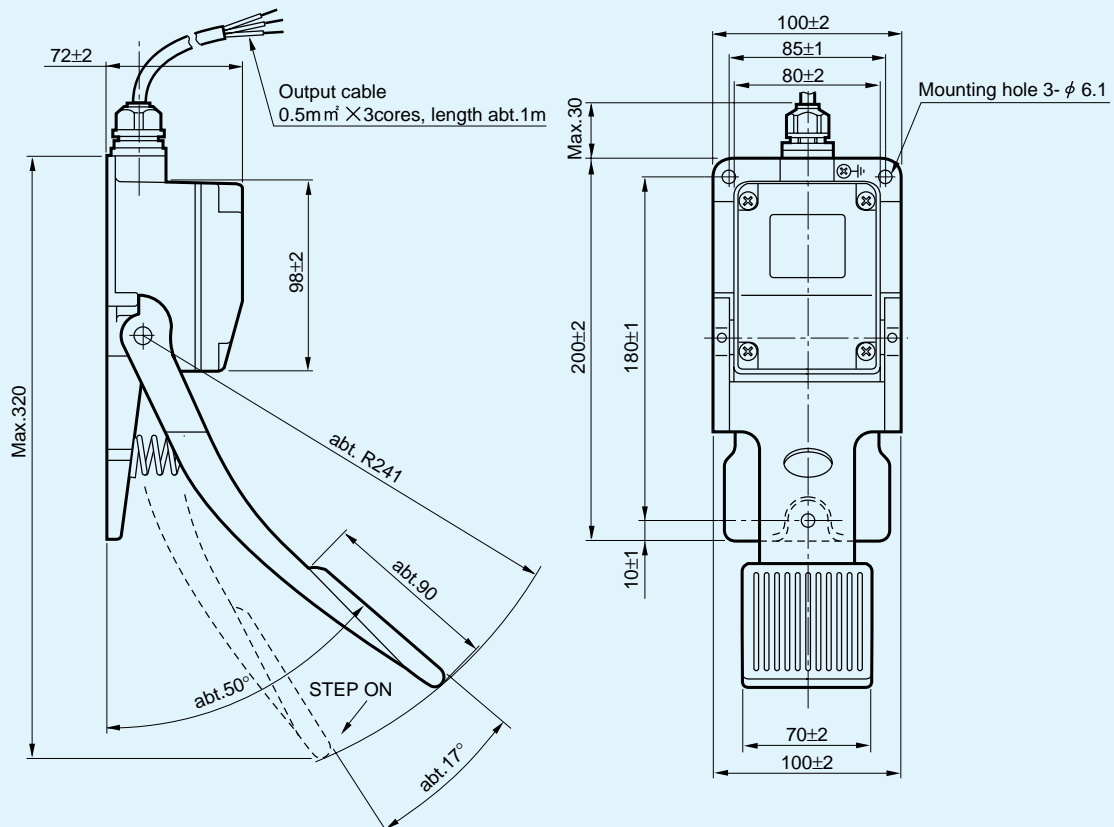
● **0000**
Special branch number basing on customer's special requirements with 4 digits number.

● **0 ①** **Number of switches to be mounted (Option).**
0--No switch mounted.
1--1 switch mounted.
2--2 switches mounted.

● **A ②** **Rating of switch :** A. B. C. ---Code-switch
D. E. F. ---Micro-switch
(For details, please refer to page 56)
G---other switch

● **1** **Number of potentiometers to be mounted**
0--No potentiometer mounted.
1--1 potentiometer mounted.
2--2 potentiometers mounted (Option).

Standard Dimensions



(Unit : mm)



200FCA-10
(standard)

STANDARD SPECIFICATIONS

● Mechanical Performances

Operating method : Stepping pedal type

Operating angle : Approx. 17°

Operating force : With standard automatically spring return device

Abt. 10N~22N (Abt. 1,000gf.~2,200gf.)

Operating temperature range : -20°C ~ +65°C

Vibration : 10~55Hz 98m/s² (10G)

Shock : 294m/s² (30G)

Life expectancy : Approx. 2,000,000 operations

Mass : Approx. 1.2kg

● Electrical Performances

Potentiometer mounted :

SFCP22E, 10kΩ ±20%, 0.3W, independent linearity tolerance±3% (conductive plastic resistance element)

Electrical rotating angle : Approx. 70°

Output smoothness : Below 0.2% against input voltage

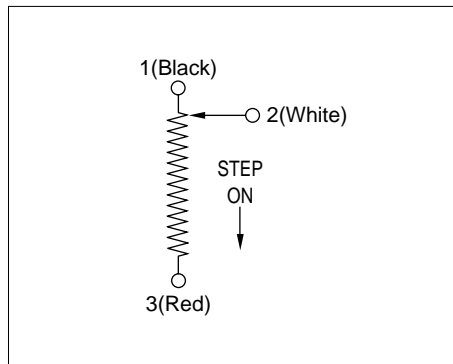
Contact resistance variation : Below 5% C.R.V.

Resolution : Essentially infinite

Dielectric strength : 1 minute at 500V A.C.

Insulation resistance : Over 1,000MΩ at 500V D. C.

● Terminal Connection Diagram



● Special Specifications Available

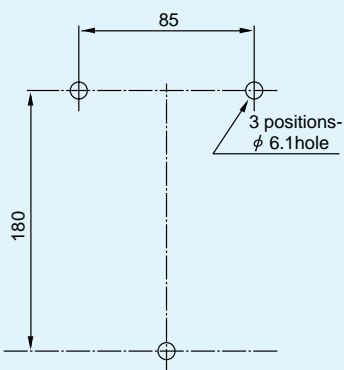
-With switch mounted :

For rating of switch, please see page 56. If you require the unit with one switch mounted, unless otherwise specified, we supply the unit with A version switch (code-switch with "ON" operation at about 3° from the beginning of stepping).

(Model S200FCA-11A)

- IP65 sealing
- 2 ganged potentiometer.
- Special resistance value on potentiometer.
- An intermediate tap on potentiometer.

■ Panel Arrangements



● Angle of Stepping

